

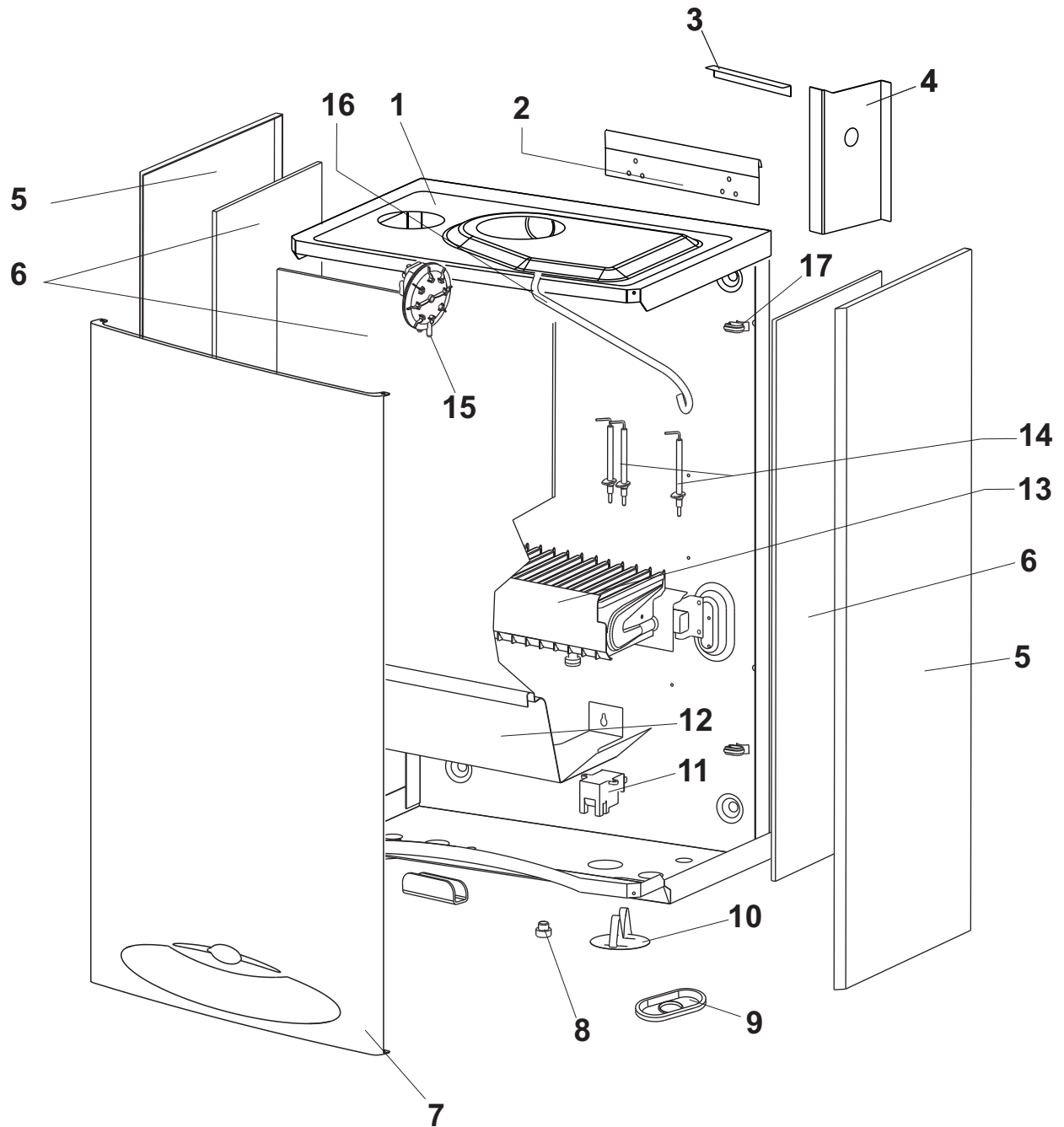
SPARE PARTS LIST

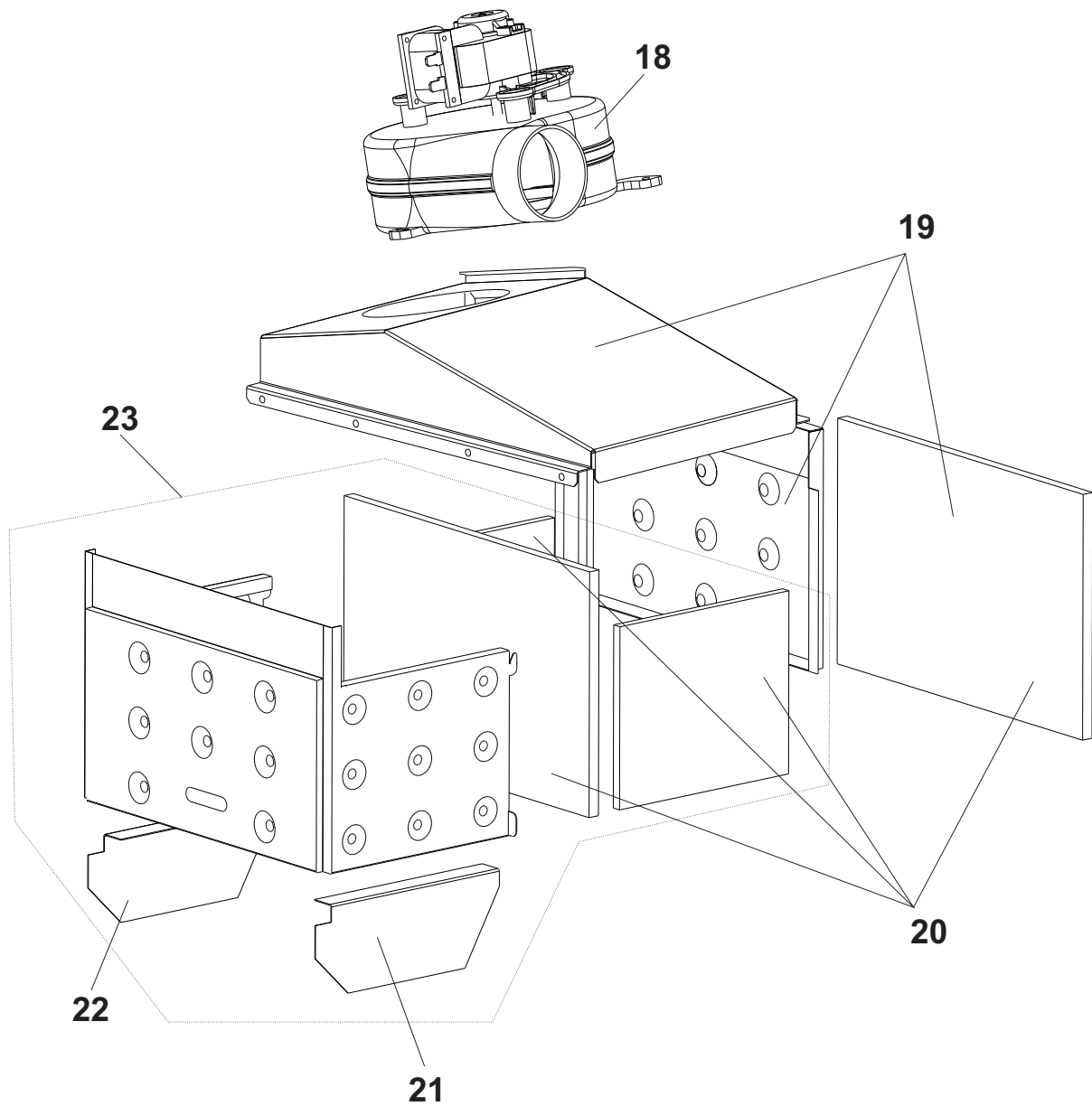
fondital

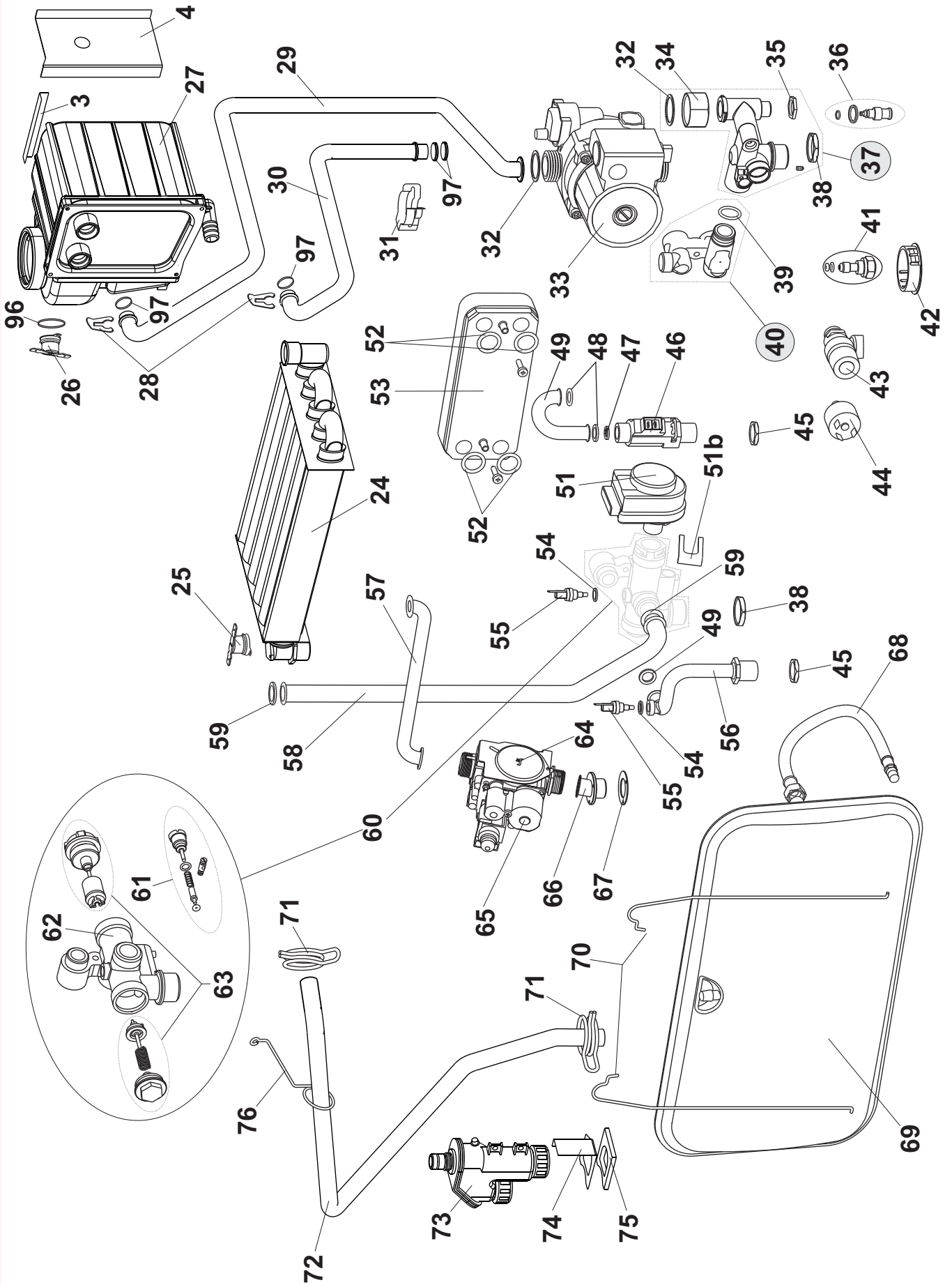
Tahiti Dual HC-HR 24-32

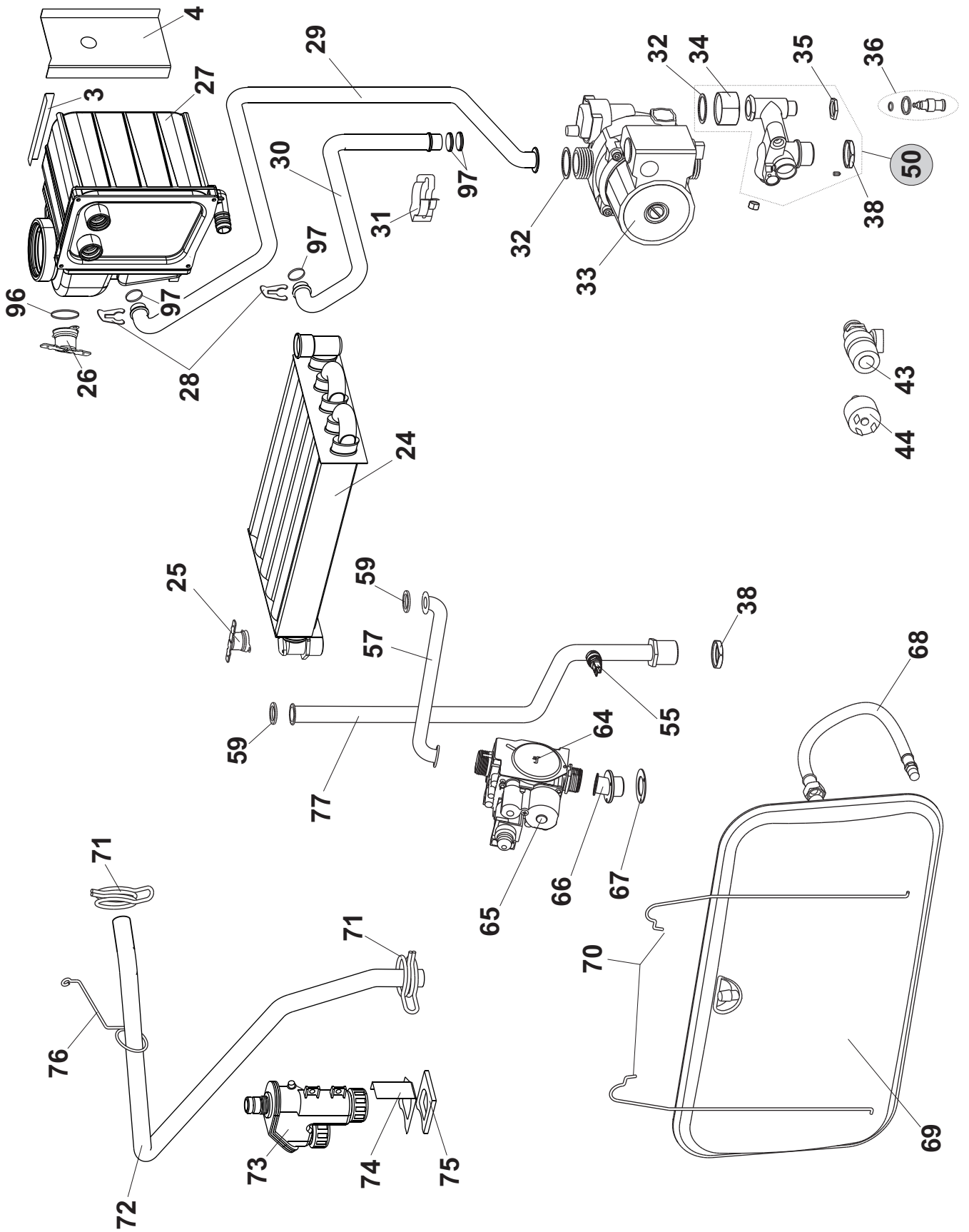
Line

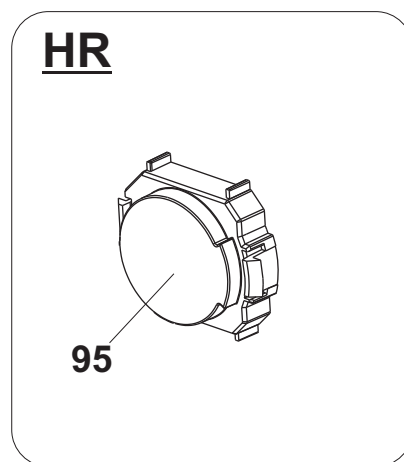
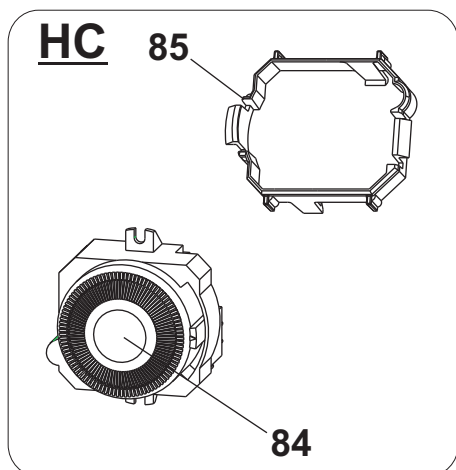
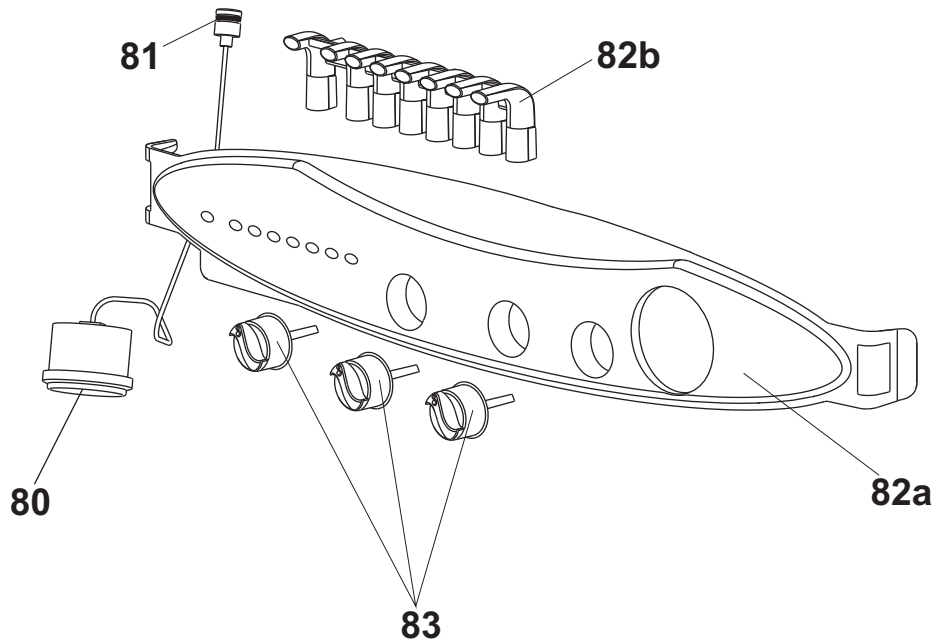
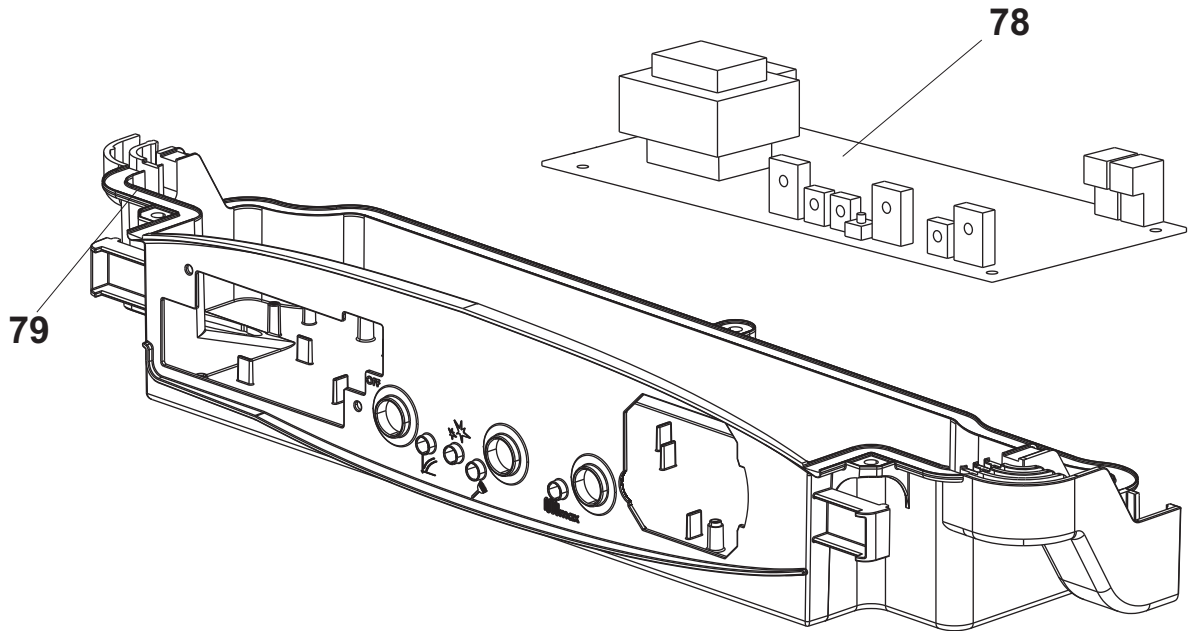


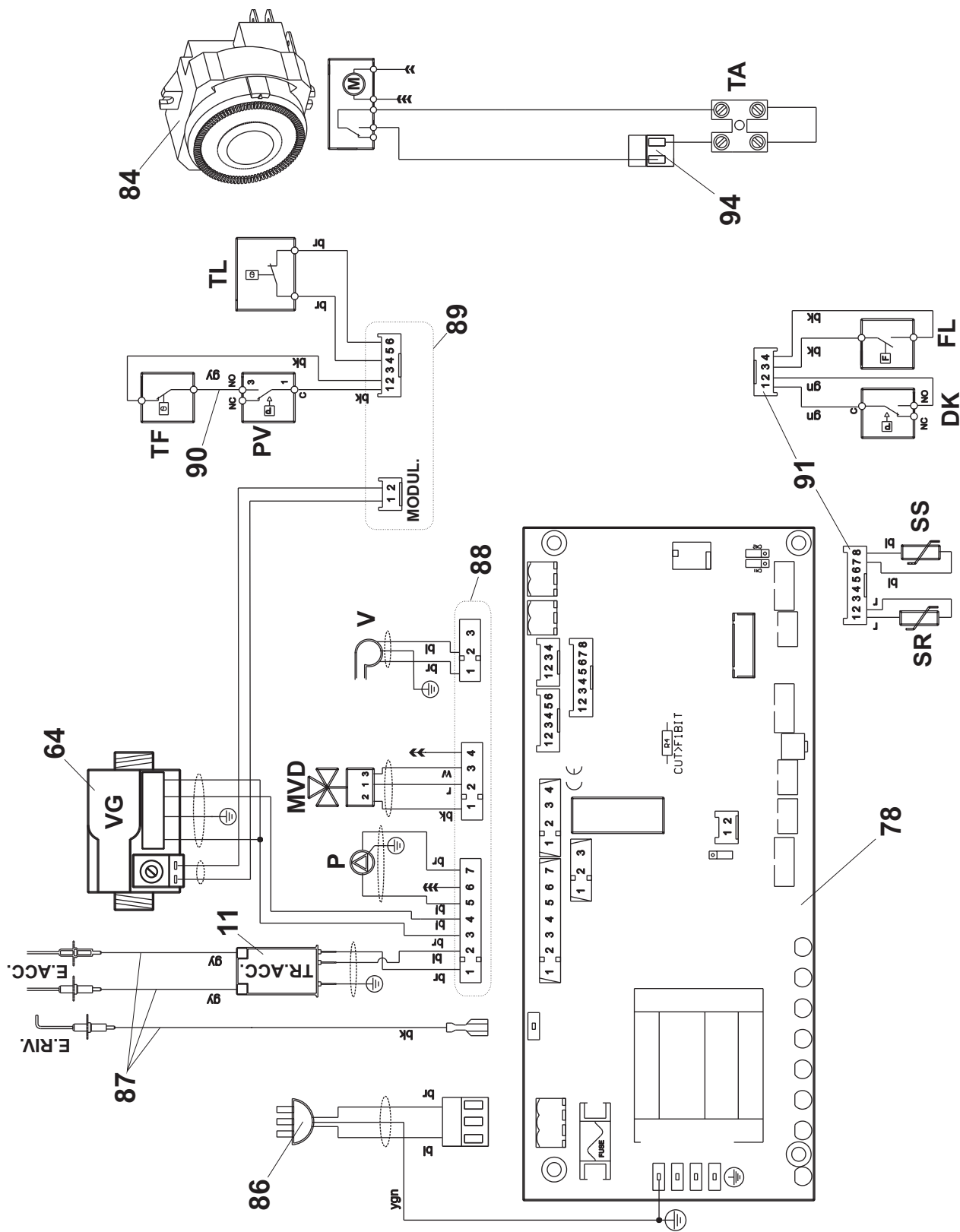


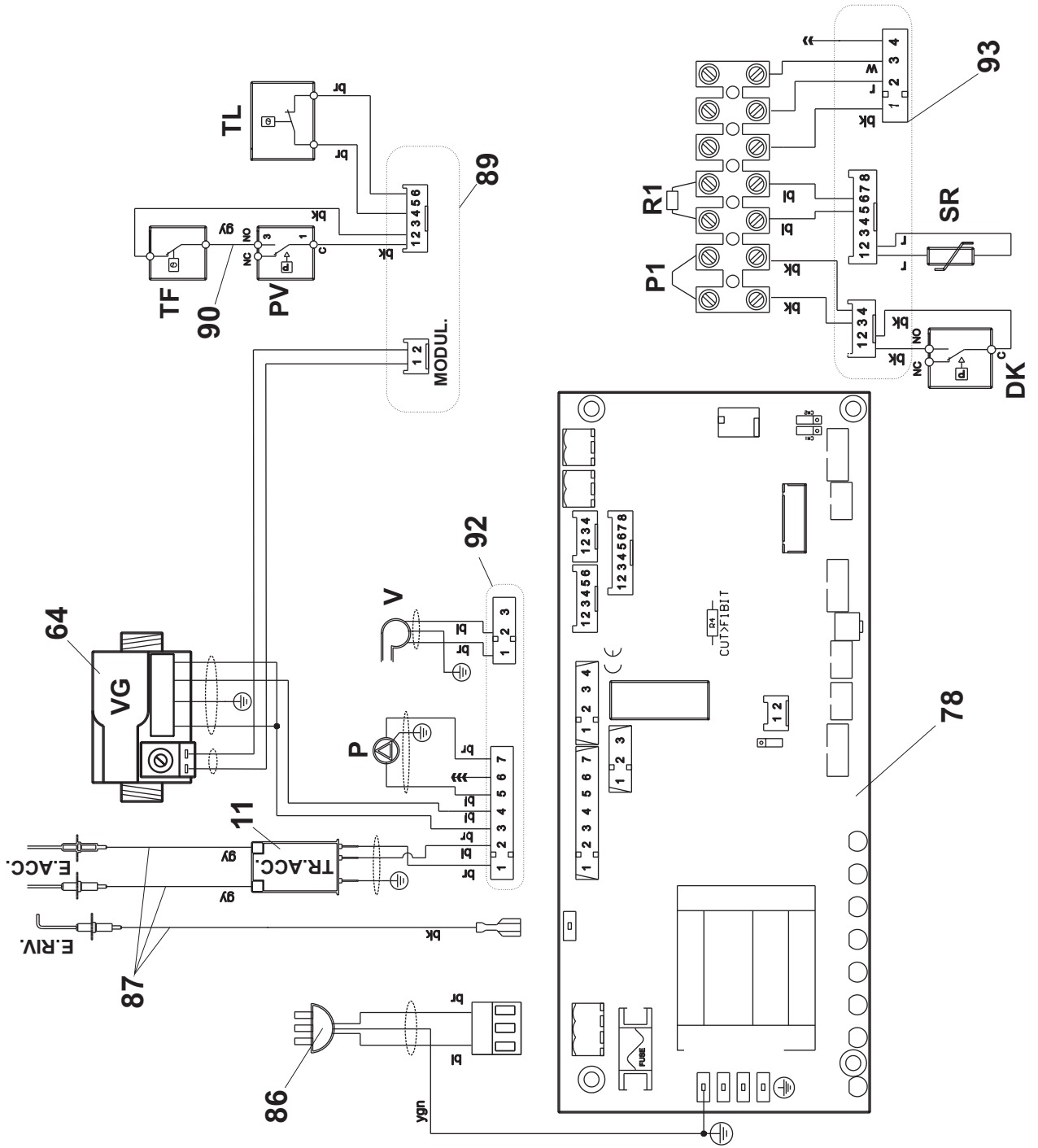












Tahiti Dual HC-HR 24-32 Line

Item	Code	No. of pieces per pack	Description
1	6TETFOND00	1	Wall-hung boiler top panel
2	6STASOST02	1	Hooking bracket for wall installation
3	6STAFREC01	1	Flue gas recover front bracket
4	6STAFREC00	1	Flue gas recover bracket
5	6PANLACM00	1	Wall-hung boiler side panel
6	6ISOLRIC00	1	Compleat panel insulation
7	6PANFRM06	1	Dual Line front panel
8	6WTAPFUM01	3	d 12 mm sealing cap
9	6GUARPAS03	1	Fairlead gasket
10	6Y41374800	3	Fitting Cap For Wall-Hung Boiler
11	6YTRAACC00	1	Ignition Transformer
12	6LAMIAANT00	1	Anti-radiation plate for wall-hung boilers
13	6BRUMMET03	1	Methane12-ramp gas burner 24
	6BRUMGPL03	1	LPG 12-ramp gas burner 24
	6BRUMMET11	1	Methane15-ramp gas burner 32
	6BRUMGPL11	1	LPG 15-ramp gas burner 32
	0TRASMET04	12	Methane conversion kit dual HC-HR 24 line
	0TRASGPL03	12	LPG conversion kit dual HC-HR 24 line
	0TRASMET12	15	Methane conversion kit dual HC-HR 32 line
	0TRASGPL11	15	LPG conversion kit dual HC-HR 32 line
14	6CANDELA00	3	Igniter plug
15	6PRESSOS04	1	Air pressure switch 24
	6PRESSOS05	1	Air pressure switch 32
16	6YTUBCON02	1	Silicone pipe
17	6PASSACA03	3	Fairlead
18	6VENTILA15	1	Fan 24
	6VENTILA16	1	Fan 32
19	6CAPFURC01	1	Fume hood
20	6SETISRC00	1	Fume hood insulation
21	6DEFLEDX00	1	Right deflector
22	6DEFLESX00	1	Left deflector
23	6CAMCORC00	1	Combustion chamber for wall-hung boilers
24	6SCAMMON08	1	Heat exchanger HC
25	6YTERSIC00	3	Safety thermostat 95°C
26	6TERMSIC05	3	Safety thermostat 105°C
27	6RECUFUM00	1	Flue gas recoverer
28	6CLIPREC00	2	Clips for flue gas recoverer
29	6TUBINGR00	1	Flue gas recoverer input duct
30	6TUBUSCR00	1	Flue gas recoverer output duct
31	6CLIPCOR01	1	Push-in fitting clip
32	6GROMNIA04	10	Gasket 1" Omnia Tesnit BA-U 30x21x2

33	6CIRCOLA07	1	Circulating pump
34	6GIRELLO03	3	1"G Pump fitting collar
35	6Y41138700	3	Drain tap fixing nut
36	6RUBISCA01	1	Boiler drain cock unit
37	6GRIDRIR00	1	Hydraulic unit for heating return circuit
38	6GHIEROT01	3	3/4"G Ring nut
39	6ORRASCP00	10	Sealing O-Ring on heat exchanger connector
40	6GRURIRC00	1	Heat exchanger connector unit
41	6TAPRUCA00	1	Replacement Cap for Load Tap
42	6TAPRUCA01	1	Plug For Filling Tap
43	6VALSIBA11	1	3 bar safety valve
44	6PRESSAC00	1	Water pressure switch
45	6GHIEROT00	3	Ring nut G1/2
46	6FLUSSOS00	1	Flow meter switch
47	6REGOFLU00	1	Flow regulator
48	6GROMNIA02	10	Gasket 1/2" Omnia Tesnit BA-U 18,5X11X2
49	6TUBINAF01	1	Cold water input duct with connector
50	6GRUIDRB00	1	Boiler hydraulic unit
51	6PROATTT00	1	Actuator programmer
51b	6CLIFMEL00	3	Electric motor fixing clip
52	6ORSCAPI01	10	Plate heat exchanger o-ring seal WRAS
53	6SCAMP1A01	1	14 Plate heat exchanger for 24 kW
	6SCAMP1A05	1	22 Plate heat exchanger for 32 kW
54	6WRONDAL00	10	Alluminium washer
55	6SONDNTC01	3	NTC immersion probe 10 Kohm
56	6TUBUSAC00	1	Hot water output duct for DHW system
57	6TUBOGAS09	1	Gas duct
58	6TUBMAIM05	1	Delivery duct to the heating system HC
59	6GROMNIA03	10	Gasket 3/4" Omnia Tesnit BA-U 24X16X2
60	6CORPVAL01	1	Three-way valve unit
61	6BYPRIDU00	1	By-pass pipe
62	6CORTREV00	1	3-way motorized valve body
63	6OTTUPIA00	1	CH shutter and DHW plate
64	6VALVGAS11	1	Gas valve
65	6YBOBINA00	1	Gas valve coil
66	6CURFIVG00	1	Fixing bend for gas valve
67	6GUAVAGA01	1	Gas valve gasket
68	6TUBFLEX02	1	Hose
69	6VASOESP10	1	8-litre expansion vessel
70	6MOLSUVC00	2	Expansion vessel supporting spring
71	6FASCMOL00	1	Spring retainer diameter 24
72	6TUBOREC00	1	Condensate drain pipe of flue gas recoverer
73	6SIFRACO02	1	Condensate trap
74	6STAFSIF00	1	Condensate trap clump
75	6GUARSIF00	1	Condensate trap gasket
76	6FILOREC00	1	Support wire for condensate drain pipe
77	6TUBMAIM03	1	Delivery duct to the heating system HR

78	6SCHEMOD14	1	Modulation board
79	6SCAELPA02	1	Box for control panel housing
80	6MANOMET08	1	Pressure gauge
81	6ORINNMA00	10	Pressure gauge o-ring seal
82a	6FRONPAN19	1	Line instrument panel
82b	6GUIPPCM04	1	Boiler control panel light guide
83	6MANOPOL04	3	Knob
84	6TIMERGB00	1	Timer
85	6CORTIME00	1	Timer Fixing Frame
86	6CAVOALI00	1	Supply cable
87	6CABLMUR07	1	Ignition and detection electrode connection
88	6CABLMUR34	1	Pump-gas valve- fan - mvd connection HC
89	6CABLMUR33	1	Modulator-air pressure switch-safety thermostat conn.
90	6CABLMUR32	1	PV and TF connection
91	6CABLMUR14	1	Flow control-air pres.switch-ntc connection
92	6CABLMUR36	1	Pump-gas valve- fan connection HR
93	6CABLCON18	1	Plug Connection HR
94	6CABLCON12	1	Timer Connection
95	6TAPTIME00	1	Timer Plug
96	6ORRECFU00	10	Safety thermostat o-ring
97	6ORRECFU01	10	Connection flue gas recoverer o-ring

