

*CATALOGO*

*RICAMBI*

*BAI*

*Caldaie gamma LUNA HT RESIDENTIAL*





# LUNA HT RESIDENTIAL

HSB435533000 - LUNA HT1\_350 BAXI  
 HSB435533001 - LUNA HT 1\_350 BAXI  
 HSB435533002 - LUNA HT 1\_350 BAXI  
 HSB435533006 - LUNA HT 1\_350 BAXI  
 HSB435533007 - LUNA HT 1\_350 BAXI  
 HSB435533000-1-2-3-4-5 -LUNA1\_450  
 HSB435533006 - LUNA HT 1\_450  
 HSB435533007 - LUNA HT 1\_450  
 HSB435533006 - LUNA HT 1\_450  
 HSB435533007 - LUNA HT 1\_450  
 HSB435533000-1-2-3-4-5 -LUNA1\_550  
 HSB435533006 - LUNA HT 1\_550  
 HSB435533007 - LUNA HT 1\_550  
 HSB435533006 - LUNA HT 1\_550  
 HSB435533007 - LUNA HT 1\_550  
 HSB435533000-1-2-3-4-5 -LUNA1\_650  
 HSB435533006 - LUNA HT 1\_650  
 HSB435533007 - LUNA HT 1\_650  
 HSB435533006 - LUNA HT 1\_650  
 HSB435533007 - LUNA HT 1\_650  
 HSB435533000-1-2-3-4-5 -LUNA1\_850  
 HSB435533006 - LUNA HT 1\_850  
 HSB435533007 - LUNA HT 1\_850  
 HSB435533006 - LUNA HT 1\_850  
 HSB435533007 - LUNA HT 1\_850  
 HSB435533000-1-2-3-4-5 -LUNA1\_1000  
 HSB435533006 - LUNA HT 1\_1000  
 HSB435533007 - LUNA HT 1\_1000  
 HSB435533006 - LUNA HT 1\_1000  
 HSB435533007 - LUNA HT 1\_1000

POS.	Descrizione	Codice ricambio	HT	HT	HT	HT	HT	HT	HT	HT	HT	HT	HT	HT	HT	HT	HT	HT	HT	Matr. iniz.	Matr. fin.	Int.	Note
			1	1	2	1	1	2	1	1	2	3	3	4	5	6	7	8	9				
32	SCAMB.DUOZ 85kW C/SUPP.ANT.	626900																		B813			(22)
37	ASS.FRONTALE C.S.LUNA HT	5689660	•	•	•	•	•	•	•	•	•	•	•	•	•	•	•	•					
37	ASS.FRONTALE C.S.LUNA HT	5671130				•						•									B724		S
37	ASSIEME FRONTALE C.S.HT 85-100	5689670													•			•					
37	ASSIEME FRONTALE C.S.HT 85-100	5681680													•			•			B718		S
37	ASSIEME FRONTALE C.S.HT 85-100	5689670													•			•			B719		
37	ASS.FRONTALE C.S.LUNA HT	5689660				•						•								B725			
38	GUARNIZIONE PER VETRINO	5401610	•	•	•	•	•	•	•	•	•	•	•	•	•	•	•	•	•				
39	VETRINO ISPEZIONE FIAMMA	5203930	•	•	•	•	•	•	•	•	•	•	•	•	•	•	•	•	•				
40	CORNICE PER VETRINO C.S.	5103360	•	•	•	•	•	•	•	•	•	•	•	•	•	•	•	•	•				
40	CORNICE VETRINO VITI INC.	5115590													•	•	•	•	•				
41	BR.POWER HT 1.1200-1.1500	3621410															•	•	•				
41	BRUCIATORE 45KW LUNA HT	5670540	•	•	•	•	•	•	•	•	•	•	•	•	•	•	•	•	•				
41	BRUCIATORE 55KW LUNA HT	5670550								•	•	•											
41	BRUCIATORE 65KW LUNA HT	5670560									•	•	•										
44	ASS.SACCHETTO CAMBIO GAS (GPL)	620740													•	•	•	•	•				
44	ASS.SACCHETTO CAMBIO GAS N(G20)	624720													•	•	•	•	•				
46	ASS.TUBO GAS LUNA HT1.450	5670670	•	•	•	•	•	•	•	•	•	•	•	•	•	•	•	•	•				
46	ASS.TUBO GAS LUNA HT1.550	5670630								•	•	•											
46	ASS.TUBO GAS LUNA HT1.650	5670680									•	•	•										
46	TUBO VALV.GAS/VENTURI HT 100kW	5681570															•	•	•				
46	TUBO VALV.GAS/VENTURI HT 85kW	5681560															•	•	•				
49	TAPPO RACCORDO FUMI	5410880	•	•	•	•	•	•	•	•	•	•	•	•	•	•	•	•	•				
59	CAVO CANDELA ACCENSIONE	8510970	•	•	•	•	•	•	•	•	•	•	•	•	•	•	•	•	•				
59	CAVO CANDELA ACCENSIONE L=300	8512370															•	•	•	•			
62	PRESA DI PRESSIONE	5409570															•	•	•	•			
63	CANDELA ACCENSIONE	710220000			•					•					•				•				
63	CANDELA ACCENSIONE LUNA HT	8422830	•	•		•	•			•	•				•			•	•			C007	S
63	CANDELA ACCENSIONE	710220000	•	•		•	•			•	•				•			•	•		C008		
65	CANDELA RILEVAZIONE	710220700			•					•					•			•	•				
65	CANDELA RILEVAZIONE LUNA HT	8422840	•	•		•	•			•	•				•			•	•			C007	S
66	CANDELA RILEVAZIONE	710220700	•	•		•	•			•	•				•			•	•		C008		
71	GUARNIZIONE G1 GRAFITATA	3402290	•	•	•	•	•	•	•	•	•	•	•	•	•	•	•	•	•				
75	GUARNIZIONE PASSATUBO D.10	5409240	•	•	•	•	•	•	•	•	•	•	•	•	•	•	•	•	•				
87	ASS.TUBO RITORNO RISCALD.	5670590	•	•		•	•			•	•				•								
87	ASS.TUBO RITORNO RISCALD.	5704300			•					•					•								
87	TUBO R.R. HT 100 Kw	5704330																					
87	TUBO R.R. HT 100kW	5681600																	•				
87	TUBO R.R. HT 85 Kw	5704320																	•				
87	TUBO R.R. HT 85kW	5681590																	•				
91	RUBIN. OT. SCAR. CALD. 337221	5652030	•	•	•	•	•	•	•	•	•	•	•	•	•	•	•	•	•				
131	SONDA NTC MOD. S010057 HT	8434840				•				•											B615		S
131	SONDA NTC MOD.S010057 SMD	8435400	•	•	•					•					•			•	•				
131	SONDA NTC MOD.S010057 SMD	8435400																			B616		
132	GUARNIZIONE SONDA 10X14X1,5	5402830	•	•	•	•	•	•	•	•	•	•	•	•	•	•	•	•	•				
134	UGELLO DIAMETRO 15	5212750								•	•												
134	UGELLO DIAMETRO 8,5	5212740	•	•	•	•	•	•	•	•	•	•	•	•	•	•	•	•	•				
135	TERMOST.LIM.105°C C/FAST.PIEG.	9950760	•	•	•	•	•	•	•	•	•	•	•	•	•	•	•	•	•				
136	ASSIEME TUBO M.R. DUOZ	5670600	•	•	•	•	•	•	•	•	•	•	•	•	•	•	•	•	•				
136	TUBO M.R. HT 100kW	5681620																	•				
136	TUBO M.R. HT 85kW	5681610																	•				
137	BLOCCHETTO USCITA VALV. GAS	5211780	•	•	•	•	•	•	•	•	•	•	•	•	•	•	•	•	•				
138	ANELLO OR 22,22X2,62	5402010	•	•	•	•	•	•	•	•	•	•	•	•	•	•	•	•	•				
138	ANELLO OR 28,24X2,62	5400400																	•				

# LUNA HT RESIDENTIAL

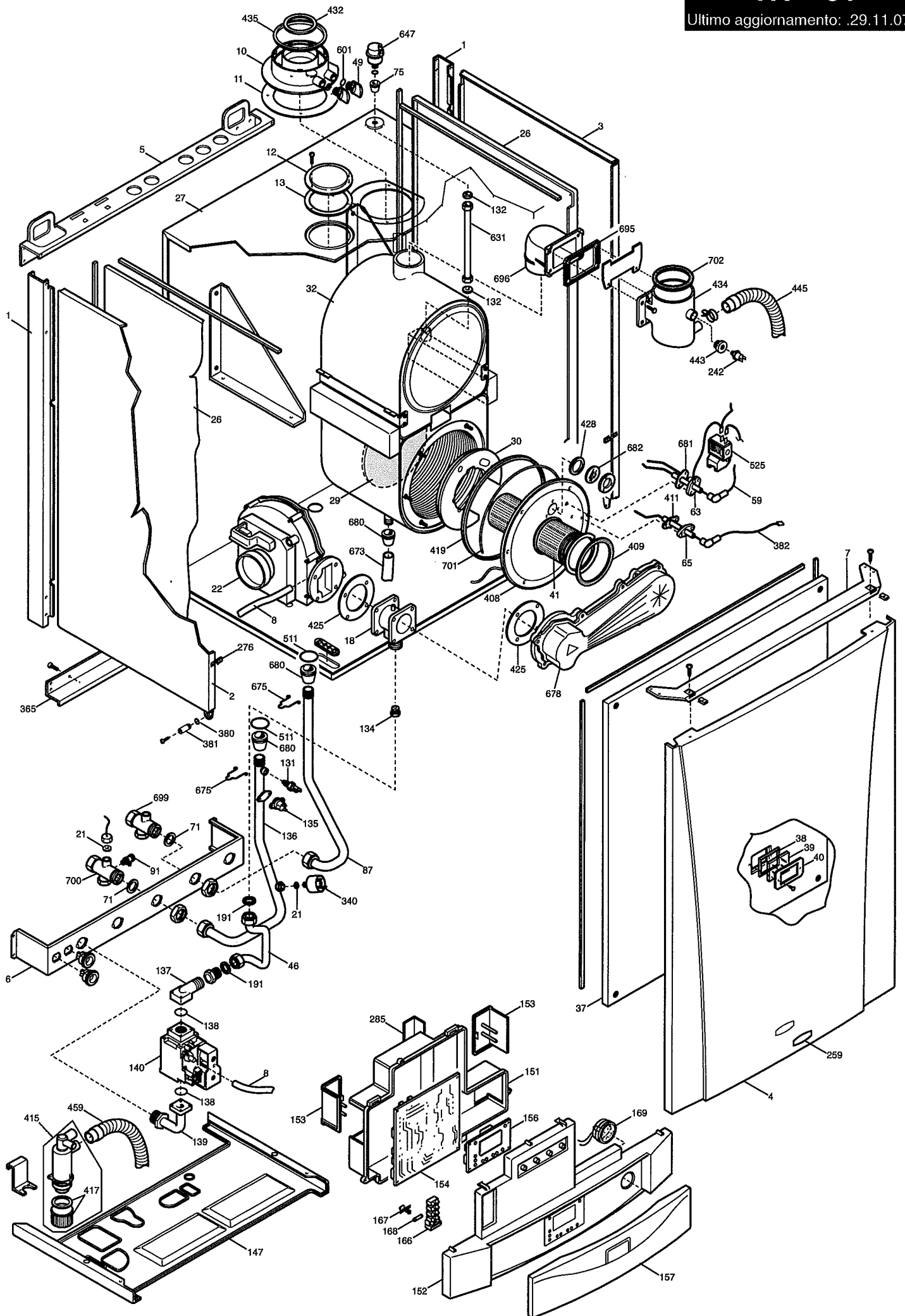
POS.	Descrizione	Codice ricambio	<div style="display: flex; justify-content: space-between; font-size: small; text-align: center;"> <span>HSB43533000 - LUNA HT 1.350 BAXI</span> <span>HSB43533001 - LUNA HT 1.350 BAXI</span> <span>HSB43533002 - LUNA HT 1.350 BAXI</span> <span>HSB435433000-1-2-3-4-5 - LUNA1.450 -BAXI-</span> <span>HSB435433006 - LUNA HT 1.450 -BAXI-</span> <span>HSB435533000-1-2-3-4-5 -LUNA1.450 -BAXI-</span> <span>HSB435533006 - LUNA HT 1.450 -BAXI-</span> <span>HSB435533007 - LUNA HT 1.450 -BAXI-</span> <span>HSB435633000-1-2-3-4-5 -LUNA1.550 -BAXI-</span> <span>HSB435633006 - LUNA HT 1.550 -BAXI-</span> <span>HSB435633007 - LUNA HT 1.550 -BAXI-</span> <span>HSB435085000-1 - LUNA HT 1.650 -BAXI-</span> <span>HSB435085002 - LUNA HT 1.650 -BAXI-</span> <span>HSB435700000 - LUNA HT 1.850 IT-AT-TR</span> <span>HSB435700001-2 - LUNA HT 1.850 IT-AT-TR</span> <span>HSB435700003 - LUNA HT 1.1000 IT-AT-TR</span> </div>																		HT 1	HT 1	HT 2	HT 1	HT 1	HT 2	HT 1	HT 1	HT 2	HT 3	HT 3	HT 4	HT 5	HT 6	HT 7	HT 8	HT 9	Matr. iniz.	Matr. fin.	int.	Note
			HT 1	HT 1	HT 2	HT 1	HT 1	HT 2	HT 3	HT 3	HT 4	HT 5	HT 6	HT 7	HT 8	HT 9																									
139	ASSIEME TUBO ENTRATA GAS	5670720	●	●	●	●	●	●	●	●	●	●	●	●	●	●	●	●																							
139	TUBO ENTRATA GAS LUNA HT85-100	3623710												●	●	●	●	●																							
140	VALV.GAS SIT 822 NOVAMIX	3621240												●	●	●	●	●																							
140	VALVOLA GAS SIT SIGMA 848	5670820	●	●	●	●	●	●	●	●	●	●	●	●	●	●	●	●																							
147	FONDO CALDAIA ACC.BIANCO	5116500	●	●	●		●	●		●	●		●	●																											
147	FONDO CALDAIA ACCUMULO	5109720				●			●			●									B642	S																			
147	TRAVERSA SPALLE HT85-100	3111170												●	●	●	●	●																							
147	FONDO CALDAIA ACC.BIANCO	5116500				●			●			●									B643																				
151	COPERCHIO COMANDI LUNA HT	5409590	●	●	●	●	●	●	●	●	●	●	●	●	●	●	●	●																							
152	CRUSC.SERIG.LUNA HT 1.350	5690710	●	●	●																																				
152	CRUSC.SERIG.LUNA HT 1.450	5670640				●	●	●																																	
152	CRUSC.SERIG.LUNA HT 1.550	5670650							●	●	●																														
152	CRUSC.SERIG.LUNA HT 1.650	5670660									●	●	●																												
152	CRUSCOTTO SERIGRAFATO HT 1.850	3623670											●	●																											
152	CRUSCOTTO SERIGRAFATO HT1.0000	3623680													●	●		●	●																						
153	COPERCHIO MORSETTIERA	5407660	●	●	●	●	●	●	●	●	●	●	●	●	●	●	●	●																							
154	GR.SC.LMU 54D C/IST.VG 2 SONDE	5704700			●			●			●			●																											
154	GR.SCHEDA LMU 54 C/ISTR-VG SIT	5677340			●			●			●										B603	S																			
154	GR.SCHEDA LMU 54 D C/ISTR-V.G.	5680190	●	●			●			●				●							B613	S																			
154	GR.SCHEDA LMU 54 D C/ISTR-V.G.	5680190												●		●																									
154	GR.SCHEDA.LMU54D C/ISTR.TS2,5	3624770														●																									
154	SCHEDA SIEMENS LMU 54	5670820				●			●			●										S																			
154	GR.SCHEDA LMU 54 D C/ISTR-V.G.	5680190				●			●			●									B604																				
154	GR.SCHEDA.LMU54D C/ISTR.TS2,5	3624770												●		●					B614																				
156	SC. DISPLAY SIEM. (Agu2.310)	5669090	●	●	●	●	●	●	●	●	●	●	●	●	●	●	●	●																							
157	ASSIEME ANTINA NUVOLA HT	5666800	●	●	●	●	●	●	●	●	●	●	●	●	●	●	●	●																							
166	MORSETTIERA 5P C/PORTAFUSIBILE	8421590	●	●	●	●	●	●	●	●	●	●	●	●	●	●	●	●																							
167	PORTAFUSIBILE LUNA	5405340	●	●	●	●	●	●	●	●	●	●	●	●	●	●	●	●																							
168	FUSIBILE 3,15A 250V	8422730	●	●	●	●	●	●	●	●	●	●	●	●	●	●	●	●																							
169	ASS.MANOMETRO C/SUPPORTO	9951020	●			●			●			●			●							S																			
169	ASS.MANOMETRO/PORTAMANOMET	9951830	●	●	●	●	●	●	●	●	●	●	●	●	●	●	●	●																							
191	GUARNIZIONE G1/2 AFM 34	5408970	●	●	●	●	●	●	●	●	●	●	●	●	●	●	●	●																							
242	TERMOSTATO SICUR.M4 75°RM	8434830	●	●	●	●	●	●	●	●	●	●	●	●	●	●	●	●																							
242	TERMOSTATO SICUR.M4 85°RM	8435330												●	●	●	●	●																							
259	MARCHIO BAXI	5657100	●	●	●	●	●	●	●	●	●	●	●	●	●	●	●	●																							
276	PRESTOLINA X AUTOF. 8P (4,2)	1340440	●	●	●	●	●	●	●	●	●	●	●	●	●	●	●	●																							
285	COPERCHIO MORSETTIERA B.T.	5409600	●	●	●	●	●	●	●	●	●	●	●	●	●	●	●	●																							
323	RACCORDO VENTURI HT 85-100	5213770												●	●	●	●	●																							
340	PRESSOSTATO RISCALDAMENTO	9951690	●	●	●		●	●		●	●		●	●	●	●	●	●																							
340	PRESSOSTATO RISCALDAMENTO	5663750				●			●			●			●		●	●			B706	S																			
340	PRESSOSTATO RISCALDAMENTO	9951690				●			●			●			●		●	●			B707																				
365	TRAVERSA INFERIORE	5106530	●	●	●	●	●	●	●	●	●	●	●	●	●	●	●	●																							
365	TRAVERSA INFERIORE HT85-100	5116200												●	●	●	●	●																							
380	ANELLO OR 4,47X1,78	5400620	●	●	●	●	●	●	●	●	●	●	●	●	●	●	●	●																							
381	PERNO D.8 PER CRUSCOTTO	5209830	●	●	●	●	●	●	●	●	●	●	●	●	●	●	●	●																							
382	CAVO CANDELA RIVELAZIONE	8419910				●			●			●			●							S																			
382	CAVO CANDELA RIVELL.=250	8511130	●	●	●	●	●	●	●	●	●	●	●	●	●	●	●	●																							
408	FLANGIA SCAMBIAT.POWER HT	3202930												●	●	●	●	●																							
408	FLANGIA SCAMBIATORE DUOZ	5213560	●	●	●		●	●		●	●		●	●																											
408	FLANGIA SCAMBIATORE DUOZ	5212650				●			●			●									B508	S																			
408	FLANGIA SCAMBIATORE DUOZ	5213560				●			●			●									B509	(5)																			
409	GUARNIZIONE BRUCIATORE HT	710624300	●	●	●	●	●	●	●	●	●	●	●	●	●	●	●	●																							
410	DIAFRAMMA ARIA GAS 45,5	5117360														●	●																								

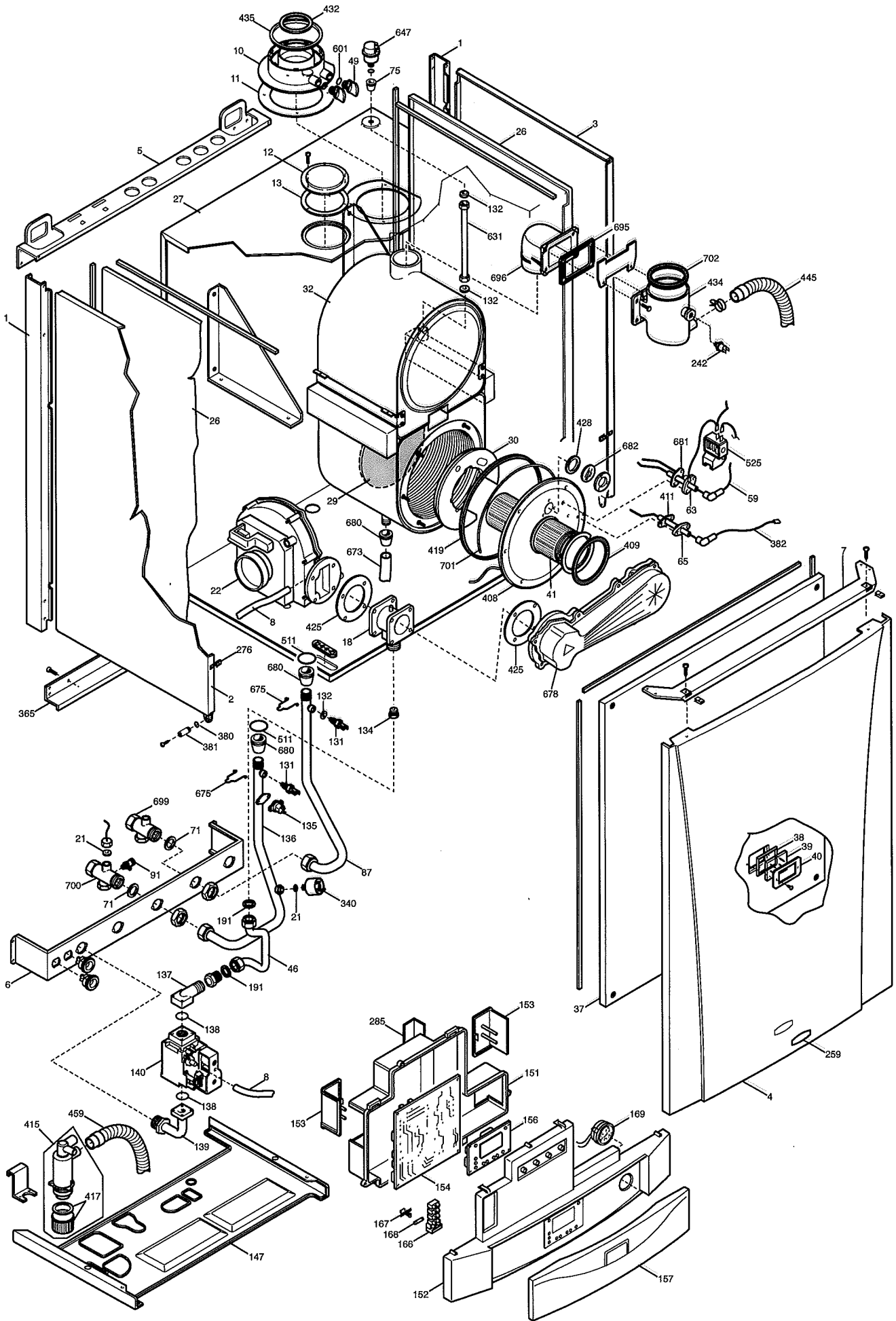
# LUNA HT RESIDENTIAL

POS.	Descrizione	Codice ricambio	<div style="display: flex; justify-content: space-between;"> <span>HSB43533000 - LUNA HT 1.350 BAXI</span> <span>HSB43533001 - LUNA HT 1.350 BAXI</span> <span>HSB43533002 - LUNA HT 1.350 BAXI</span> <span>HSB43533000-1-2-3-4-5 -LUNA1_350</span> <span>HSB435433006 - LUNA HT 1_350 -BAXI-</span> <span>HSB435433007 - LUNA HT 1_350</span> <span>HSB435533000-1-2-3-4-5 -LUNA1_450</span> <span>HSB435533006 - LUNA HT 1_450 -BAXI-</span> <span>HSB435533007 - LUNA HT 1_450</span> <span>HSB435633000-1-2-3-4-5 -LUNA1_550</span> <span>HSB435633006 - LUNA HT 1_550 -BAXI-</span> <span>HSB435633007 - LUNA HT 1_550</span> <span>HSB435833007 - LUNA HT 1_850 -BAXI-</span> <span>HSB435830000-1-2-3-4-5 -LUNA1_850</span> <span>HSB435830002 - LUNA HT 1_850 -BAXI-</span> <span>HSB435100000 - LUNA HT 1_850 IT-AT-TR</span> <span>HSB435100001-2 - LUNA HT 1_850 IT-AT-TR</span> <span>HSB435100003 - LUNA HT 1_1000 IT-AT-TR</span> <span>HSB435100004 - LUNA HT 1_1000 IT-AT-TR</span> </div>																		Matr. iniz.	Matr. fin.	int.	Note
			HT 1	HT 1	HT 2	HT 1	HT 1	HT 2	HT 1	HT 1	HT 2	HT 3	HT 3	HT 4	HT 5	HT 6	HT 7	HT 8	HT 9					
411	GUARNIZIONE CANDELA RIVELAZ.	5409110	●	●	●	●	●	●	●	●	●	●	●	●	●	●	●	●						
415	ASSIEME SIFONE LUNA HT	5677920	●	●	●		●	●		●	●		●	●										
415	CORPO SIFONE POLIPR./TRASP.	5409060				●				●											B515	S		
415	SIFONE NATALINI	3621200												●	●	●	●	●						
415	ASSIEME SIFONE LUNA HT	5677920				●				●			●								B516			
417	ASS.TAPPO SIFONE C/GUARNIZIONE	615380				●				●			●								B515			
419	TRECCIA D.6 FIBRA	5212780	●	●	●	●	●	●	●	●	●	●	●	●	●	●	●	●	●					
423	RACCORDO PER VALVOLA GAS	3203020												●	●	●	●	●						
425	GUARNIZIONE VENTILAT. LUNA HT	5409130				●				●			●								B539	S		
425	GUARNIZIONE VENTURI	5411420	●	●	●		●	●		●	●		●	●							B540			
425	GUARNIZIONE VENTURI	5411420				●				●			●											
428	GUARNIZIONE VETRINO	5409290	●	●	●	●	●	●	●	●	●	●	●	●	●	●	●	●	●					
432	GUARN.EPDM DN 110mm GRIGIO	3402210													●	●	●	●	●					
432	GUARNIZIONE A LABBRO D.80	5410850	●	●	●	●	●	●	●	●	●	●	●	●										
434	ASS.RACC.SEP.FUMI/RACC.TERM.	5701590				●				●			●											
434	RACCORDO SEPARATORE FUMI	5410680	●	●		●	●	●	●	●	●	●	●	●							B949			
434	ASS.RACC.SEP.FUMI/RACC.TERM.	5701590	●	●		●	●	●	●	●	●	●	●								B950			
435	GUARN.EPDM DN 160mm GRIGIO	5412620												●	●	●	●	●						
435	GUARNIZ.NE A LABBRO D.125	5410860	●	●	●	●	●	●	●	●	●	●	●	●										
443	RACCORDO TERMOSTATO FUMI	5212090	●	●		●	●	●	●	●	●	●	●								B949			
445	TUBO SIF.FLEX2/POR.L=1000	5410750	●	●	●	●	●	●	●	●	●	●	●											
445	TUBO SIFONE/SCAMB.HT 85-100	5412410												●	●	●	●	●			1239	S		
445	ASS.TUBO SCAR.CONDENSEA 85/100	711139000												●	●	●	●	●			1240			
459	TUBO SIFONE FLEX 1/PORTAG.	5409320				●				●												S		
459	TUBO SCARICO SIF.PVC NERO	3402170													●	●	●	●	●					
459	TUBO SCARICO SIFONE	5411610	●	●	●	●	●	●	●	●	●	●	●	●	●	●	●	●	●					
511	ANELLO OR 20,24X2,62 EPDM	5411330	●	●	●	●	●	●	●	●	●	●	●	●										
525	ACC.ANSTOSS-ZAG 2 V (07000068)	8435220	●	●	●	●	●	●	●	●	●	●	●	●	●	●	●	●	●					
601	ANELLO OR 8,73X1,78 EPDM	5408560	●	●	●	●	●	●	●	●	●	●	●	●	●	●	●	●	●					
631	ASSIEME TUBO SFIATO	5670530	●	●	●	●	●	●	●	●	●	●	●	●										
631	TUBO SFIATO HT 100kW	5681520														●	●	●						
631	TUBO SFIATO HT 85kW	5681740													●	●	●	●	●					
647	VALV. SF. ARIA G3/8-SFIATO LAT	5652730	●	●	●	●	●	●	●	●	●	●	●	●	●	●	●	●	●					
673	TUBO EPDM 15X23 SAGOMATO	5410760	●	●	●	●	●	●	●	●	●	●	●	●										
675	CLIP SCAMB.DUOZ TUBO D.28	5118120												●	●	●	●	●						
675	CLIP X SCAMBIATORE DUOZ	5114730	●	●	●	●	●	●	●	●	●	●	●	●										
678	ASSIEME COPERCHIO ARIA/GAS	5671090	●	●	●	●	●	●	●	●	●	●	●	●										
678	COLLETTORE VENT.HT 85-100	5213760												●	●	●	●	●						
680	GUARNIZIONE PASSATUBO D.15	5409250	●	●	●	●	●	●	●	●	●	●	●	●	●	●	●	●	●					
681	GUARN.CANDELA ACCENSIONE	710185300				●				●			●					●						
681	GUARNIZIONE CANDELA ACCENSIONE	5409120	●	●		●	●			●	●		●	●		●	●	●			B938	S		
681	GUARN.CANDELA ACCENSIONE	710185300	●	●		●	●			●	●		●	●		●	●	●			B939			
682	VETRINO ISPEZIONE FIAMMA	5211800	●	●	●	●	●	●	●	●	●	●	●	●	●	●	●	●	●					
695	GUARNIZ.SEPARATORE FUMI	5410700	●	●	●	●	●	●	●	●	●	●	●	●										
696	RACCORDO FUMI	5410690	●	●	●	●	●	●	●	●	●	●	●	●										
699	RACCORDO MANDATA RISCALD.	5212680	●	●	●	●	●	●	●	●	●	●	●	●										
699	RACCORDO R.R.HT 85-100	5213800													●	●	●	●	●					
700	RACCORDO M.R.HT 85-100	5213810													●	●	●	●	●					
700	RACCORDO RITORNO RISCALD.	5212690	●	●	●	●	●	●	●	●	●	●	●	●										
701	GUARN.LABBRO FLANG/SCAMB.	5410810	●	●	●	●	●	●	●	●	●	●	●	●	●	●	●	●	●					
702	GUAR.RACC/COLLETTORE D.70	5409270	●	●	●	●	●	●	●	●	●	●	●	●										
721	ANELLO OR 2131 -NBR-	3400430												●	●	●	●	●						
722	OR 70 X 3 NBR (69,44X3,53)	3402100												●	●	●	●	●						
731	GUARNIZIONE 32X39X2	3402200												●	●	●	●	●						

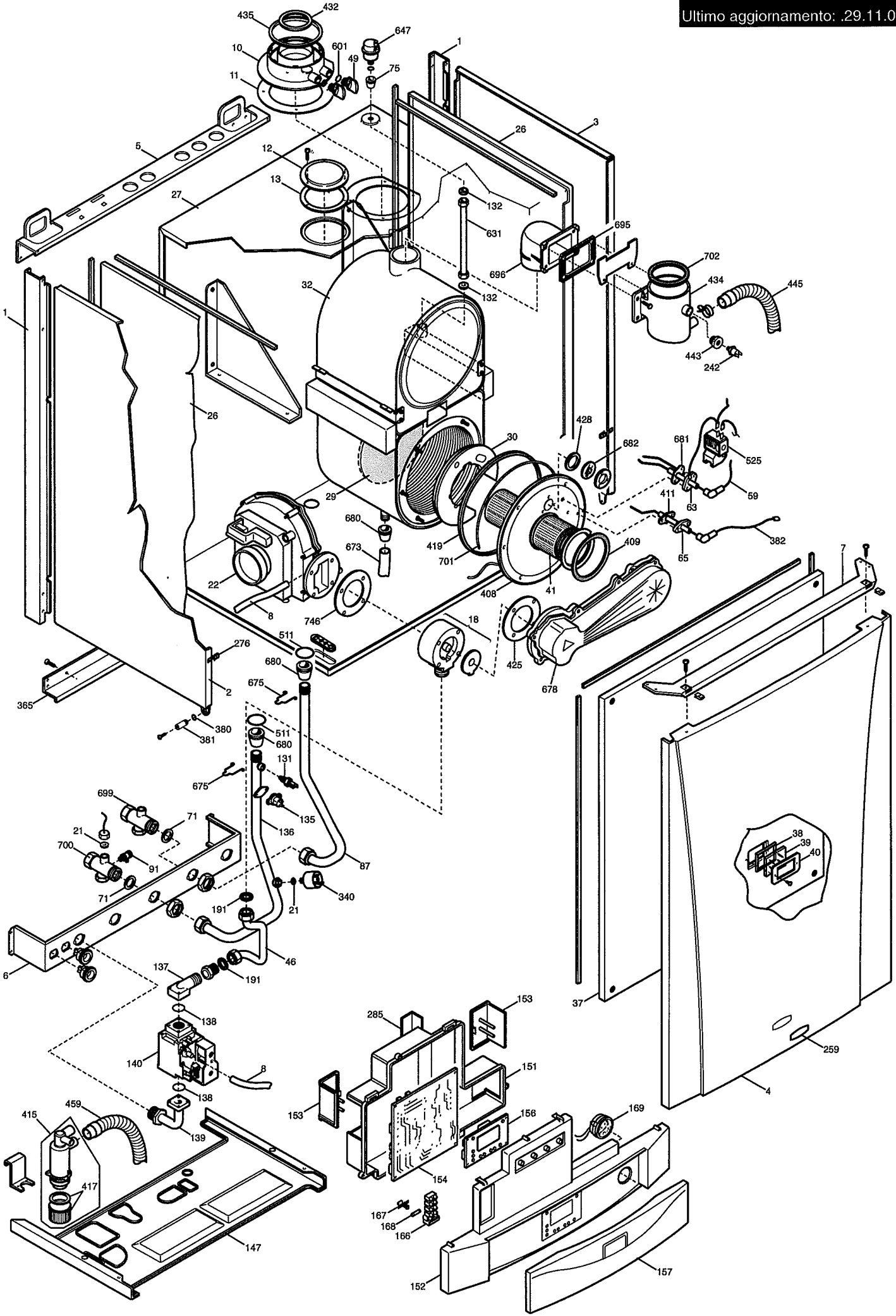


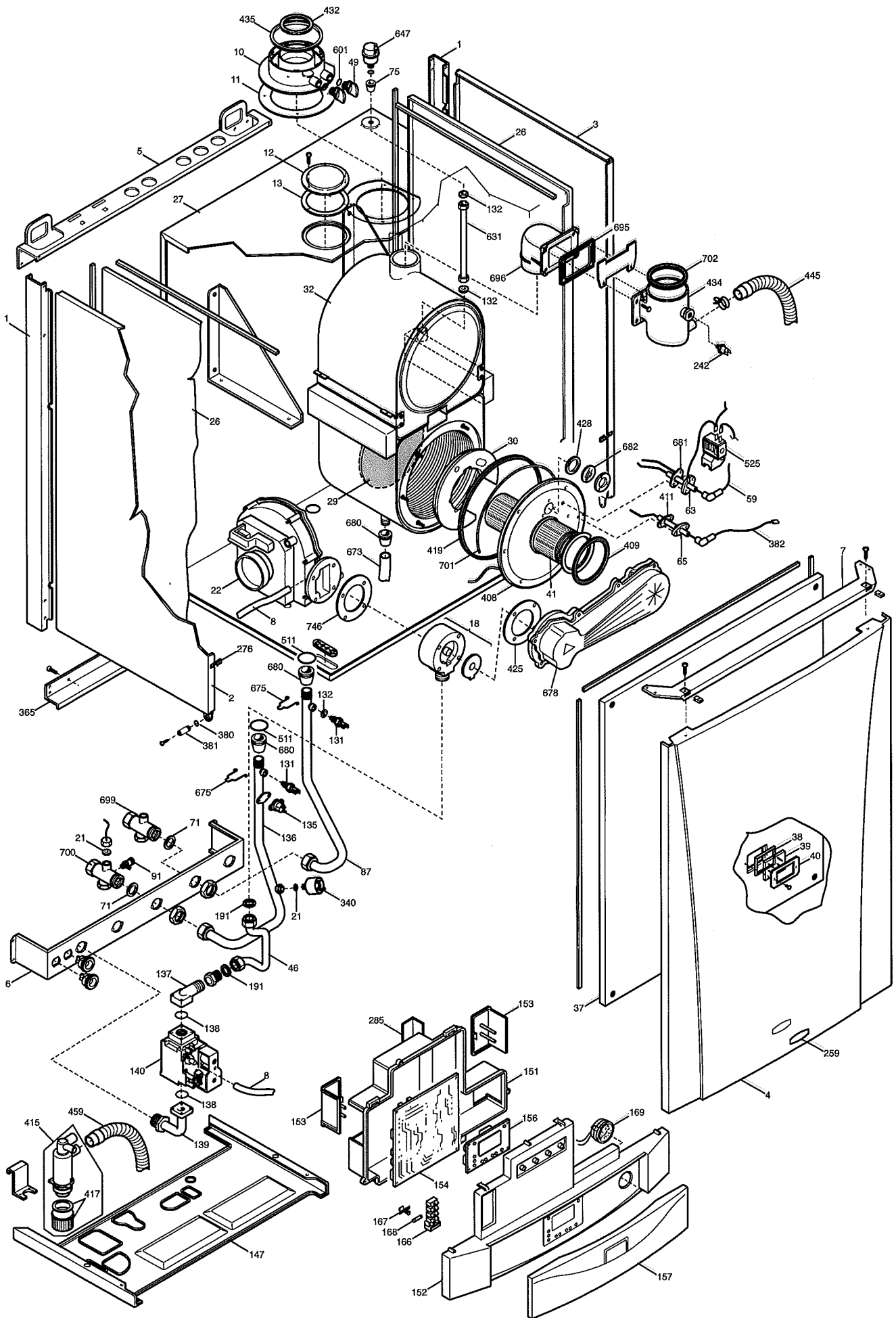


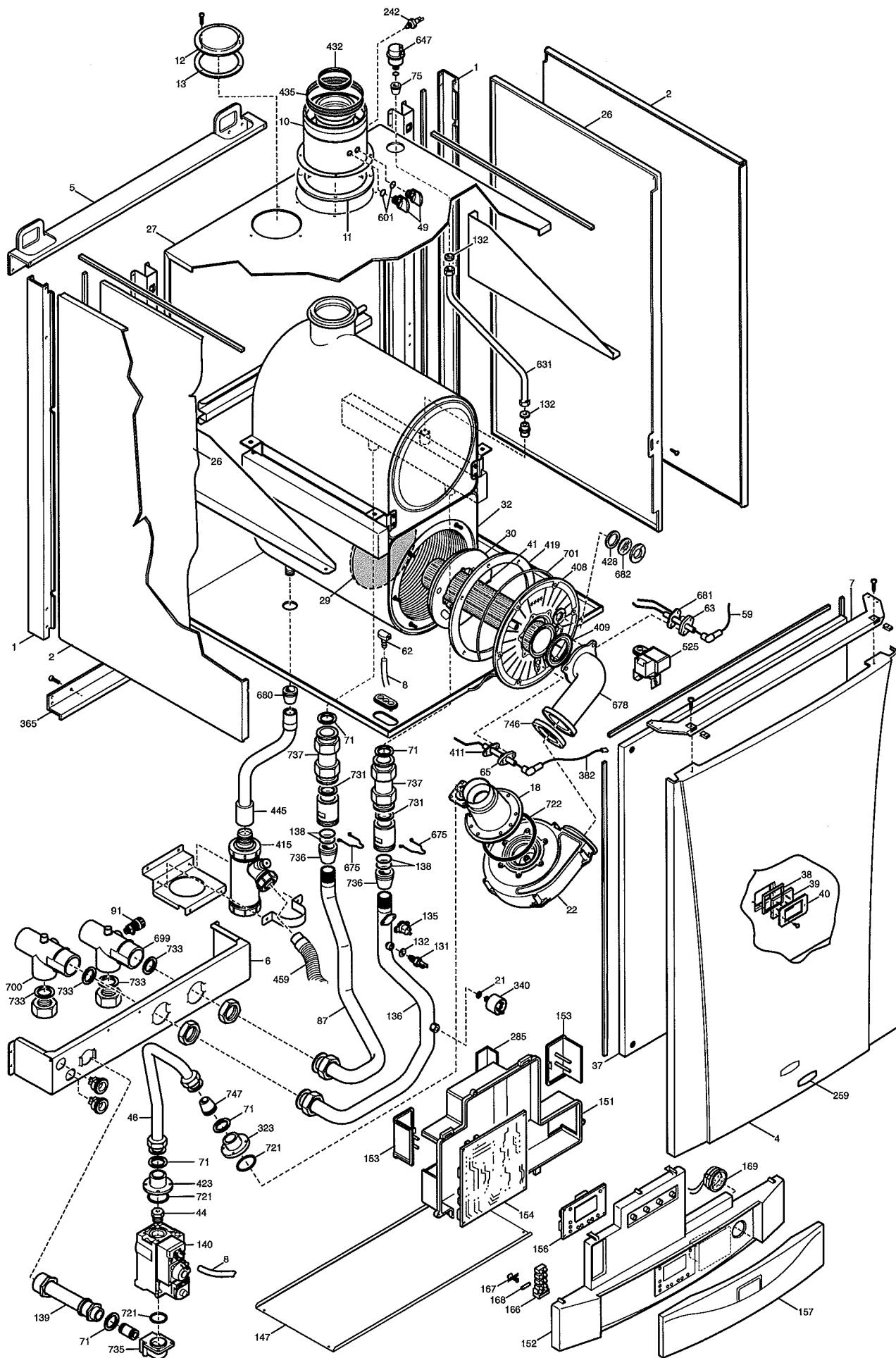
















# HT - 7

Ultimo aggiornamento: .03.03.10

