



ARISTON

SPARE PARTS EXPLODED VIEW GAS-WALL CONDENSING BOILERS

Model

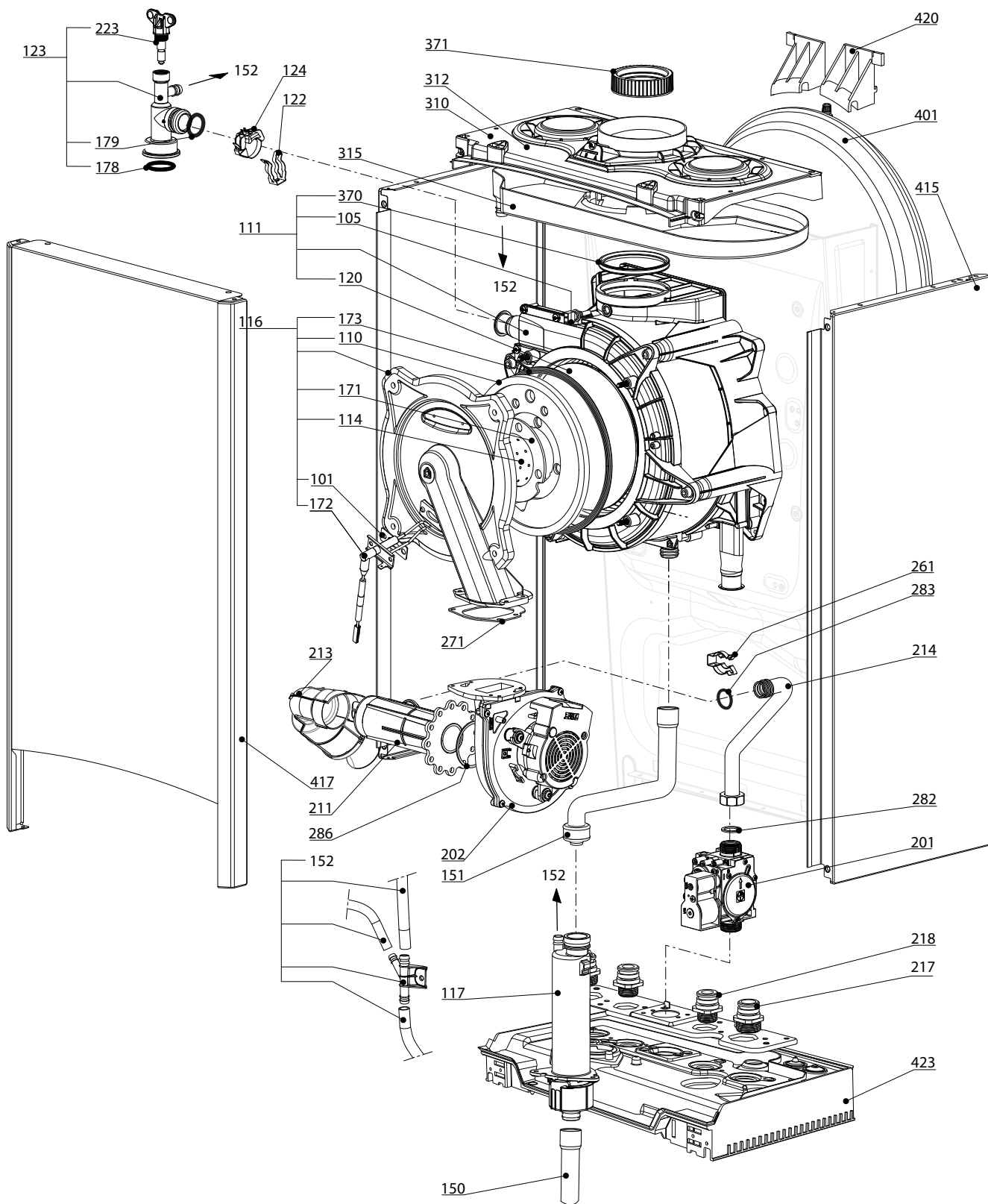
CLAS ONE

R8203484-03 - 12/10/2017

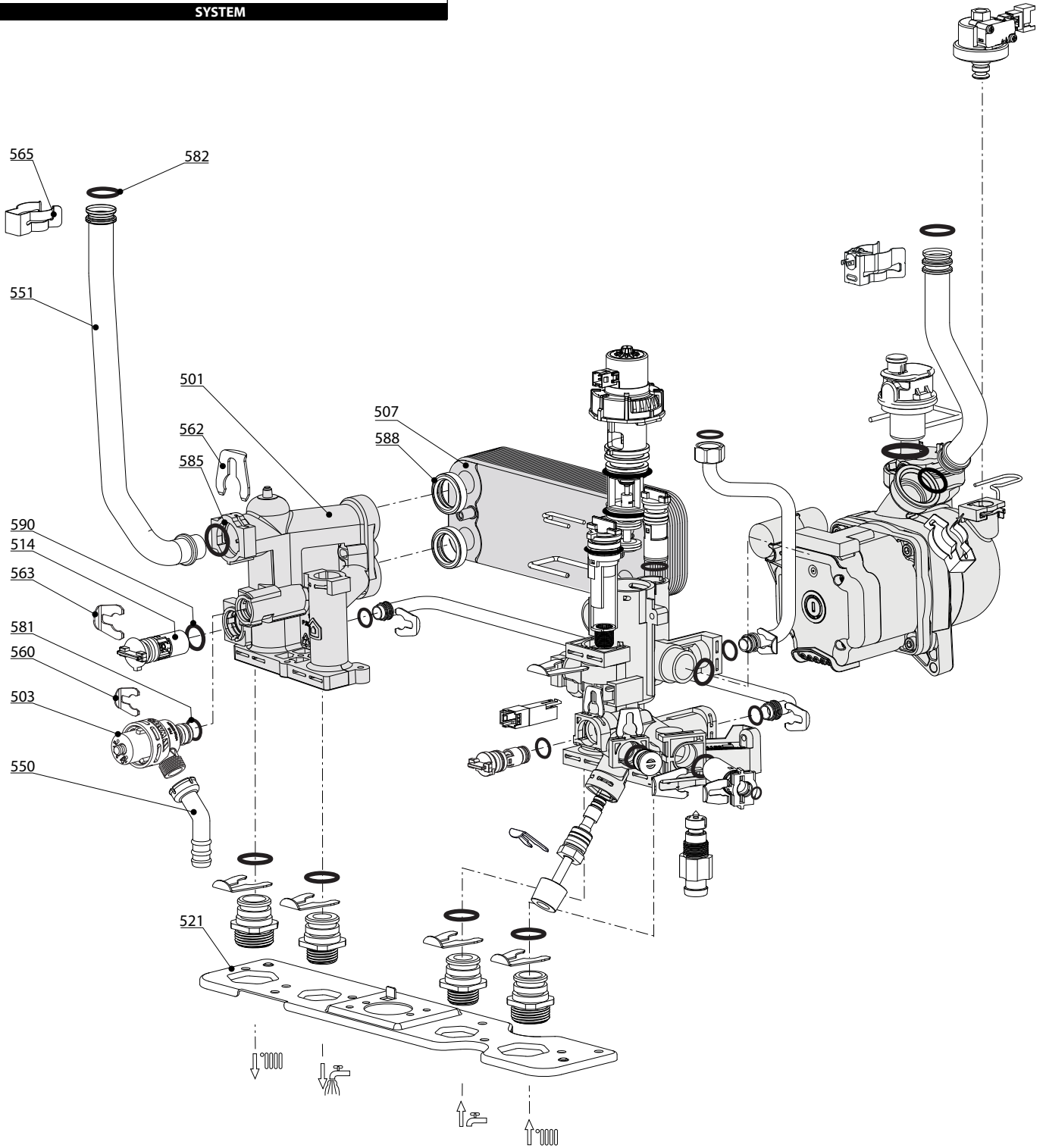
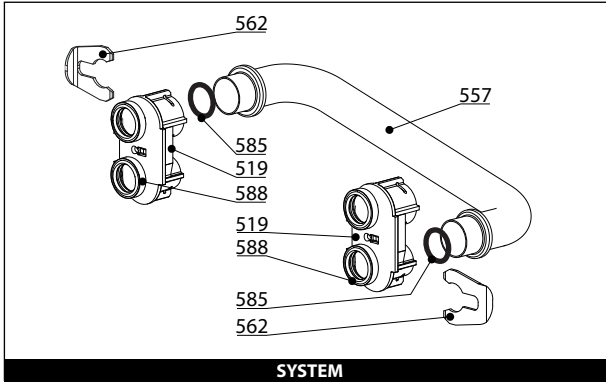
CLAS ONE

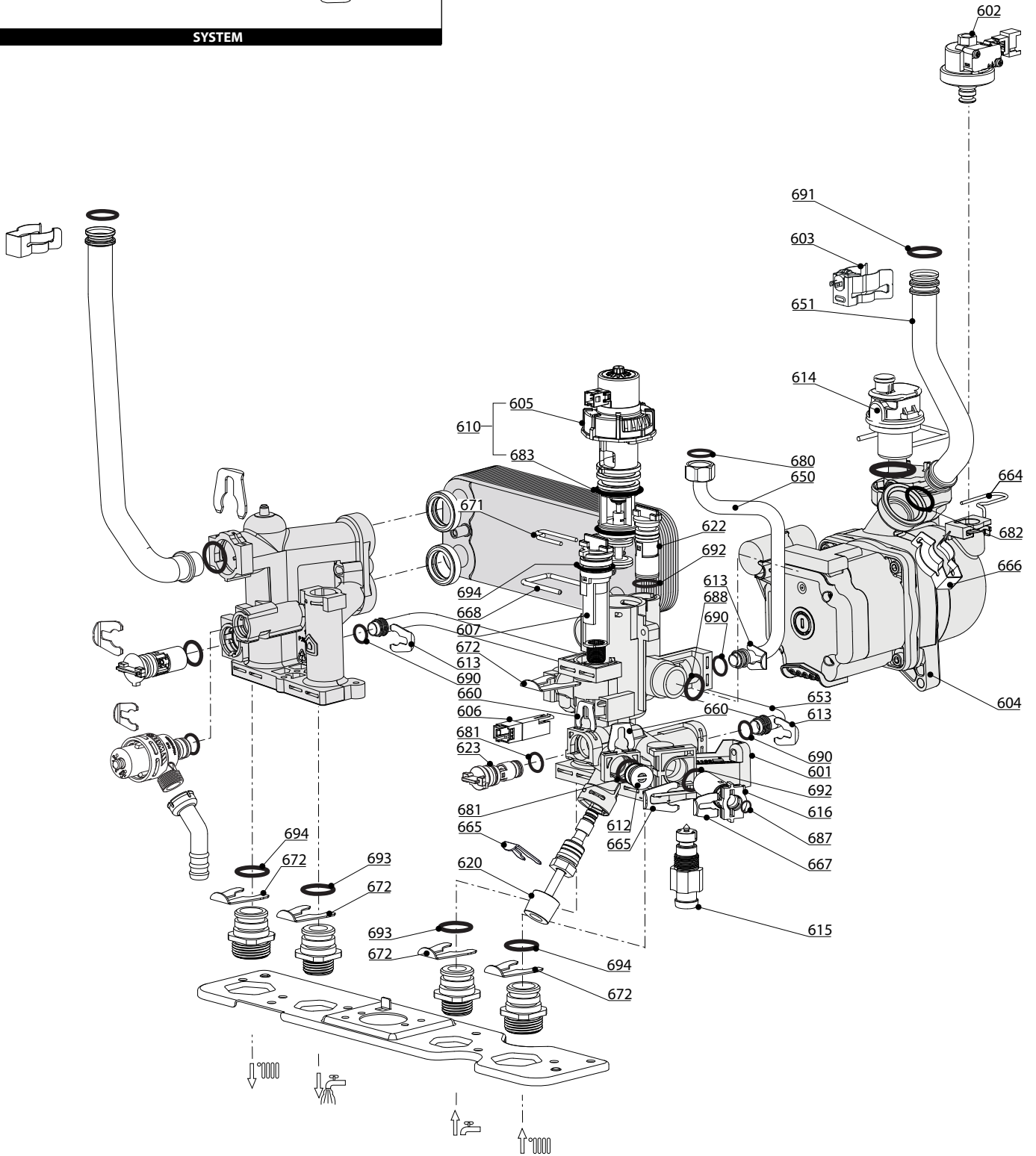
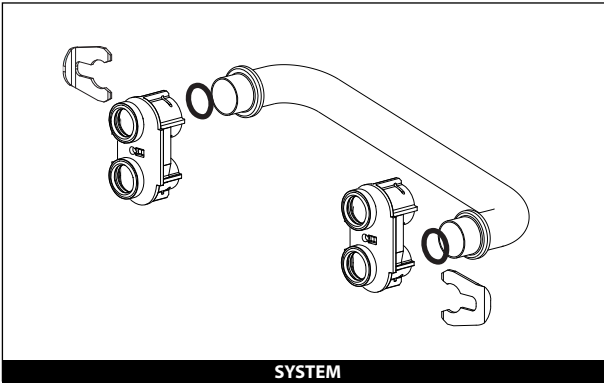
Gas-wall condensing boilers

1	3301021	CLAS ONE 24	07-2017	-
1	3301116	CLAS ONE NET 24	07-2017	-
2	3301022	CLAS ONE 30	07-2017	-
2	3301117	CLAS ONE NET 30	07-2017	-
3	3301024	CLAS ONE L 30		
4	3301023	CLAS ONE 35	07-2017	-
5	3301030	CLAS ONE SYSTEM 18	07-2017	-
6	3301031	CLAS ONE SYSTEM 24	07-2017	-
7	3301035	CLAS ONE SYSTEM 30	07-2017	-
8	3301032	CLAS ONE SYSTEM 35	07-2017	-
Col	Reference	Model type	Begin	End

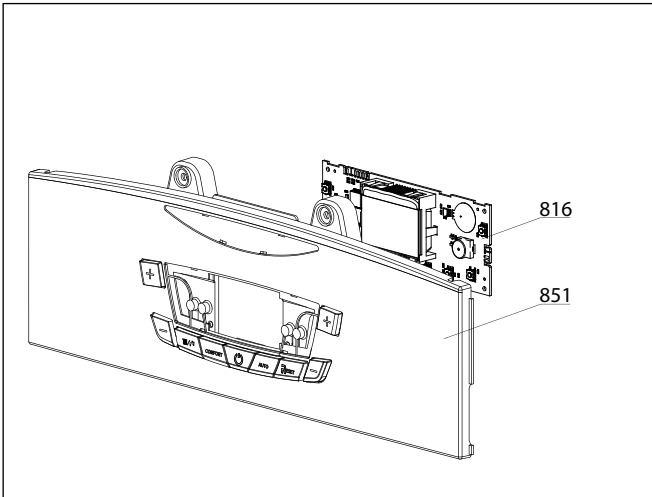
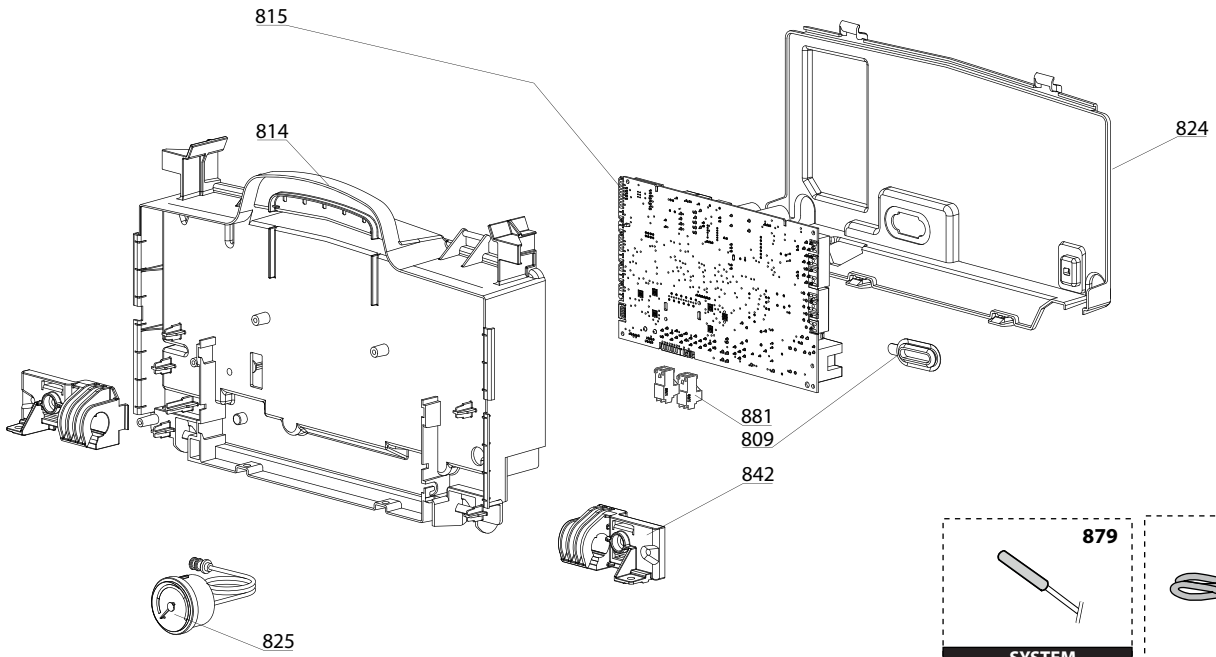


☉→	Description	Manf. Pt. N	Type	CLAS ONE-24 CLAS ONE-30 CLAS ONE L-30 CLAS ONE-35 CLAS ONE SYSTEM 18 CLAS ONE SYSTEM 24 CLAS ONE SYSTEM 30 CLAS ONE SYSTEM 35																		From	to
				1	2	3	4	5	6	7	8	9	10	11	12	13	14	15	16	17	18		
0100	BURNER ASSEMBLY																						
0101	IGNITION ELECTRODE	65116595		•	•	•	•	•	•	•	•	•	•										
0110	INSULATION (FRONT PANEL)	65116512		•	•	•	•	•	•	•	•	•	•										
0111	EXCHANGER 24KW	65116695		•				•	•														
	EXCHANGER 30KW	65116696			•	•			•														
	EXCHANGER 35KW	65116697					•			•													
0114	BURNER 24KW	65116596		•				•	•														
	BURNER 30kW	65116603			•	•			•														
	BURNER 35KW	65116604					•			•													
0116	DOOR ASSY	65116515		•	•	•	•	•	•	•	•	•	•										
0117	CONDENSATE TRAP	65116516		•	•	•	•	•	•	•	•	•	•										
0120	PANEL (INSULATION - REAR)	65116047		•	•	•	•	•	•	•	•	•	•										
0122	CLIP	65116517		•	•	•	•	•	•	•	•	•	•										
0123	AIR VENT	65116518		•	•	•	•	•	•	•	•	•	•										
0124	TEMPERATURE PROBE + CLIP	990686-01		•	•	•	•	•	•	•	•	•	•										
0150	TUBE PVC D:19 L:500	60000976		•	•	•	•	•	•	•	•	•	•										
0151	FLEXIBLE PIPE	65116519		•	•	•	•	•	•	•	•	•	•										
0152	CONNECTION Y +TUBES	65117078		•	•	•	•	•	•	•	•	•	•										
0171	GASKET	65116521		•	•	•	•	•	•	•	•	•	•										
0172	GASKET (IGNITION ELECTRODE)	65116263		•	•	•	•	•	•	•	•	•	•										
0173	DOOR GASKET	60000623		•	•	•	•	•	•	•	•	•	•										
0178	O-RING 17.86X2.62	61308091		•	•	•	•	•	•	•	•	•	•										
0179	O-RING 18X2,8	65116846		•	•	•	•	•	•	•	•	•	•										
0200	GAS SECTION																						
0201	GAS VALVE	60002799		•	•	•	•	•	•	•	•	•	•										
0202	FAN	65116558		•	•	•	•	•	•	•	•	•	•										
0211	VENTURI 24KW	65116597		•				•	•														
	VENTURI 30KW	65116605			•	•			•														
	VENTURI 35KW	65116606					•			•													
0213	SILENCER	65116598		•	•	•	•	•	•	•	•	•	•										
0214	GAS PIPE 24KW	65116599		•				•	•														
	GAS PIPE 30KW	65116607			•	•			•														
	GAS PIPE 35KW	65116608					•			•													
0217	UNION (3/4»)	65114929		•	•	•	•	•	•	•	•	•	•										
0218	UNION (1/2»)	65114930		•	•	•	•	•	•	•	•	•	•										
0223	DRAIN SCREW	65116528		•	•	•	•	•	•	•	•	•	•										
0261	CLIP	60000309		•	•	•	•	•	•	•	•	•	•										
0271	FAN GASKET	65116530		•	•	•	•	•	•	•	•	•	•										
0282	SHEET GASKET D: 24-18.2-1.5	60022835-01		•	•	•	•	•	•	•	•	•	•										
0283	O-RING 17,86X2,62	60002766		•	•	•	•	•	•	•	•	•	•										
0286	GASKET	60001878		•	•	•	•	•	•	•	•	•	•										
0300	FAN ASSEMBLY																						
0310	CASE COVER ASSY	65116531		•				•	•														
	CASE COVER ASSY	65116564			•	•	•		•	•	•												
0312	FLUE INTAKE PLUG	65104295		•	•	•	•	•	•	•	•	•	•										
0315	SPLASH PREVENTER	65116536		•	•	•	•	•	•	•	•	•	•										
0370	SEALING RING 80mm	60002815-01		•	•	•	•	•	•	•	•	•	•										
0371	GASKET	60000316		•	•	•	•	•	•	•	•	•	•										
0400	SEALED CASE																						
0401	EXPANSION VESSEL 10L	65114173				•																	
	EXPANSION VESSEL 8L	65104261		•	•		•		•	•	•	•	•										
0415	SIDE PANELS LEFT + RIGHT	65116600		•				•	•														
	SIDE PANELS LEFT + RIGHT	65116609			•	•	•		•	•													
0417	CASE PANEL (FRONT)	65116568		•	•	•	•	•	•	•	•	•	•										
0420	EXPANSION VESSEL SUPPORT 10L	65117082				•																	
	EXPANSION VESSEL SUPPORT 8L	65116534		•	•		•		•	•	•	•	•										
0423	PLATE WIRE BOX 18-24 KW	65116601		•				•	•														
	PLATE WIRE BOX 30-35KW	65116610			•	•	•		•	•													

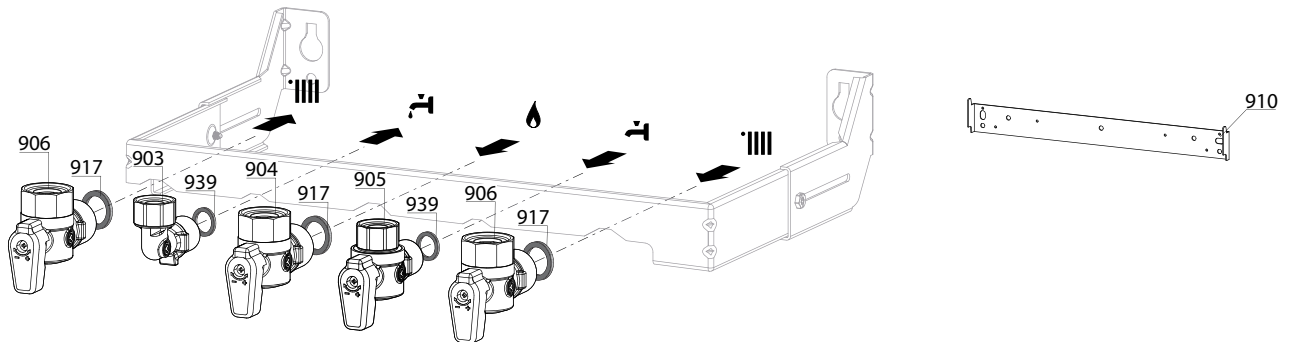




☉→	Description	Manf. Pt. N	Type	<div style="display: flex; justify-content: space-between; font-size: small;"> CLAS ONE-24CLAS ONE-30CLAS ONE L 30CLAS ONE-35CLAS ONE SYSTEM 18CLAS ONE SYSTEM 24CLAS ONE SYSTEM 30CLAS ONE SYSTEM 35 </div>																		From	to
				1	2	3	4	5	6	7	8	9	10	11	12	13	14	15	16	17	18		
0600	RETURN GROUP																						
0601	RETURN GROUP	65116540		●	●	●	●																
	RETURN GROUP	65116613						●	●	●	●												
0602	LOW PRESSURE SWITCH	65115792		●	●	●	●	●	●	●	●												
0603	TEMPERATURE PROBE + CLIP	990686-01		●	●	●	●	●	●	●	●												
0604	PUMP 5M PWM TACO	65116908	TACO	●	●		●	●	●	●	●												
	PUMP YONOS	60002375	YONOS				●																
0605	MOTOR (3-WAY VALVE)	65114936		●	●	●	●	●	●	●	●												
0606	SENSOR (REED)	65114921-01		●	●	●	●																
0607	FLOW METER	65114919		●	●	●	●	●	●	●	●												
0610	MOTOR + SPRING 3 WAY VALVE KIT	65114924		●	●	●	●	●	●	●	●												
0612	PLUG	65114920		●	●	●	●	●	●	●	●												
0613	CLIP Ø 10	65104260		●	●	●	●	●	●	●	●												
0614	AUTO AIR VENT - PANASONIC	65116392	PANA.	●	●		●	●	●	●	●												
	AUTO AIR VENT - TACO ENER+	65112086	TACO	●	●		●	●	●	●	●												
	AUTO AIR VENT - WILO	65104703	YONOS				●																
0615	DRAIN COCK	65114922		●	●	●	●	●	●	●	●												
0616	WATER FILTER	65114923		●	●	●	●	●	●	●	●												
0620	FILLING TAP KIT	65116541		●	●	●	●	●	●	●	●												
0622	BY-PASS	65114917		●	●	●	●	●	●	●	●												
0623	NON-RETURN VALVE	65114918		●	●	●	●	●	●	●	●												
0650	PIPE (EXPANSION VESSEL)	65116542		●	●	●	●	●	●	●	●												
0651	PIPE (C.H. RETURN)	65116543		●	●	●	●	●	●	●	●												
0653	BY-PASS PIPE	65116210		●	●	●	●	●	●	●	●												
0660	CLIP	65114933		●	●	●	●	●	●	●	●												
0662	CLIP	61307589		●	●	●	●	●	●	●	●												
0664	CLIP	65104322		●	●	●	●	●	●	●	●												
0665	CLIP	65114932		●	●	●	●	●	●	●	●												
0666	CLIP	60000309		●	●	●	●	●	●	●	●												
0667	CLIP	65100680		●	●	●	●	●	●	●	●												
0668	CLIP	65114927		●	●	●	●	●	●	●	●												
0671	CLIP	65114926		●	●	●	●	●	●	●	●												
0672	CLIP	65114931		●	●	●	●	●	●	●	●												
0680	GASKET 3/8»	573521		●	●	●	●	●	●	●	●												
0681	O-RING 9.9X2.62	65114937		●	●	●	●	●	●	●	●												
0682	O-RING 17.04X3.53	65104262		●	●	●	●	●	●	●	●												
0683	O-RING 23.47X2.62	65114939		●	●	●	●	●	●	●	●												
0687	O-RING 5.7X1.9	61009834-10		●	●	●	●	●	●	●	●												
0688	O-RING 21.89X2.62	65104320		●	●	●	●	●	●	●	●												
0690	O-RING 8.9X2.7	61009834-14		●	●	●	●	●	●	●	●												
0691	O-RING 17.86X2.62	61308091		●	●	●	●	●	●	●	●												
0692	O-RING 11.91X2.62	65114940		●	●	●	●	●	●	●	●												
0693	O-RING 15,88X2,62	65114941		●	●	●	●	●	●	●	●												
0694	O-RING 17.13X2.62	65114938		●	●	●	●	●	●	●	●												



900



5000

5001
 Transf. gaz
 Conv. gas
 Trasn. gas
 Transf. gas

5020
 Options
 Accessories
 Opzioni
 Accessorio

LIST OF THE ABBREVIATIONS

HW	: Hot water.
CW	: Cold water.
C	: Ceramic resistance (normal heating).
Ca	: Ceramic resistance (accelerated heating)
TP	: Immersion heater.
1F	: With fittings.
2F	: Without fittings.
3F	: With fittings and another outlet connection.
AMI	: With mixing valve.
SMI	: Without mixing valve.
PUISS	: Power of th appliance.
PN	: Appliance with normal pression.
LP	: Appliance with low pression.
PV	: Appliance with variable power.
PF	: Appliance with fixed power.

IDENTIFICATION PLATE

SERIAL NUMBER

10 Characters :	04 05 125 011		
		Sequential number	
		Manufacturing day	
		Year of manufacture	
11 Characters :	1 95 065004 - 31		
Month of manufacture :		Technical number of the appliance	
from 1 to 9 → Jan. to Sep.,		Sequential number	
O → Oct., N → Nov.,		Year of manufacture	
D → Dec.			
19 Characters :	08 05 0013199 900640031		
Year of manufacture		Product reference	
Month of manufacture		Sequential number	
20 Characters :	3675007 XX 2 07 070 00315		
Product reference		Sequential number	
Millenium of manufacture		Manufacturing day	
		Year of manufacture	
21 Characters :	3675007 XX 07 070 0000315		
Product reference		Sequential number	
Year of manufacture		Manufacturing day	