



ARISTON

SPARE PARTS EXPLODED VIEW GAS-WALL BOILER ATM. BURNER

Model

HS X - CARES X

R8203464-05 - 16/03/2018

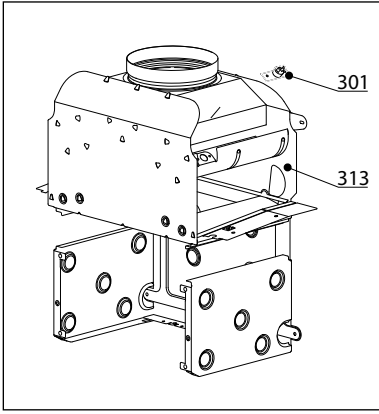
HS X - CARES X

Gas-wall boiler atm. burner

1	3300897	HS X 15 CF NG	09-2016	-
2	3300896	HS X 24 CF NG	09-2016	-
3	3300895	HS X 15 FF NG	09-2016	-
3	3300946	HS X 15 FF (RU)	12-2016	-
3	3301334	HS X 15 FF (UZB)	02-2018	-
4	3300894	HS X 18 FF NG	09-2016	-
5	3300893	HS X 24 FF NG	09-2016	-
5	3301337	HS X 24 FF NG	02-2018	-
6	3300889	CARES X 15 CF NG	09-2016	-
7	3300888	CARES X 24 CF NG	09-2016	-
8	3300887	CARES X 15 FF NG	09-2016	-
9	3300886	CARES X 18 FF NG	09-2016	-
10	3300885	CARES X 24 FF NG	09-2016	-
10	3301332	CARES X 24 FF NG	01-2018	-
11	3300891	CARES SYSTEM X 24 CF NG	12-2016	-
12	3300890	CARES X SYSTEM 24 FF NG	12-2016	-

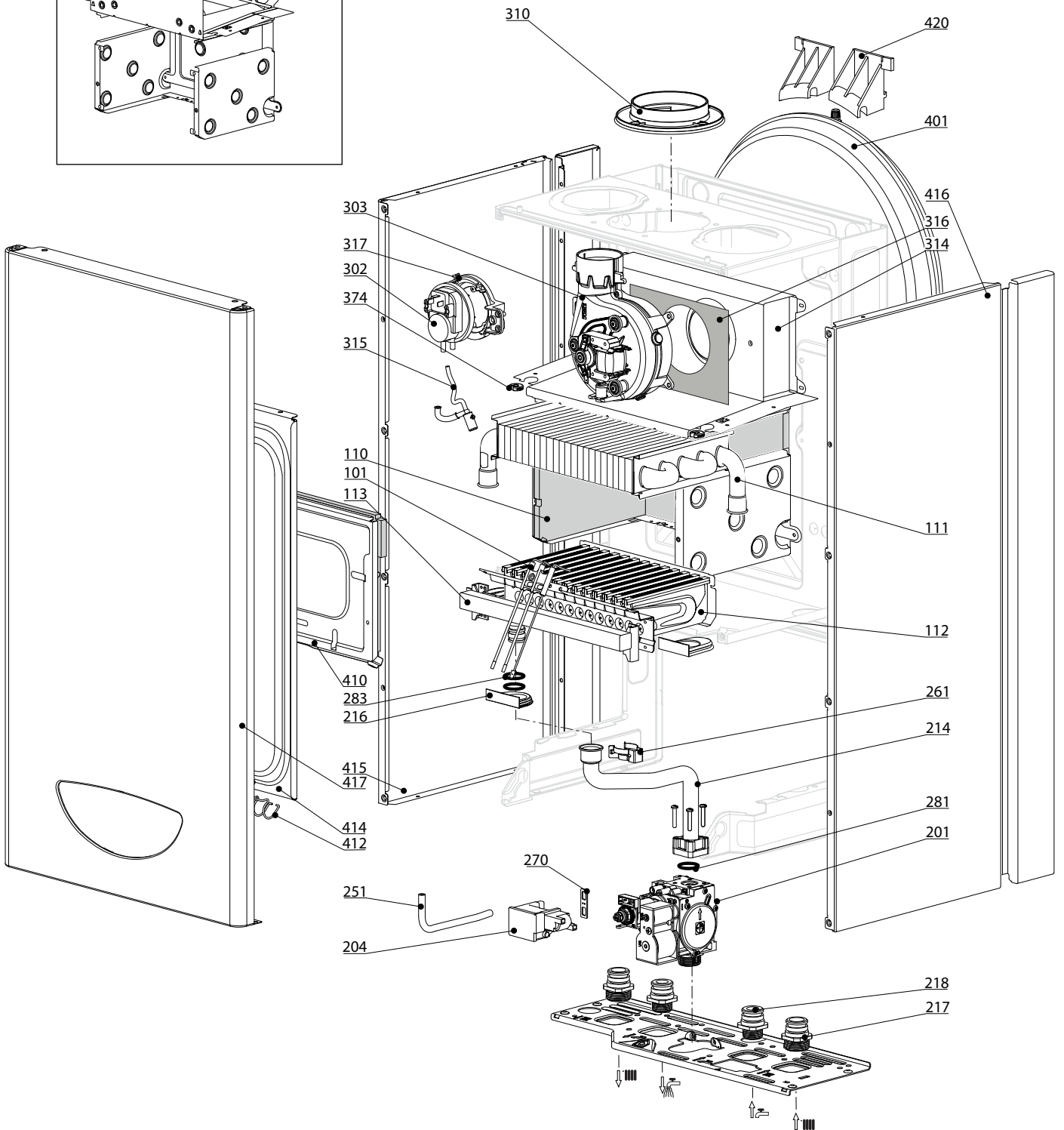
Col	Reference	Model type	Begin	End
-----	-----------	------------	-------	-----

100
200
300
400

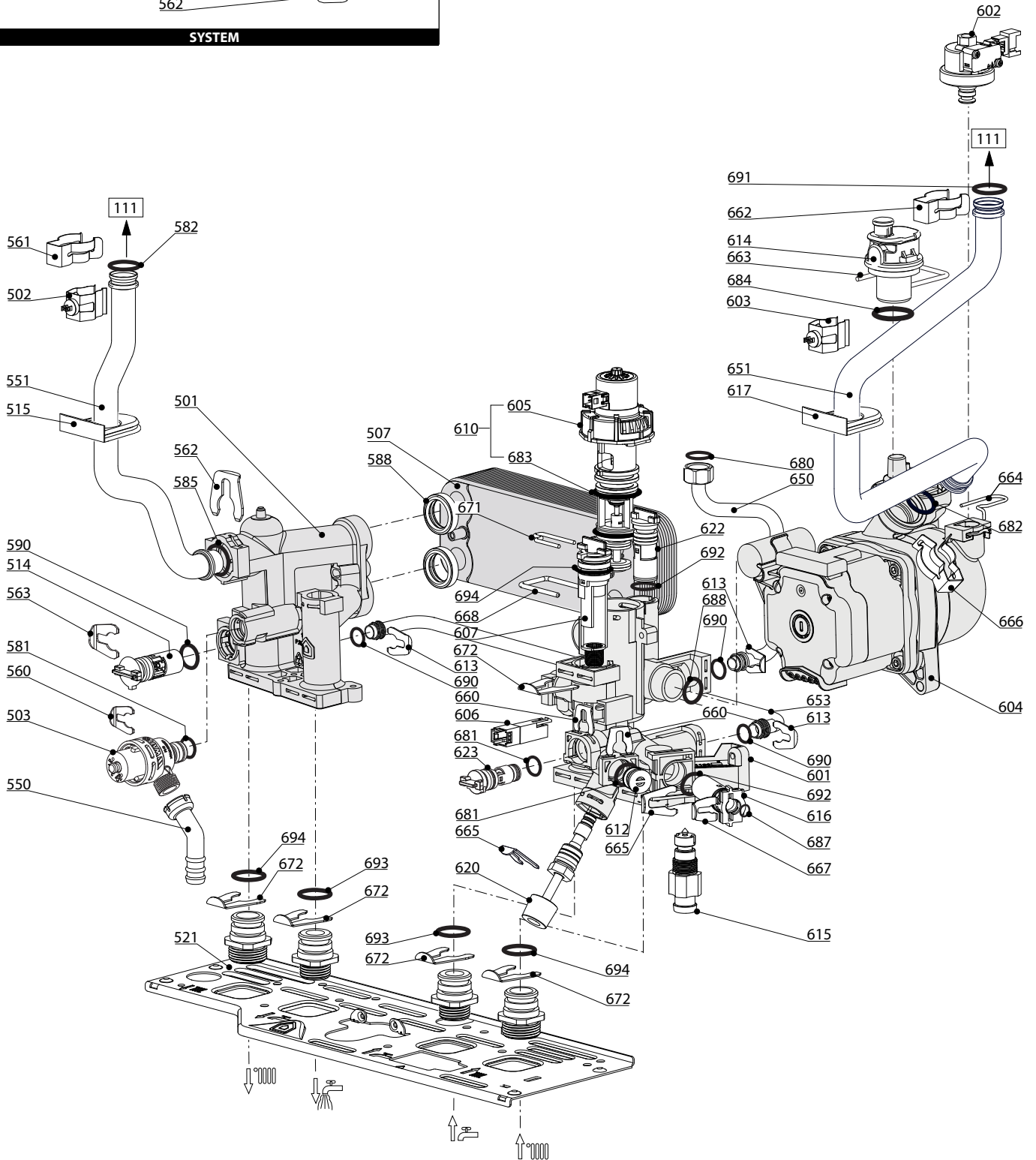
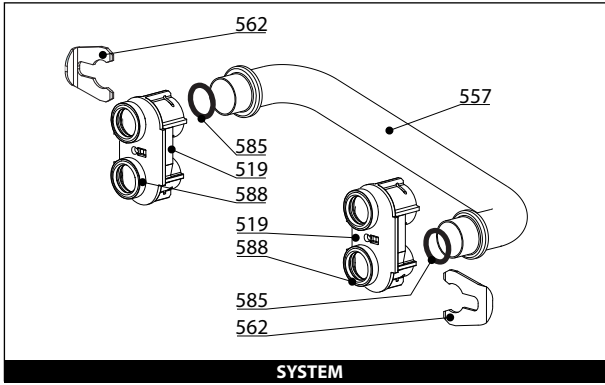


HS X - CARES X

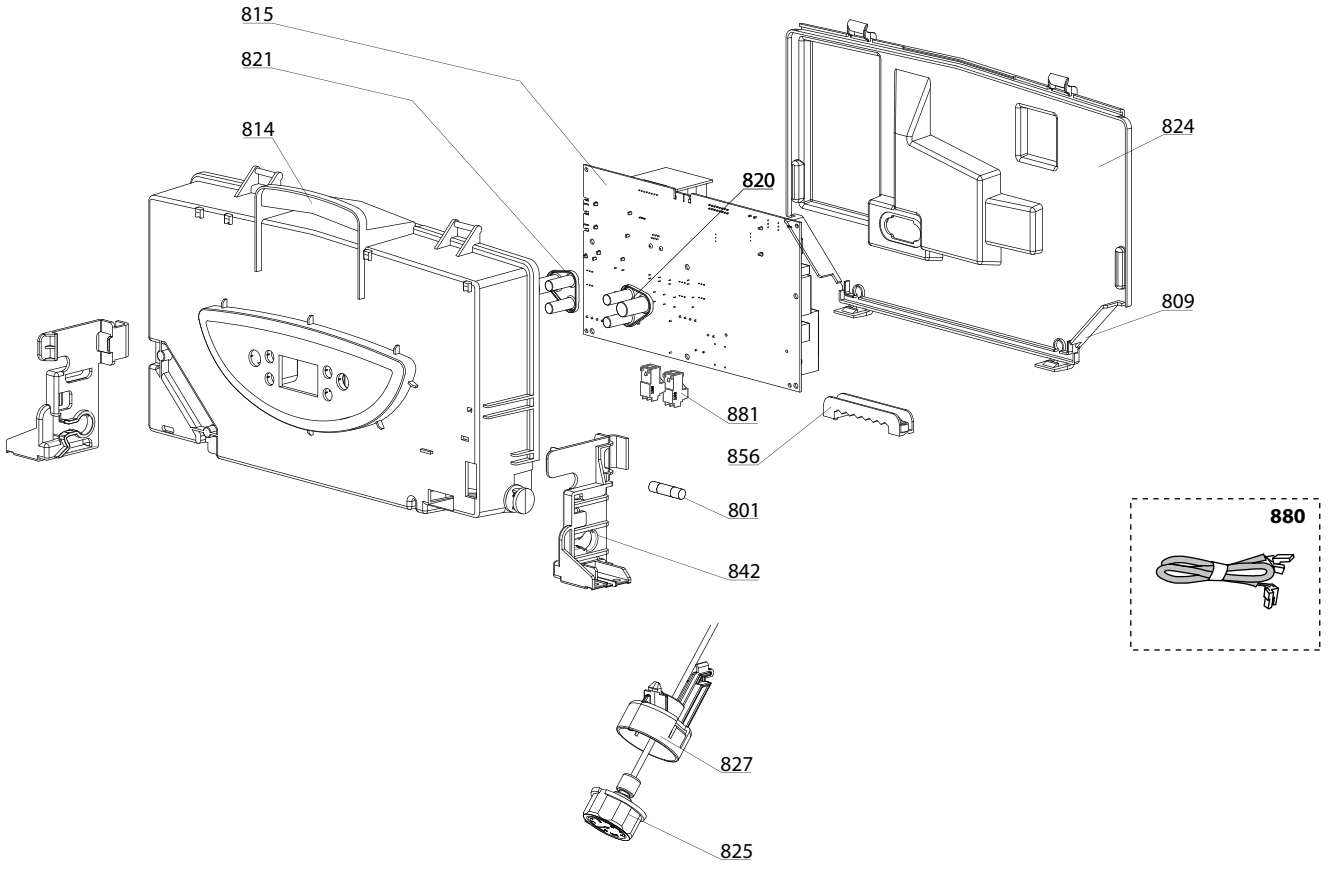
Gas-wall boiler atm. burner



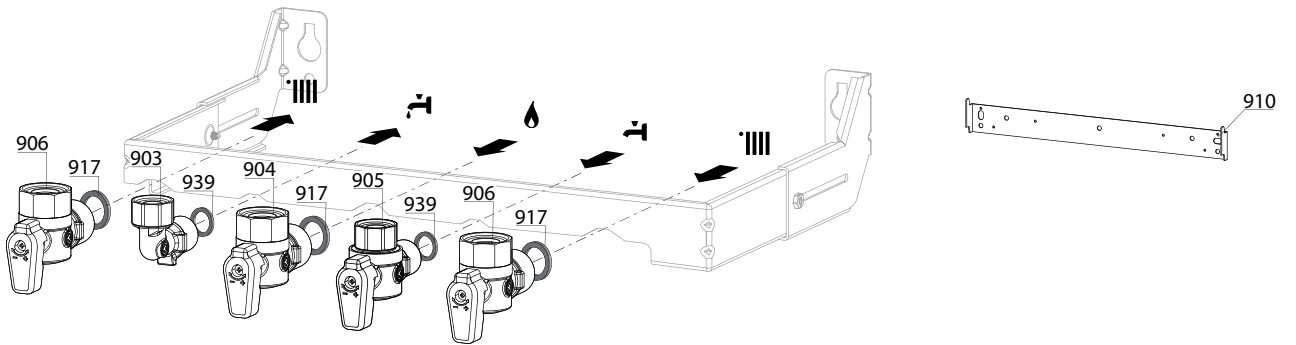
☉	Description	Manf. Pt. N	Type																			31		
				1	2	3	4	5	6	7	8	9	10	11	12	13	14	15	16	17	18	From	to	
0100 BURNER ASSEMBLY																								
0101	ELECTRODE (IGNITION/IONIZATION)	65115802		●	●	●	●	●	●	●	●	●	●	●										
0110	PANELS (KIT)	65104695		●	●				●	●		●												
	PANELS (KIT)	65106298				●	●	●			●	●	●	●										
0111	HEAT EXCHANGER	65104247		●	●				●	●					●									
	HEAT EXCHANGER	65115065				●	●	●			●	●	●	●										
0112	BURNER 11NP	65106294				●	●	●			●	●	●	●										
	BURNER 13NP	60001582		●	●				●	●					●									
0113	GAS MANIFOLD 11 INJ. D:1.32	65106302	G20			●	●	●			●	●	●	●										
	GAS MANIFOLD 13 INJ. D:1.25	65104302	G20	●	●				●	●					●									
0200 GAS SECTION																								
0201	GAS VALVE	65115771		●	●	●	●	●	●	●	●	●	●	●	●	●	●	●	●	●	●	●	●	●
0204	SPARK GENERATOR	65115791		●	●	●	●	●	●	●	●	●	●	●	●	●	●	●	●	●	●	●	●	●
0214	PIPE (GAS VALVE/BURNER)	65115772		●	●	●	●	●	●	●	●	●	●	●	●	●	●	●	●	●	●	●	●	●
0216	GROMMET	60000624		●	●	●	●	●	●	●	●	●	●	●	●	●	●	●	●	●	●	●	●	●
0217	UNION (3/4")	65114929		●	●	●	●	●	●	●	●	●	●	●	●	●	●	●	●	●	●	●	●	●
0218	UNION (1/2")	65114930		●	●	●	●	●	●	●	●	●	●	●	●	●	●	●	●	●	●	●	●	●
0251	EPDM PIPE	65115773		●	●	●	●	●	●	●	●	●	●	●	●	●	●	●	●	●	●	●	●	●
0261	CLIP	60001861		●	●	●	●	●	●	●	●	●	●	●	●	●	●	●	●	●	●	●	●	●
0270	GASKET (SPARK GENERATOR)	574279		●	●	●	●	●	●	●	●	●	●	●	●	●	●	●	●	●	●	●	●	●
0281	O-RING 22.22X2.62	65104304		●	●	●	●	●	●	●	●	●	●	●	●	●	●	●	●	●	●	●	●	●
0283	O-RING 17.17X1.78	65104303		●	●	●	●	●	●	●	●	●	●	●	●	●	●	●	●	●	●	●	●	●
0300 FAN ASSEMBLY																								
0301	THERMOSTAT 75-65°C	999539		●	●	●	●	●	●	●	●	●	●	●	●	●	●	●	●	●	●	●	●	●
0302	AIR PRESSURE SWITCH 50 Pa	65104671-01				●	●	●			●	●	●	●										
0303	FAN 24 KW	65115813				●	●	●			●	●	●	●										
0310	AIR CONNECTION	65115914				●	●	●			●	●	●	●										
0313	COMBUSTION CHAMBER 24 CF	65104218		●	●				●	●				●										
0314	COMBUSTION CHAMBER 24 FF	65115800				●	●	●			●	●	●	●										
0315	CONDENSATE TRAP	65105349				●	●	●			●	●	●	●										
0316	PANEL (INSULATION - FAN)	65104305				●	●	●			●	●	●	●										
0317	SUPPORT (AIR PRESSURE SWITCH)	65115812				●	●	●			●	●	●	●										
0319	RESTRICTOR KIT	60001598		●	●	●	●	●	●	●	●	●	●	●	●	●	●	●	●	●	●	●	●	●
0374	CABLE INLET RUBBER WASHER	60000716		●	●	●	●	●	●	●	●	●	●	●	●	●	●	●	●	●	●	●	●	●
0400 SEALED CASE																								
0401	EXPANSION VESSEL 8L	65104261		●	●	●	●	●	●	●	●	●	●	●	●	●	●	●	●	●	●	●	●	●
0410	PANEL (COMBUSTION CHAMBER)	65104240		●	●				●	●				●										
	PANEL (COMBUSTION CHAMBER)	65106296				●	●	●			●	●	●	●										
0414	PANEL (FRONT - SEALED CHAMBER)	65105678-02				●	●	●			●	●	●	●										
0416	SIDE PANELS LEFT + RIGHT - WHITE	65115804		●	●	●	●	●	●	●	●	●	●	●	●	●	●	●	●	●	●	●	●	●
0417	CASE PANEL (FRONT)	65115823				●	●	●			●	●	●	●										
	CASE PANEL (FRONT)	65115824		●	●	●	●	●			●	●	●	●										
0420	EXPANSION VESSEL SUPPORT	65104696		●	●	●	●	●	●	●	●	●	●	●	●	●	●	●	●	●	●	●	●	●



800



900



☉→	Description	Manf. Pt. N	Type	HS X 15 CF	HS X 24 CF	HS X 15 FF	HS X 18 FF	HS X 24 FF	CARES X 15 CF	CARES X 24 CF	CARES X 15 FF	CARES X 18 FF	CARES X 24 FF	CARES X SYSTEM 24 CF	CARES X SYSTEM 24 FF	From	to
				1	2	3	4	5	6	7	8	9	10	11	12		

0800	ELECTRICAL BOX			1	2	3	4	5	6	7	8	9	10	11	12	13	14	15	16	17	18	From	to
0809	GROMMET (REGULATION ACCESS)	998382		•	•	•	•	•	•	•	•	•	•	•	•								
0814	CONTROL PANEL COVER (FRONT)	65115818							•	•	•	•	•	•	•								
	CONTROL PANEL COVER (FRONT)	65115819		•	•	•	•	•															
0815	P.C.B. (MAIN)	65115782		•	•	•	•	•	•	•	•	•	•	•	•								
0820	PUSH BUTTON (R.H.SIDE)	65153181		•	•	•	•	•	•	•	•	•	•	•	•								
0821	PUSH BUTTON (L.H.SIDE)	65153180		•	•	•	•	•	•	•	•	•	•	•	•								
0824	CONTROL PANEL COVER (REAR)	65115820		•	•	•	•	•	•	•	•	•	•	•	•								
0825	PRESSURE GAUGE	65114200		•	•	•	•	•	•	•	•	•	•	•	•								
0827	SUPPORT (PRESSURE GAUGE)	65115809		•	•	•	•	•	•	•	•	•	•	•	•								
0842	SIDE COVER SUPPORT	65115811		•	•	•	•	•	•	•	•	•	•	•	•								
0856	CABLE CLAMP	65103377		•	•	•	•	•	•	•	•	•	•	•	•								
0880	3-WAY VALVE CABLE	65115790		•	•	•	•	•	•	•	•	•	•	•	•								
	3-WAY VALVE CABLE	65115937													•	•							
	CABLE (IONIZATION ELECTRODE)	60001883		•	•	•	•	•	•	•	•	•	•	•	•								
	EARTH WIRE	65104286		•	•	•	•	•	•	•	•	•	•	•	•								
	FEEDER 240V	60001619		•	•	•	•	•	•	•	•	•	•	•	•								
	NTC - PRES SWITCH CABLE	65115789		•	•	•	•	•	•	•	•	•	•	•	•								
	PUMP 1V CABLE WILO	65105081	WILO	•	•	•	•	•	•	•	•	•	•	•	•								
0881	CONNECTOR 2P	65111933		•	•	•	•	•	•	•	•	•	•	•	•								
	CONNECTOR 3P (x5)	65111934-01		•	•	•	•	•	•	•	•	•	•	•	•								
0900	JIG PLATE & PIPE FITTING																						
0903	HOT WATER CONNECTION	60000891		•	•	•	•	•	•	•	•	•	•	•	•								
0904	GAS SERVICE TAP	60000898		•	•	•	•	•	•	•	•	•	•	•	•								
0905	COLD WATER TAP	60000894		•	•	•	•	•	•	•	•	•	•	•	•								
0906	WATER FLOW & RETURN SERVI. TAP	60000885		•	•	•	•	•	•	•	•	•	•	•	•								
0910	WALL HOOK	60000625		•	•	•	•	•	•	•	•	•	•	•	•								
0917	SHEET GASKET D: 24-17-1.5	60061855-19		•	•	•	•	•	•	•	•	•	•	•	•								
0939	WASHER D: 18.4-12.2-1.5	60061855-14		•	•	•	•	•	•	•	•	•	•	•	•								
5000	ACCESSORIES																						

LIST OF THE ABBREVIATIONS

HW	: Hot water.
CW	: Cold water.
C	: Ceramic resistance (normal heating).
Ca	: Ceramic resistance (accelerated heating)
TP	: Immersion heater.
1F	: With fittings.
2F	: Without fittings.
3F	: With fittings and another outlet connection.
AMI	: With mixing valve.
SMI	: Without mixing valve.
PUISS	: Power of th appliance.
PN	: Appliance with normal pression.
LP	: Appliance with low pression.
PV	: Appliance with variable power.
PF	: Appliance with fixed power.

IDENTIFICATION PLATE

SERIAL NUMBER

10 Characters :	04 05 125 011	Sequential number Manufacturing day Year of manufacture
11 Characters :	1 95 065004 - 31	Technical number of the appliance Sequential number Year of manufacture
Month of manufacture : from 1 to 9 → Jan. to Sep., O → Oct., N → Nov., D → Dec.		
19 Characters :	08 05 0013199 900640031	Product reference Sequential number
Year of manufacture Month of manufacture		
20 Characters :	3675007 XX 2 07 070 00315	Sequential number Manufacturing day Year of manufacture
Product reference Millenium of manufacture		
21 Characters :	3675007 XX 07 070 0000315	Sequential number Manufacturing day
Product reference Year of manufacture		