



SPARE PARTS EXPLODED VIEW
GAS-WALL CONDENSING BOILERS
Model
EGIS PREMIUM S

R8203469-01 - 20/05/2016

EGIS PREMIUM S

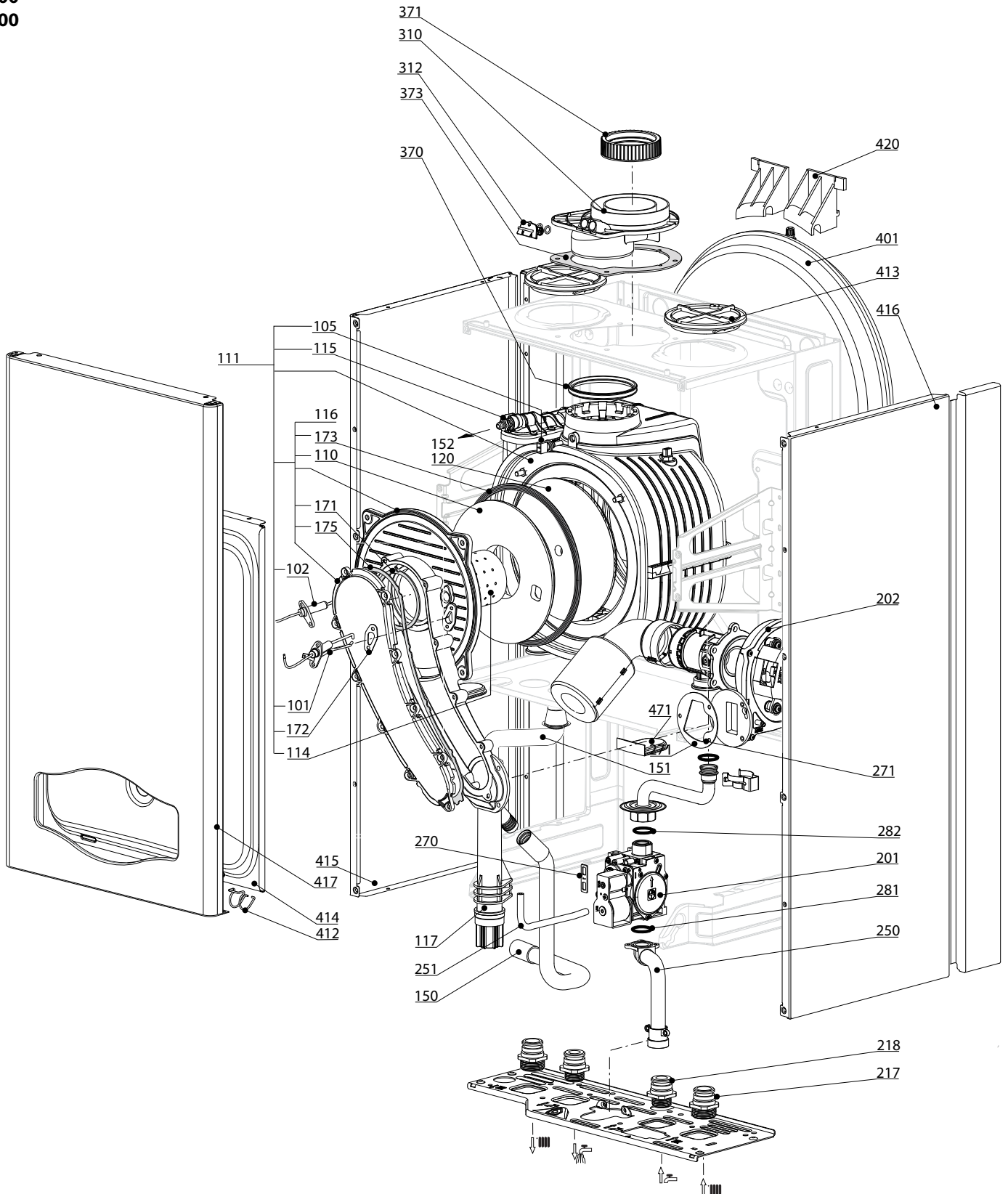
Gas-wall condensing boilers

1	3300767	EGIS PREMIUM S 24 GPL EU		
1	3300914	EGIS PREMIUM S 24 NG		
Col	Reference	Model type	Begin	End

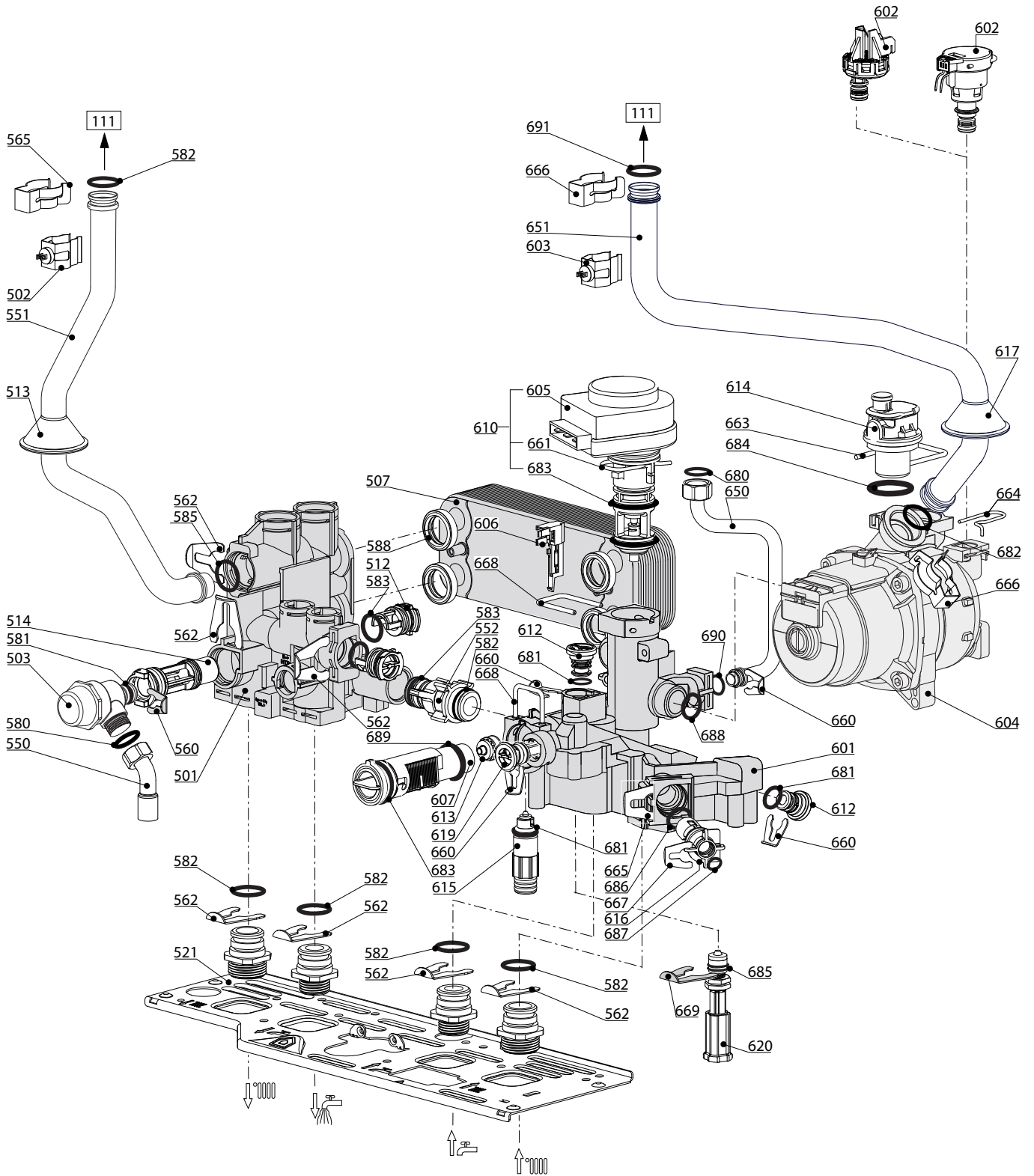
100
200
300
400

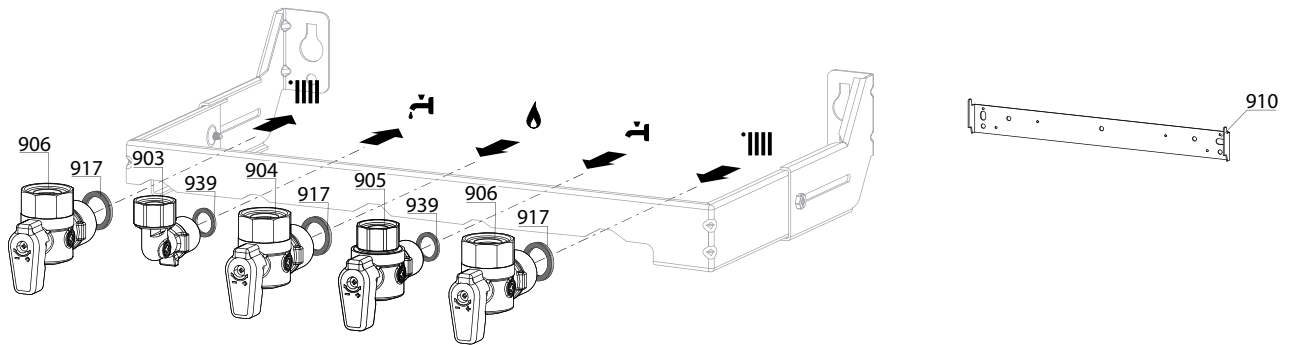
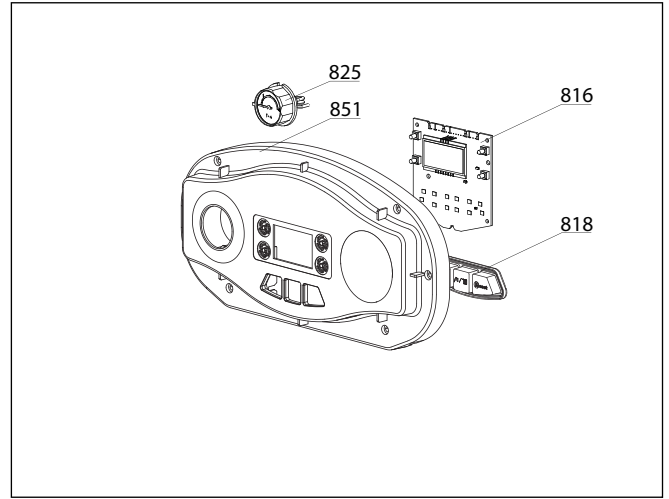
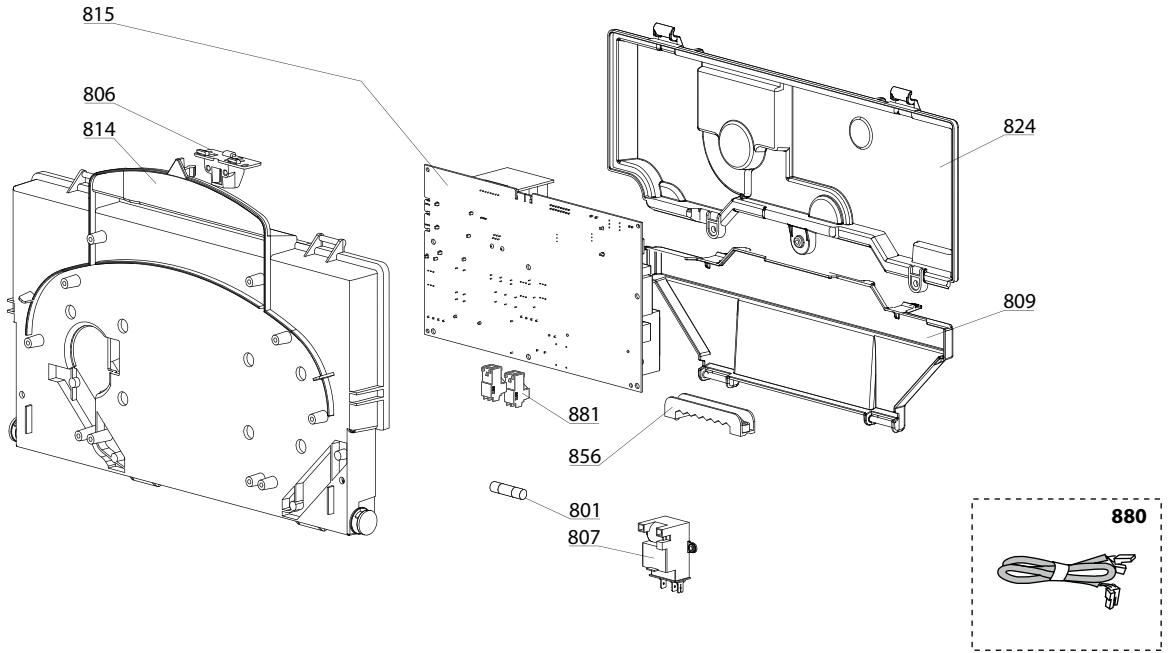
EGIS PREMIUM S

Gas-wall condensing boilers



<p>Mixer AL* (2012 -> 2016)</p> <p>211 208 282 213 282</p>	<p>Mixer PA* (2016 -> ...)</p> <p>211 286 209 261 283 282</p>
<p>* Aluminum - Aluminium - Alluminio - Aluminio</p>	<p>* Polyamide black, noir - Poliammide nero - Poliamida negro</p>





5001
 Transf. gaz
 Conv. gas
 Trsf. gas
 Transf. gas
 > **G31**
 (LPG - GPL)

5002
 Transf. gaz
 Conv. gas
 Trsf. gas
 Transf. gas
 > **G20**
 (NAT - MET)

5020
 Options
 Accessories
 Opzioni
 Accessorio

LIST OF THE ABBREVIATIONS

HW	: Hot water.
CW	: Cold water.
C	: Ceramic resistance (normal heating).
Ca	: Ceramic resistance (accelerated heating)
TP	: Immersion heater.
1F	: With fittings.
2F	: Without fittings.
3F	: With fittings and another outlet connection.
AMI	: With mixing valve.
SMI	: Without mixing valve.
PUISS	: Power of th appliance.
PN	: Appliance with normal pression.
LP	: Appliance with low pression.
PV	: Appliance with variable power.
PF	: Appliance with fixed power.

IDENTIFICATION PLATE

SERIAL NUMBER

10 Characters :

04 05 125 011
 Year of manufacture Manufacturing day Sequential number

11 Characters :

1 95 065004 - 31
 Month of manufacture : Technical number of the appliance
 from 1 to 9 → Jan. to Sep.,
 O → Oct., N → Nov.,
 D → Dec. Sequential number
 Year of manufacture

19 Characters :

08 05 0013199 900640031
 Year of manufacture Product reference
 Month of manufacture Sequential number

20 Characters :

3675007 XX 2 07 070 00315
 Product reference Sequential number
 Millenium of manufacture Manufacturing day
 Year of manufacture

21 Characters :

3675007 XX 07 070 0000315
 Product reference Sequential number
 Year of manufacture Manufacturing day