

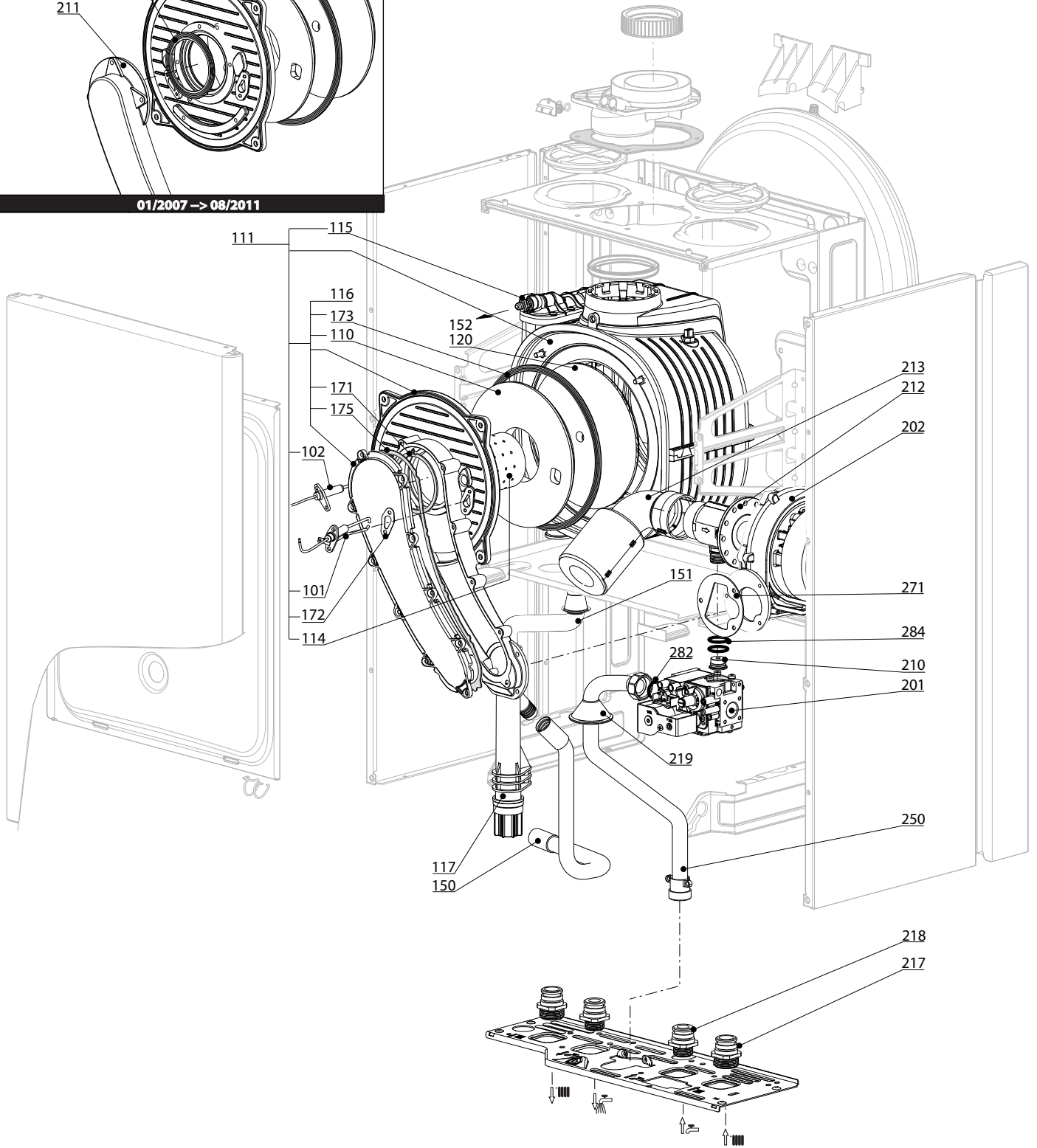
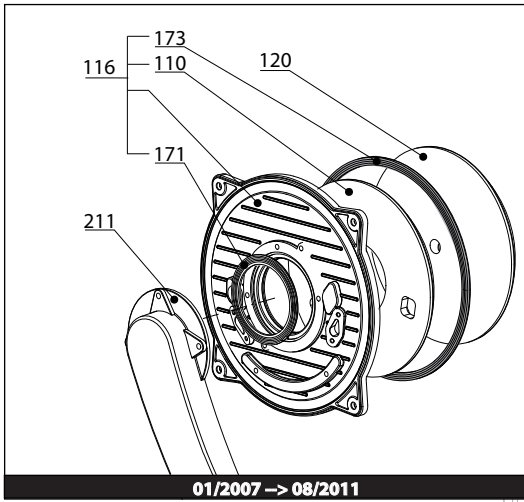


SPARE PARTS EXPLODED VIEW GAS-WALL CONDENSING BOILERS Model GENUS PREMIUM - CLAS PREMIUM

R8203212-04 - 22/01/2016

1	3665012	GENUS PREMIUM 24 NG IT_A	12-2006	05-2009
1	3665059	GENUS PREMIUM 24 LPG (IT)	03-2007	07-2009
1	3665065	GENUS PREMIUM 24 NG PI	03-2007	08-2009
1	3665063	GENUS PREMIUM 24 LPG (PI)	03-2007	08-2009
1	3665036	GENUS PREMIUM 24 NG (EAA1)	04-2007	11-2009
1	3665039	GENUS PREMIUM 24 NG (EAA2)	05-2007	12-2009
1	3300324	GENUS PREMIUM 24 NG	06-2009	05-2013
1	3300290	GENUS PREMIUM SOLAR 25 N (IT-PI)	04-2009	07-2013
2	3665013	GENUS PREMIUM 30 NG IT_A	12-2006	05-2009
2	3665060	GENUS PREMIUM 30 LPG (IT)	04-2007	07-2009
2	3665066	GENUS PREMIUM 30 NG PI	03-2007	08-2009
2	3665064	GENUS PREMIUM 30 LPG (PI)	03-2007	11-2007
2	3665037	GENUS PREMIUM 30 NG (EAA1)	04-2007	09-2007
2	3665040	GENUS PREMIUM 30 NG (EAA2)	05-2007	12-2009
2	3300325	GENUS PREMIUM 30 NG	06-2009	05-2013
3	3665014	GENUS PREMIUM 35 NG IT_A	12-2006	05-2009
3	3665069	GENUS PREMIUM 35 LPG (IT)	04-2007	07-2009
3	3665067	GENUS PREMIUM 35 NG PI	03-2007	08-2009
3	3665068	GENUS PREMIUM 35 LPG (PI)	03-2007	06-2007
3	3665038	GENUS PREMIUM 35 NG (EAA1)	04-2007	12-2009
3	3665041	GENUS PREMIUM 35 NG (EAA2)	05-2007	12-2009
3	3300326	GENUS PREMIUM 35 NG	06-2009	05-2013
4	3665095	GENUS PREMIUM SYSTEM 12 MET IT	06-2008	05-2009
4	3665115	GENUS PREMIUM SYSTEM 12 NG EAA1	01-2009	11-2009
4	3300327	GENUS PREMIUM SYSTEM 12 NG	06-2009	05-2013
4	3300291	GENUS PREMIUM SYSTEM SOLAR 12 N (IT-PI)	05-2009	07-2013
5	3665096	GENUS PREMIUM SYSTEM 18 MET IT	06-2008	05-2009
5	3665116	GENUS PREMIUM SYSTEM 18 NG EAA1	01-2009	11-2009
5	3300328	GENUS PREMIUM SYSTEM 18 NG	06-2009	05-2013
6	3665042	GENUS PREMIUM SYSTEM 24 NG (IT)	05-2007	05-2009
6	3665061	GENUS PREMIUM SYSTEM 24 LPG (IT)	04-2007	07-2009
6	3665044	GENUS PREMIUM SYSTEM 24 NG (EAA1)	06-2007	12-2009
6	3665046	GENUS PREMIUM SYSTEM 24 NG (EAA2)	06-2007	07-2007
6	3300329	GENUS PREMIUM SYSTEM 24 NG	06-2009	05-2013
7	3665043	GENUS PREMIUM SYSTEM 30 NG (IT)	04-2007	05-2009
7	3665090	GENUS PREMIUM SYSTEM 30 NG PI	06-2008	08-2009
7	3665062	GENUS PREMIUM SYSTEM 30 LPG (IT)	04-2007	09-2007
7	3665045	GENUS PREMIUM SYSTEM 30 NG (EAA1)	05-2007	10-2007
7	3665047	GENUS PREMIUM SYSTEM 30 NG (EAA2)	05-2007	09-2011
7	3300333	GENUS PREMIUM SYSTEM 30 NG	06-2009	05-2013
8	3300437	GENUS PREMIUM SYSTEM 35 NG	07-2011	05-2013
9	3665048	CLAS PREMIUM 24 NG (IT)	04-2007	06-2009
9	3665091	CLAS PREMIUM 24 NG (PI)	03-2008	10-2009
9	3665049	CLAS PREMIUM 24 LPG (IT)	07-2007	07-2009
9	3665076	CLAS PREMIUM 24 NG (EAA1)	10-2007	12-2009
9	3665078	CLAS PREMIUM 24 NG (EAA2)	11-2007	12-2009
9	3300330	CLAS PREMIUM 24 NG	06-2009	05-2013
10	3665050	CLAS PREMIUM 30 NG (IT)	04-2007	06-2009
10	3665051	CLAS PREMIUM 30 LPG (IT)	09-2007	07-2009
10	3665077	CLAS PREMIUM 30 NG (EAA1)	11-2007	11-2009
10	3665079	CLAS PREMIUM 30 NG (EAA1)	11-2007	11-2007
10	3300332	CLAS PREMIUM 30 NG	06-2009	05-2013
11	3665117	CLAS PREMIUM SYSTEM 24 KW EAA1	01-2009	09-2009

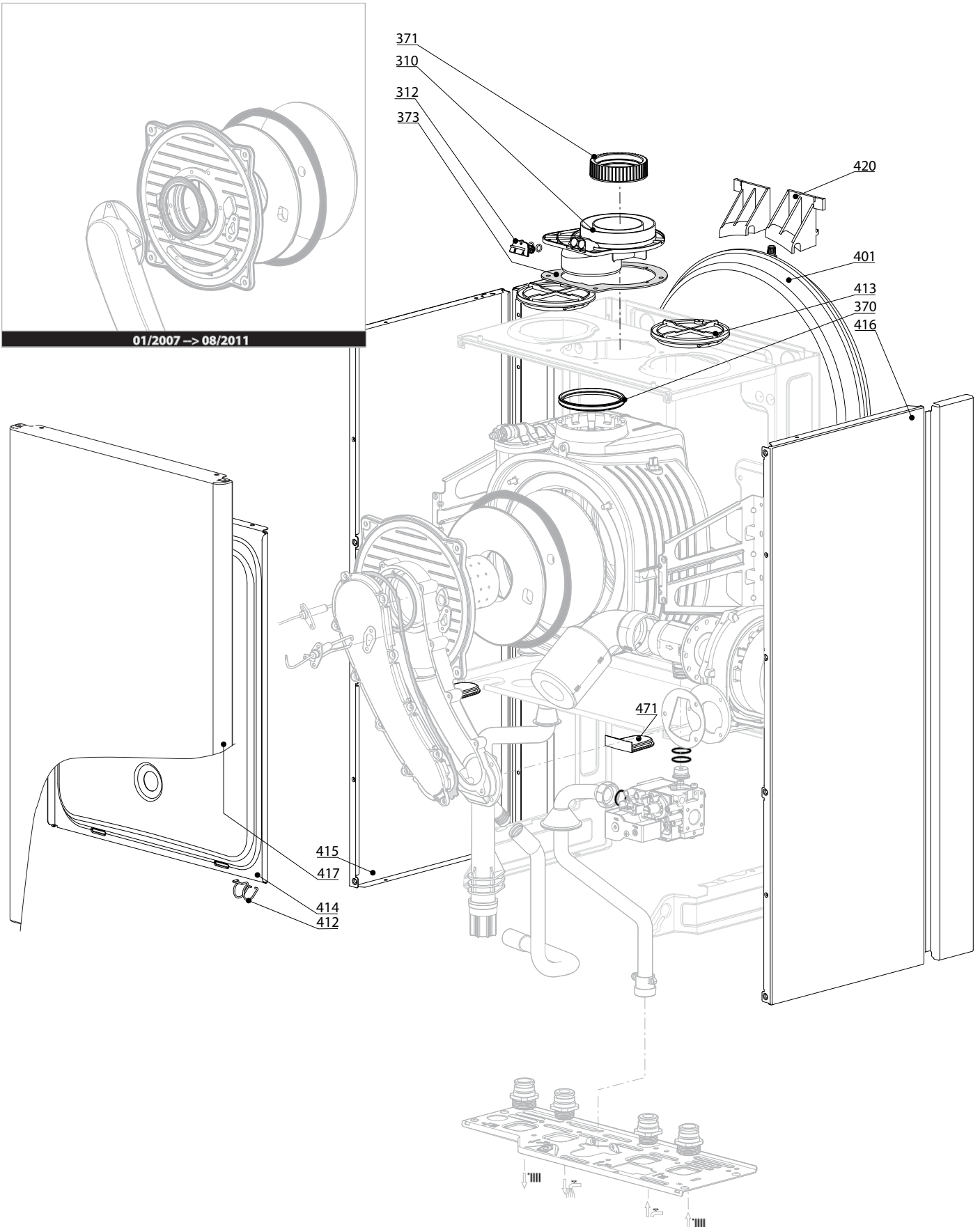
Col	Reference	Model type	Begin	End
-----	-----------	------------	-------	-----

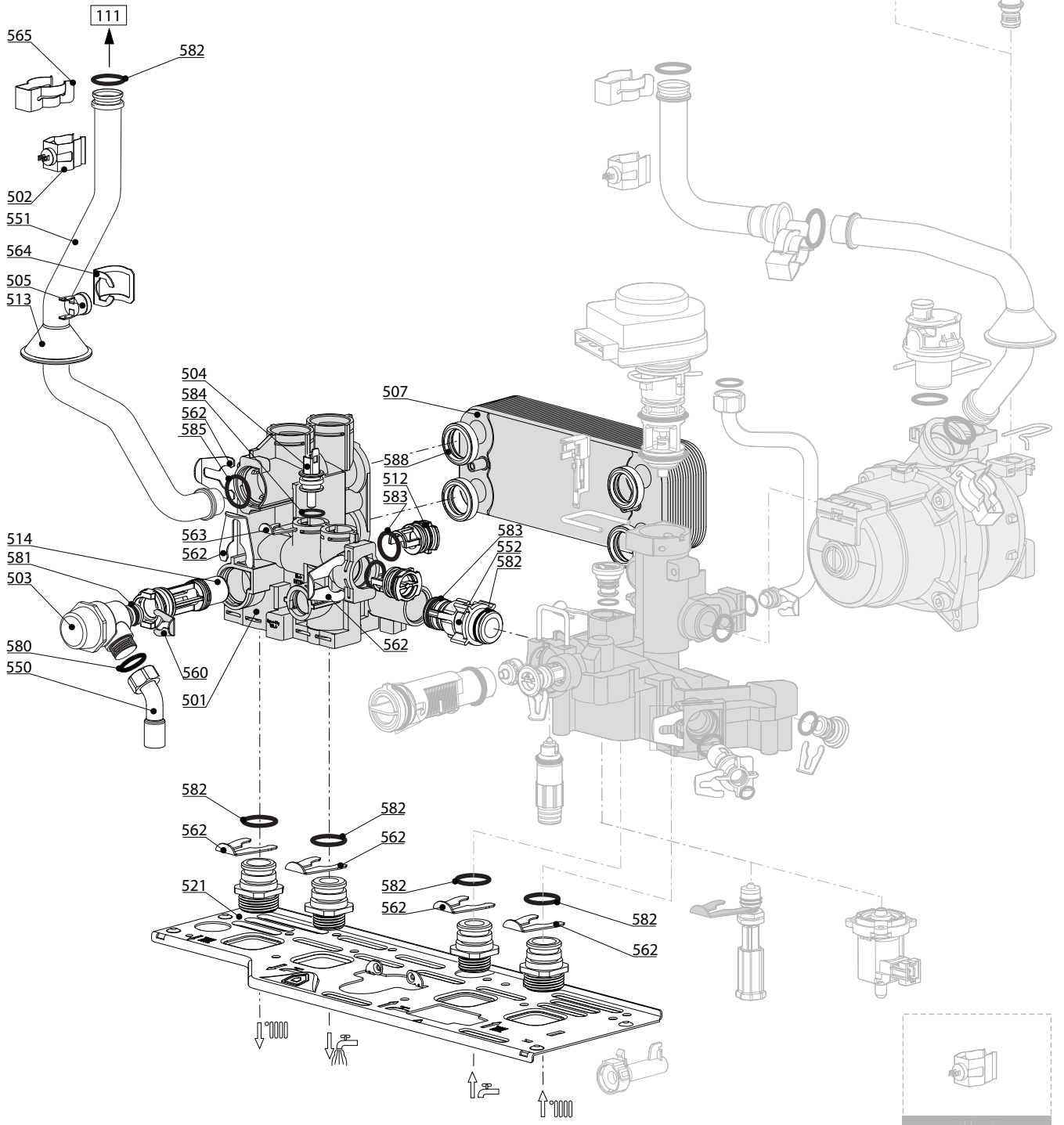
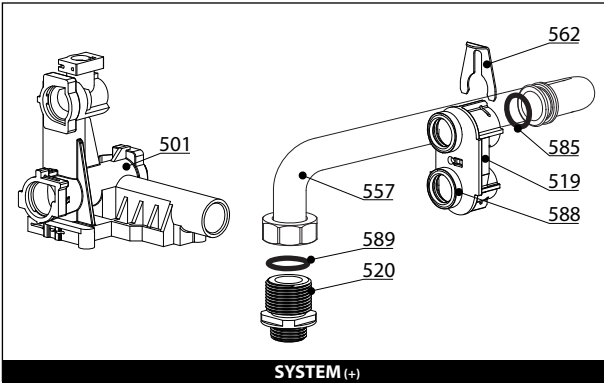


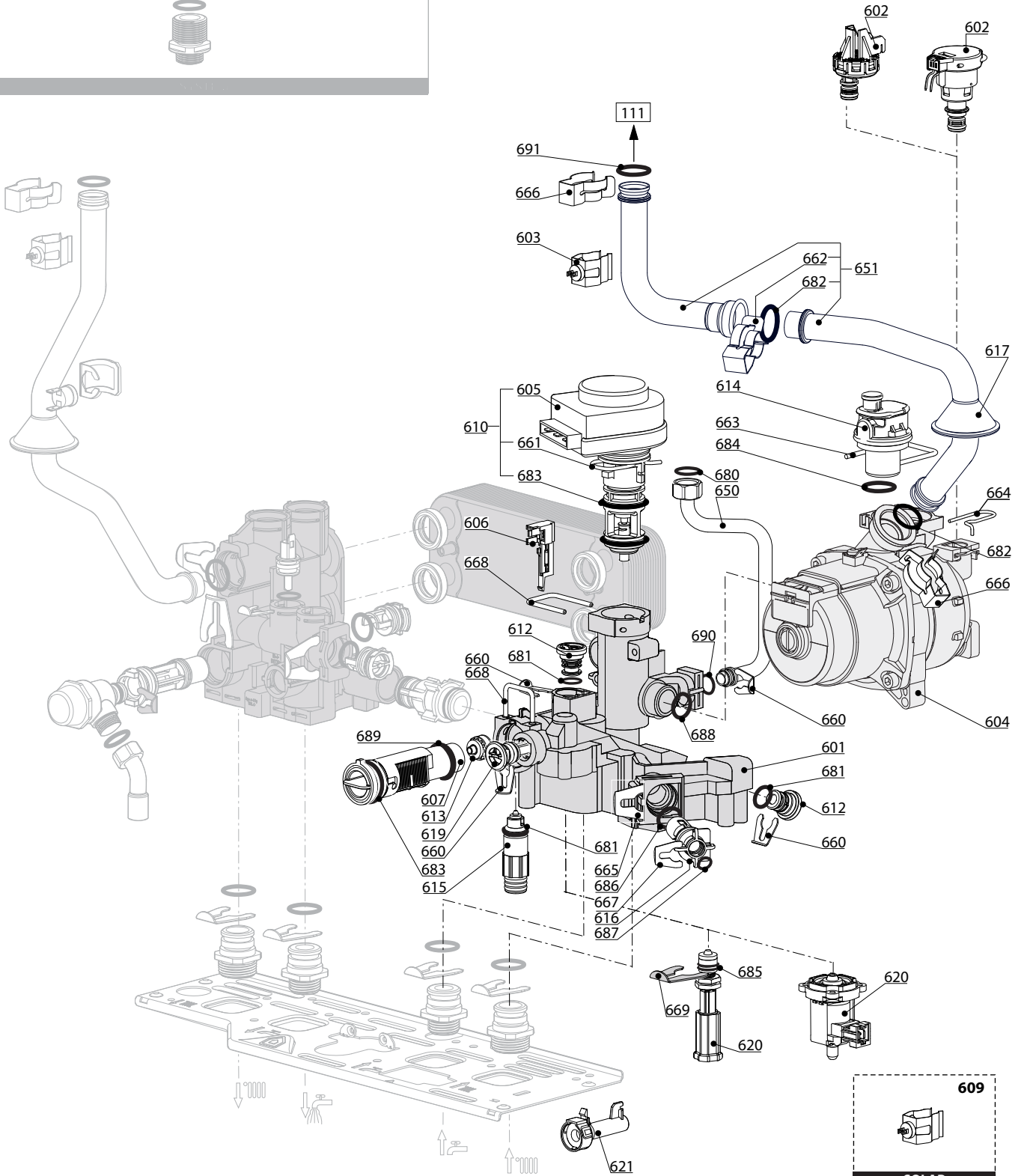
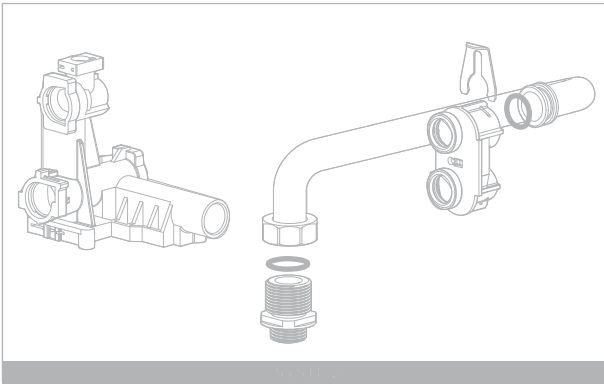
300
400

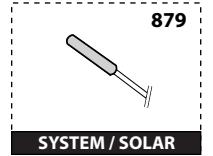
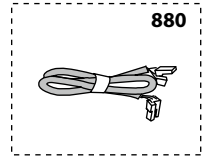
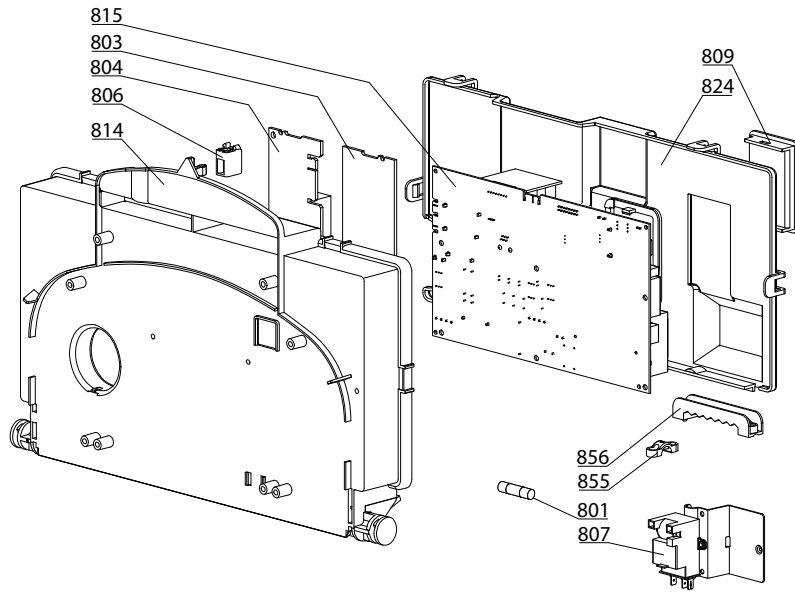
GENUS PREMIUM - CLAS PREMIUM

Gas-wall condensing boilers

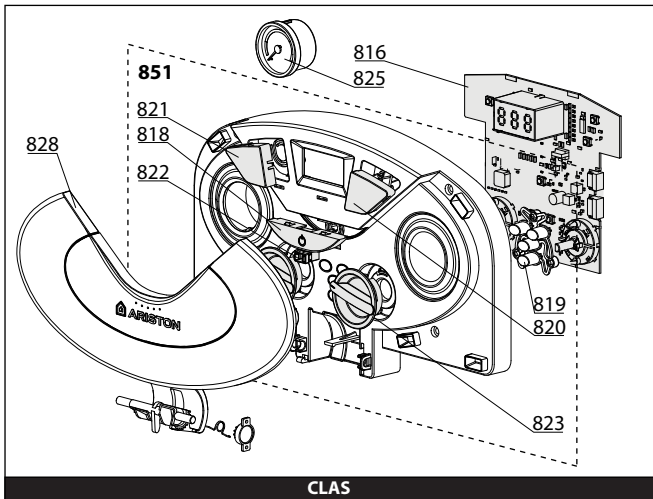




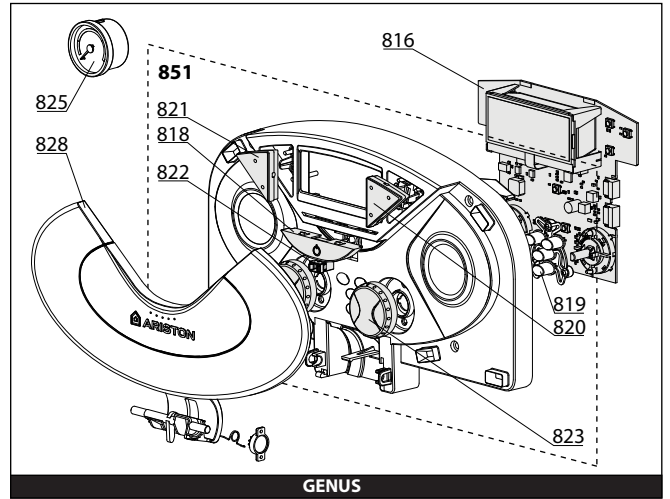




SYSTEM / SOLAR

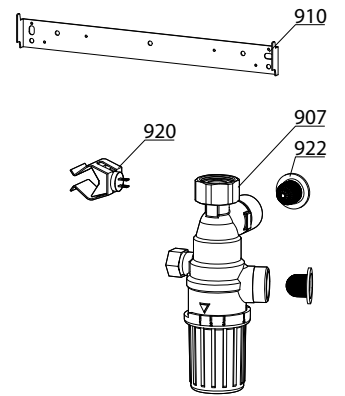
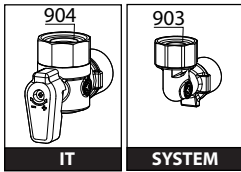
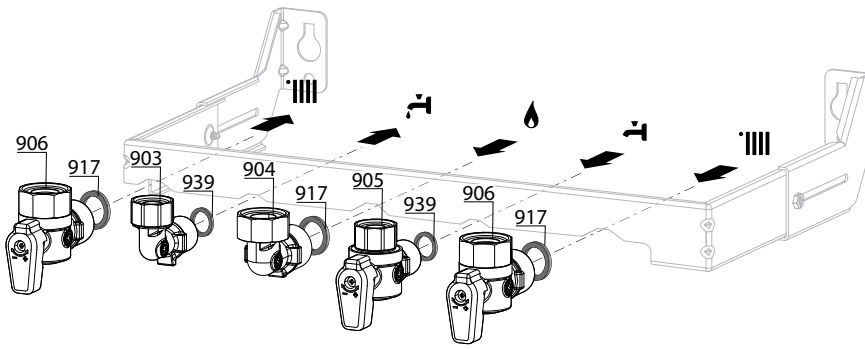


CLAS



GENUS

900



5000

- | | | |
|---|---|---|
| <p>5001</p> <p>Transf. gaz > GPL
 Conv. gas > GPL
 Trasn. gas > GPL
 Transf. gas > GPL</p> | <p>5002</p> <p>Transf. gaz > Nat
 Conv. gas > Nat
 Trasn. gas > Met
 Transf. gas > Met</p> | <p>5020</p> <p>Options
 Accessories
 Opzioni
 Accessorio</p> |
|---|---|---|

☉⇒	Description	Manf. Pt. N	Type	GENUS PREMIUM 24 GENUS PREMIUM 30 GENUS PREMIUM 35 GENUS PREMIUM SYS. 12 GENUS PREMIUM SYS. 18 GENUS PREMIUM SYS. 24 CLAS PREMIUM SYS. 30 CLAS PREMIUM 24 CLAS PREMIUM 30																		From	to
				1	2	3	4	5	6	7	8	9	10	11	12	13	14	15	16	17	18		
0900	JIG PLATE & PIPE FITTING																						
0903	HOT WATER CONNECTION	60000891		•	•	•					•	•											
0904	GAS SERVICE TAP	60000898		•	•	•	•	•	•	•	•	•	•	•	•	•	•	•	•				
	UNION	65105631		•	•	•	•	•	•	•	•	•	•	•	•	•	•	•	•				
0905	COLD WATER TAP	60000895		•	•	•	•	•	•	•	•	•	•	•	•	•	•	•	•				
0906	WATER FLOW & RETURN SERVI. TAP	60000885		•	•	•	•	•	•	•	•	•	•	•	•	•	•	•	•				
0907	THERMOSTATIC MIXING VALVE	60001081		•	•	•	•	•	•	•	•	•	•	•	•	•	•	•	•				
0910	WALL HOOK	60000625		•			•	•	•			•							•				
	WALL HOOK	60000852			•	•				•	•								•				
0917	SHEET GASKET D: 24-17-1.5	60061855-19		•	•	•	•	•	•	•	•	•	•	•	•	•	•	•	•				
0920	TEMPERATURE PROBE + CLIP	65105079		•	•	•	•	•	•	•	•	•	•	•	•	•	•	•	•				
0922	FILTER	60001087		•	•	•	•	•	•	•	•	•	•	•	•	•	•	•	•				
0939	SHEET GASKET D: 16.5-11-1.5	60061854-14		•	•	•	•	•	•	•	•	•	•	•	•	•	•	•	•				
5000	ACCESSORIES																						
5001	BURNER JET FULL KIT (LPG)	60000752		•				•	•			•							•				
	BURNER JET FULL KIT (LPG)	60000753			•					•	•								•				
	BURNER JET FULL KIT (LPG)	60000754				•																	
	BURNER JET FULL KIT (LPG)	60001126					•																
5002	BURNER JET FULL KIT (NG)	60001127					•																
5020	AIR RETURN MANIFOLD	65104710		•	•	•	•	•	•	•	•	•	•	•	•	•	•	•	•				
	CLEANING KIT CONDENSATION	60000982		•	•	•	•	•	•	•	•	•	•	•	•	•	•	•	•				
	ROD PLATE	60000626		•			•	•	•			•							•				

LIST OF THE ABBREVIATIONS

HW	: Hot water.
CW	: Cold water.
C	: Ceramic resistance (normal heating).
Ca	: Ceramic resistance (accelerated heating)
TP	: Immersion heater.
1F	: With fittings.
2F	: Without fittings.
3F	: With fittings and another outlet connection.
AMI	: With mixing valve.
SMI	: Without mixing valve.
PUISS	: Power of th appliance.
PN	: Appliance with normal pression.
LP	: Appliance with low pression.
PV	: Appliance with variable power.
PF	: Appliance with fixed power.

IDENTIFICATION PLATE

SERIAL NUMBER

10 Characters :	04 05 125 011	Sequential number Manufacturing day Year of manufacture
11 Characters :	1 95 065004 - 31	Technical number of the appliance Sequential number Year of manufacture
Month of manufacture : from 1 to 9 → Jan. to Sep., O → Oct., N → Nov., D → Dec.		
19 Characters :	08 05 0013199 900640031	Product reference Sequential number
Year of manufacture Month of manufacture		
20 Characters :	3675007 XX 2 07 070 00315	Sequential number Manufacturing day Year of manufacture
Product reference Millenium of manufacture		
21 Characters :	3675007 XX 07 070 0000315	Sequential number Manufacturing day
Product reference Year of manufacture		