



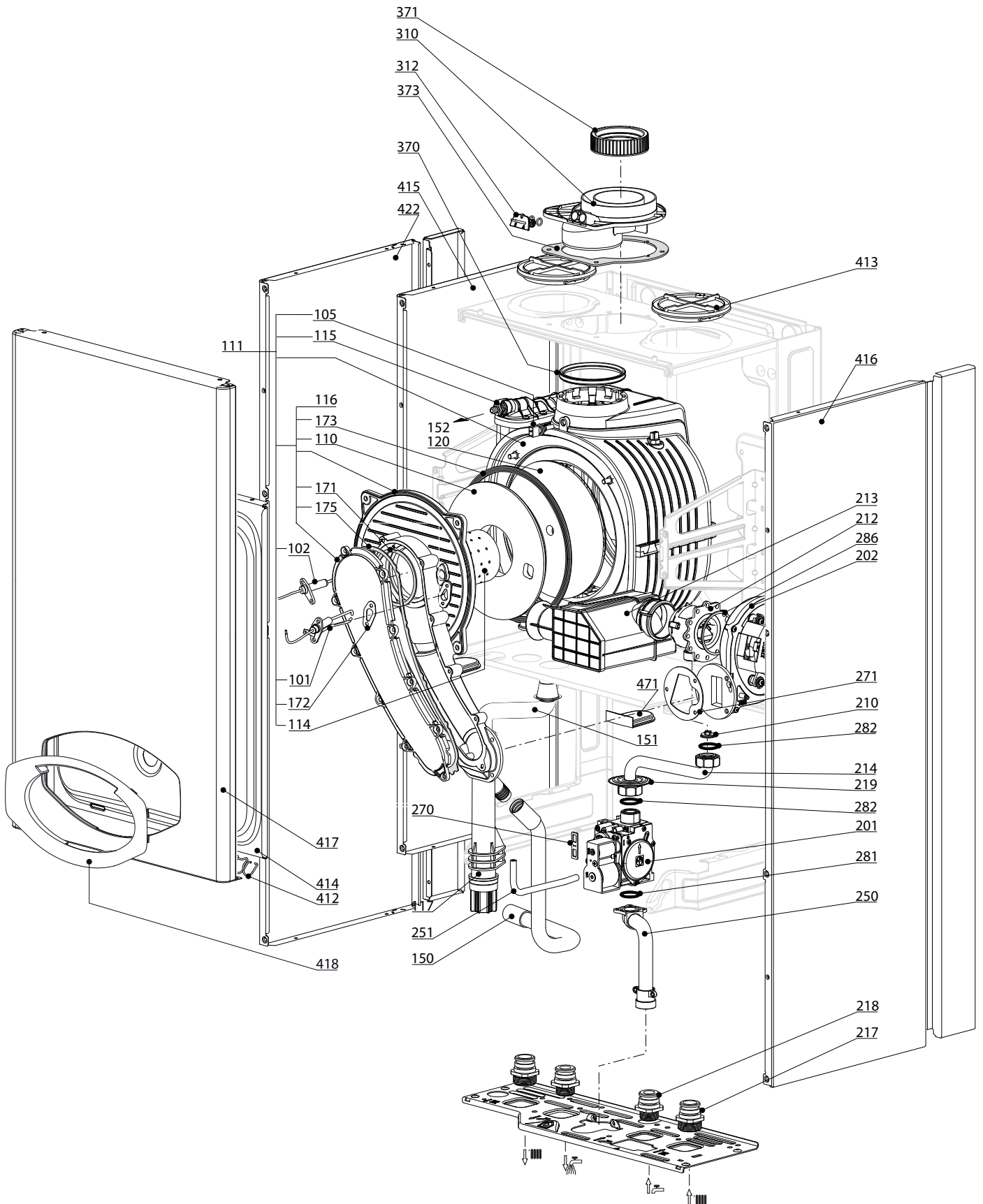
SPARE PARTS EXPLODED VIEW
GAS-WALL CONDENSING BOILERS

Model

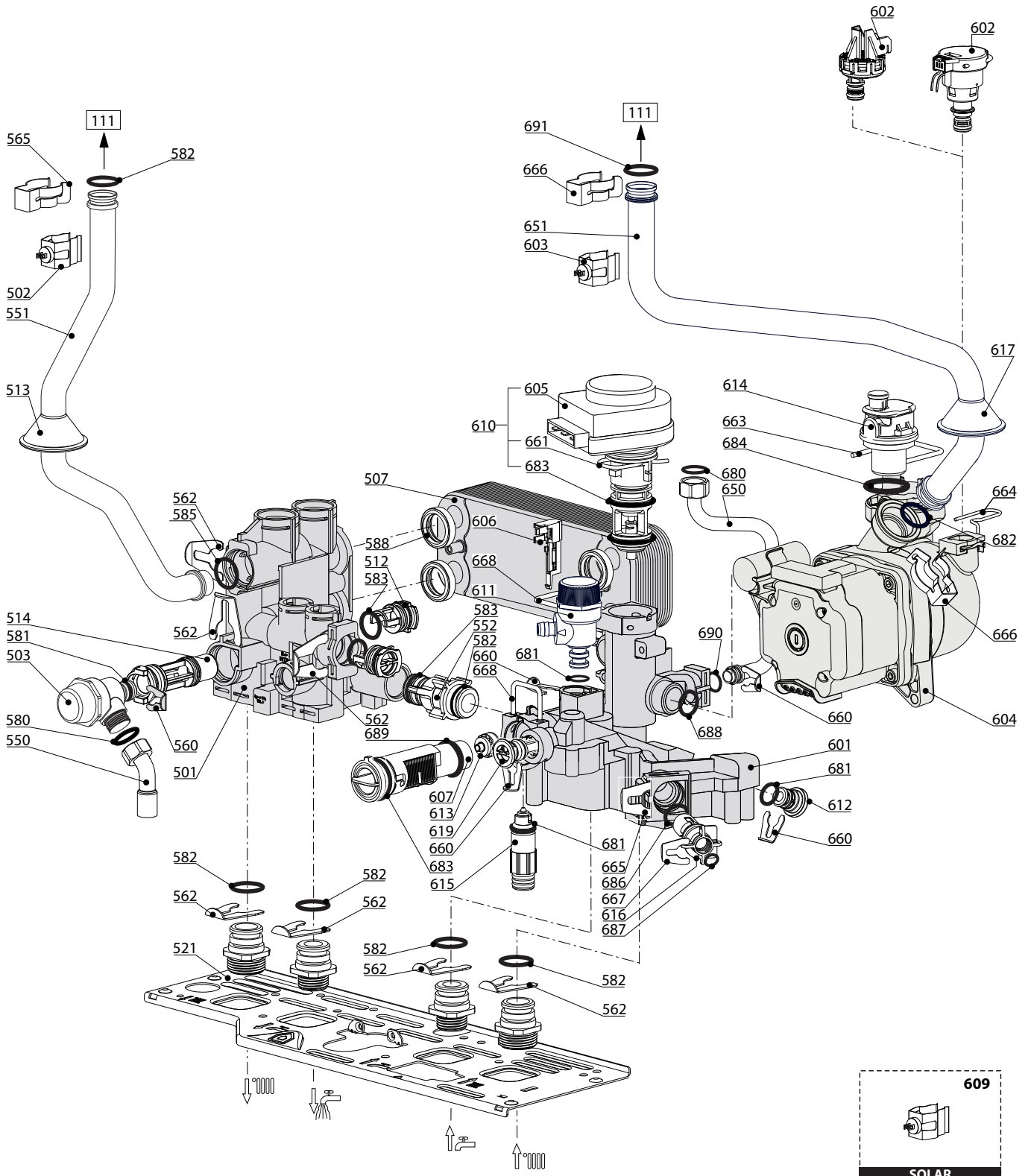
CLAS B PREMIUM EVO

R8203439-01 - 28/07/2015

1	3300608	CLAS B PREMIUM EVO 24 EU		
2	3300609	CLAS B PREMIUM EVO 35 EU		
Col	Reference	Model type	Begin	End



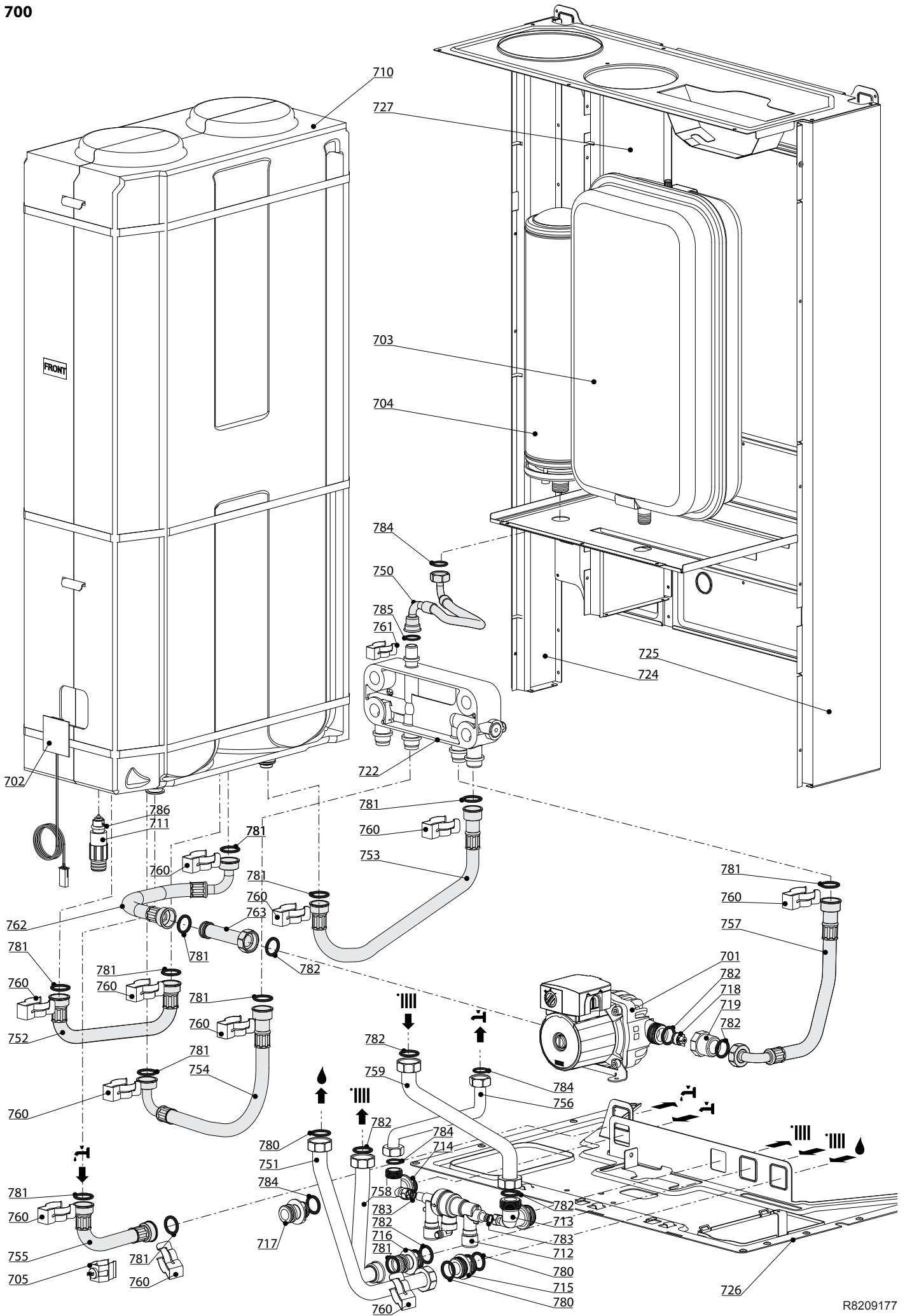
☺	Description	Manf. Pt. N	Type	CLAS B PREM EVO 24 CLAS B PREM EVO 35																		From	to
				1	2	3	4	5	6	7	8	9	10	11	12	13	14	15	16	17	18		
	0100 BURNER ASSEMBLY																						
	0101 IGNITION ELECTRODE	60000868-01		●	●																		
	0102 IONIZATION ELECTRODE	60000867-01		●	●																		
	0110 INSULATION (FRONT PANEL)	60000297		●	●																		
	0111 HEAT EXCHANGER (18/24KW)	65111608		●																			
	HEAT EXCHANGER (35KW)	65111607		●																			
	0114 BURNER 18/24KW	60000288-01		●																			
	BURNER 35KW	60001913		●																			
	0115 AIR SEPARATOR	60000994		●	●																		
	0116 DOOR ASSY	65111604		●	●																		
	0117 TRAP	60000987		●	●																		
	0120 PANEL (INSULATION - REAR)	65114477		●	●																		
	0150 TUBE PVC D:19 L:500	60000976		●	●																		
	0151 OUTGOING CONDENSATION TUBE	60001929		●	●																		
	0152 SILICONE TUBE D: 8x1 L: 0.15M	60001013		●	●																		
	0171 GASKET D:80.6-1.8	60001610		●	●																		
	0172 GASKET (IGNITION ELECTRODE)	60000286-01		●	●																		
	0173 DOOR GASKET	60000623		●	●																		
	0175 GASKET	60001609		●	●																		
	0200 GAS SECTION																						
	0201 GAS VALVE	60001612		●	●																		
	0202 FAN ASSY	60001869		●	●																		
	0210 GAS RESTRICTOR D: 5.00	60001921		●																			
	GAS RESTRICTOR D: 6.60	60001922		●																			
	0212 VENTURI D: 17MM	60001941		●																			
	VENTURI D: 25MM	60001942		●																			
	0213 SILENCER	65111609		●	●																		
	0214 GAS TUBE 24 KW	60001937		●																			
	GAS TUBE 35 KW	60001939		●																			
	0217 UNION (3/4»)	65104326		●	●																		
	0218 UNION (1/2»)	65104327		●	●																		
	0219 GROMMET	61010109		●	●																		
	0250 GAS TUBE	60000720		●	●																		
	0251 SILICONE PIPE	60001613		●	●																		
	0270 GASKET (SPARK GENERATOR)	574279		●	●																		
	0271 GASKET	60001931		●	●																		
	0281 O-RING 22.22X2.62	65104304		●	●																		
	0282 SHEET GASKET D: 24-18.2-1.5	60022835-01		●	●																		
	0286 GASKET	60001878		●																			
	0300 FAN ASSEMBLY																						
	0310 FLUE (EXHAUST MANIFOLD/HEADER)	60000523		●	●																		
	0312 FLUE INTAKE PLUG	65104295		●	●																		
	0370 SEALING RING 80mm	60000315		●	●																		
	0371 GASKET	60000316		●	●																		
	0373 GASKET	60000317		●	●																		
	0400 SEALED CASE																						
	0412 SPRING FRONT PANEL (KIT)	65104298		●	●																		
	0413 AIR RETURN COVER	65104249		●	●																		
	0414 PANEL (FRONT - SEALED CHAMBER)	65105678-01		●	●																		
	0415 CASE PANEL (L.H. SIDE)	65105676		●																			
	LEFT HAND PANEL	60000980		●																			
	0416 HAND PANEL	60001244		●																			
	RIGHT SIDE PANEL	60001245		●																			
	0417 CASE PANEL (FRONT)	60001345		●	●																		
	0418 FACIA	60001354		●	●																		
	0422 HAND PANEL	60001244		●	●																		
	0470 CABLE INLET RUBBER WASHER	60000540		●	●																		
	0471 CABLE INLET RUBBER WASHER	60000541		●	●																		

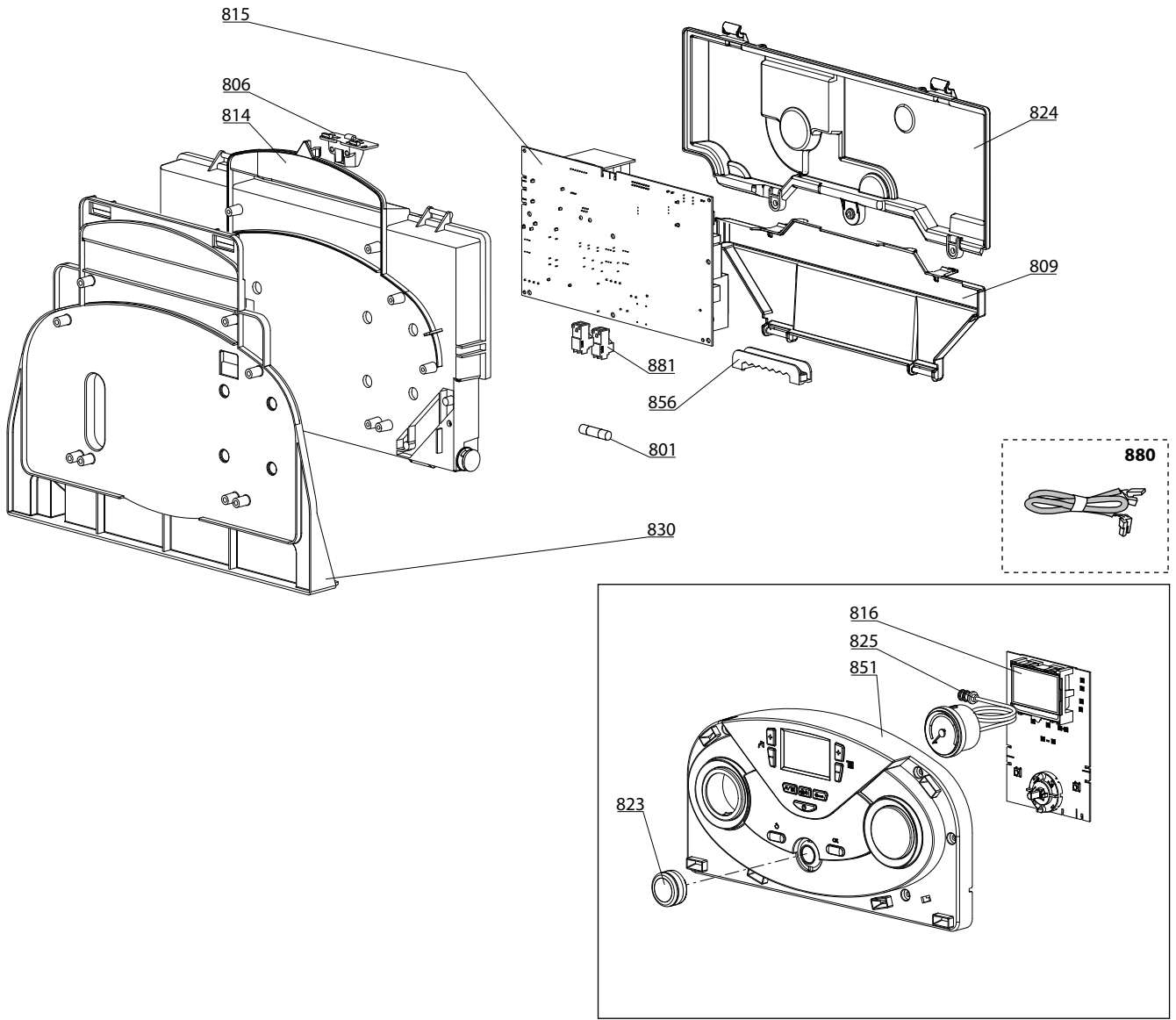


CLAS B PREMIUM EVO 24
CLAS B PREMIUM EVO 35

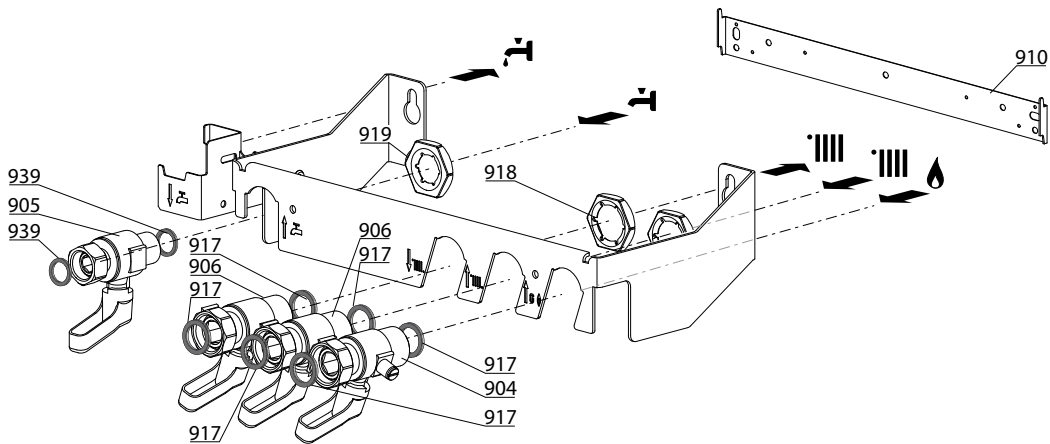
31

Description	Manf. Pt. N	Type	CLAS B PREMIUM EVO 24 CLAS B PREMIUM EVO 35																		From	to
			1	2	3	4	5	6	7	8	9	10	11	12	13	14	15	16	17	18		
0500 FLOW GROUP																						
0501 FLOW GROUP KIT	60002319			●	●																	
0502 TEMPERATURE PROBE + CLIP KIT	990686-01			●	●																	
0503 PRESSURE RELIEF VALVE (3 BAR)	61312668			●	●																	
0507 SANITARY HEAT EXCHANGER (16 P.)	65104333			●	●																	
0512 PLUG	65104445			●	●																	
0513 GROMMET	61010109			●	●																	
0514 BY-PASS	65104336			●	●																	
0521 HYDRAULIC GROUP SUPPORT	60001375			●	●																	
0550 PIPE (SAFETY VALVE)	65104447			●	●																	
0551 PIPE (C.H. FLOW)	60000859			●																		
PIPE (C.H. FLOW)	60000981				●																	
0552 BY-PASS PIPE	65104340			●	●																	
0560 CLIP D:10	65104260			●	●																	
0562 CLIP D:18	65104259			●	●																	
0565 CLIP	60000309			●	●																	
0580 SHEET GASKET D: 13.9-10.4-1.5	60061853-02			●	●																	
0581 O-RING 17.96X2.62	65104337			●	●																	
0582 O-RING 17.86X2.62	61308091			●	●																	
0583 O-RING 15.54X2.62	65104325			●	●																	
0585 O-RING 17.04X3.53	65104262			●	●																	
0588 EXCHANGER GASKET	65104334			●	●																	
0600 RETURN GROUP																						
0601 RETURN GROUP	60000874			●	●																	
0602 LOW PRESSURE SWITCH	65105090			●	●																	
0603 TEMPERATURE PROBE + CLIP KIT	990686-01			●	●																	
0604 PUMP 5M PWM ENER+	60001947	ENER +		●	●																	
0605 MOTOR (3-WAY VALVE)	61302483-01			●	●																	
0606 SENSOR (REED)	65104323			●	●																	
0607 FLOW METER	60000870			●	●																	
0609 TEMPERATURE PROBE + CLIP	65105079			●	●																	
0610 MOTOR + SPRING 3 WAY VALVE KIT	60001583			●	●																	
0611 PRESSURE RELIEF VALVE (7 BAR)	60000171			●	●																	
0612 PLUG	65104377			●	●																	
0613 RIDUCTORS (KIT)	65104318			●	●																	
0614 AUTO AIR VENT ENER+	65112086	ENER +		●	●																	
0615 KIT DRAIN SCREW	60001385			●	●																	
0616 WATER FILTER	60001372			●	●																	
0617 GROMMET	61010109			●	●																	
0619 PLUG	65104377			●	●																	
0650 PIPE (EXPANSION VESSEL)	60001247			●	●																	
0651 PIPE (C.H. RETURN)	60000857			●	●																	
0660 CLIP D:10	65104260			●	●																	
0661 CLIP	65104332			●	●																	
0663 U-CLIP	65104704			●	●																	
0664 CLIP	65104322			●	●																	
0665 CLIP	65104331			●	●																	
0666 CLIP	60000309			●	●																	
0667 CLIP	65100680			●	●																	
0668 CLIP	65104316			●	●																	
0680 GASKET 3/8»	573521			●	●																	
0681 O-RING 9.19X2.62	65104313			●	●																	
0682 O-RING 17.04X3.53	65104262			●	●																	
0683 O-RING 23.47X2.62	65104315			●	●																	
0684 O-RING 3X35 EPDM 75 SH	65104705			●	●																	
0686 O-RING 15.54X2.62	65104325			●	●																	
0687 O-RING 5.7X1.9	61009834-10			●	●																	
0688 O-RING 21.89X2.62	65104320			●	●																	
0689 O-RING 17.17X1.78	65104303			●	●																	
0690 O-RING 8.9X2.7	61009834-14			●	●																	
0691 O-RING 17.86X2.62	61308091			●	●																	





900



5000

<p>5001 Transf. gaz > GPL Conv. gas > GPL Trasn. gas > GPL Transf. gas > GPL</p>	<p>5002 Transf. gaz > Nat Conv. gas > Nat Trasn. gas > Met Transf. gas > Met</p>	<p>5020 Options Accessories Opzioni Accessorio</p>
---	---	---

LIST OF THE ABBREVIATIONS

HW	: Hot water.
CW	: Cold water.
C	: Ceramic resistance (normal heating).
Ca	: Ceramic resistance (accelerated heating)
TP	: Immersion heater.
1F	: With fittings.
2F	: Without fittings.
3F	: With fittings and another outlet connection.
AMI	: With mixing valve.
SMI	: Without mixing valve.
PUISS	: Power of th appliance.
PN	: Appliance with normal pression.
LP	: Appliance with low pression.
PV	: Appliance with variable power.
PF	: Appliance with fixed power.

IDENTIFICATION PLATE

SERIAL NUMBER

10 Characters :	04 05 125 011		
		Sequential number	
		Manufacturing day	
		Year of manufacture	
11 Characters :	1 95 065004 - 31		
Month of manufacture :		Technical number of the appliance	
from 1 to 9 → Jan. to Sep.,		Sequential number	
O → Oct., N → Nov.,		Year of manufacture	
D → Dec.			
19 Characters :	08 05 0013199 900640031		
Year of manufacture		Product reference	
Month of manufacture		Sequential number	
20 Characters :	3675007 XX 2 07 070 00315		
Product reference		Sequential number	
Millenium of manufacture		Manufacturing day	
		Year of manufacture	
21 Characters :	3675007 XX 07 070 0000315		
Product reference		Sequential number	
Year of manufacture		Manufacturing day	