



ARISTON

SPARE PARTS EXPLODED VIEW GAS-WALL CONDENSING BOILERS

Model

ACO

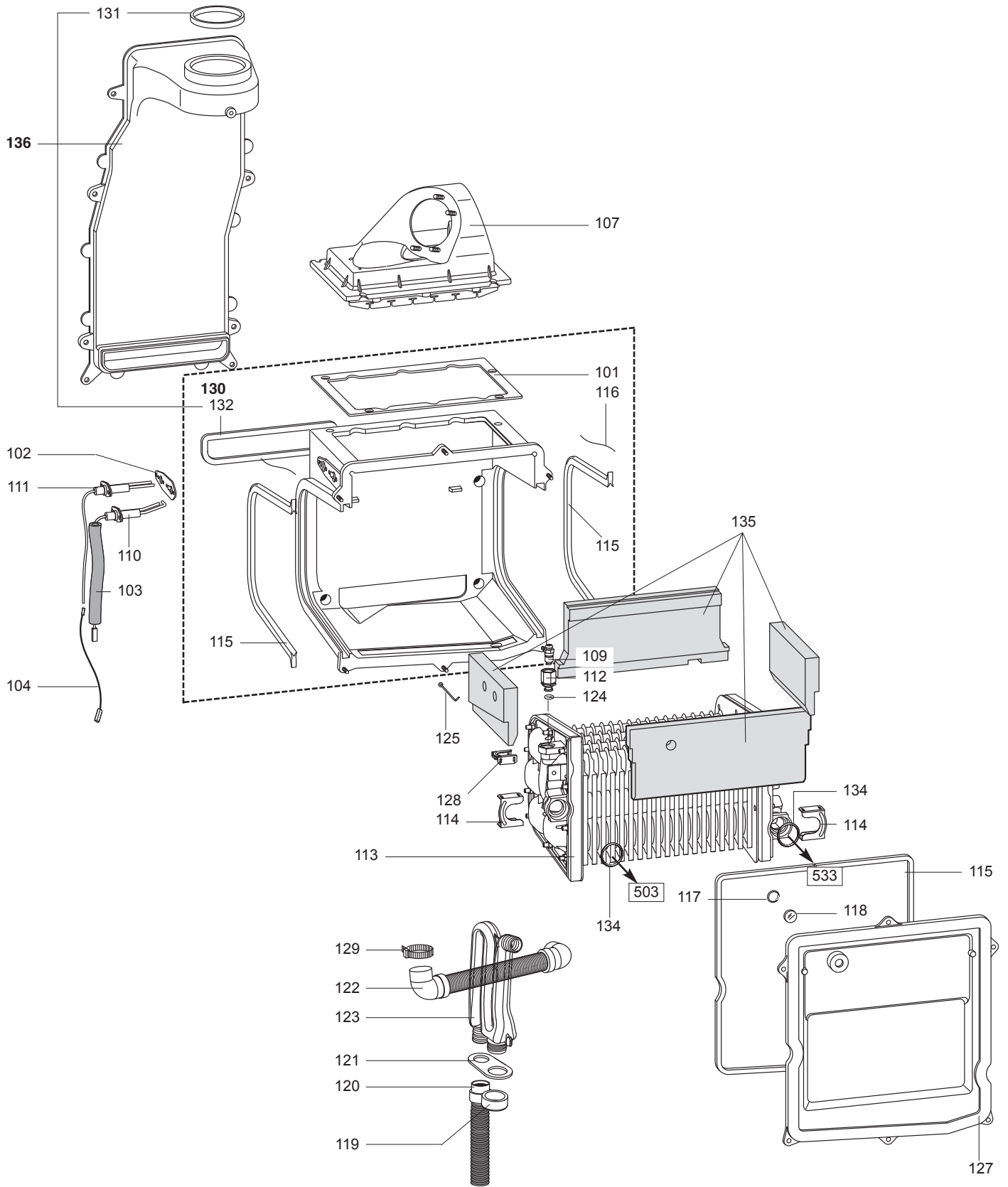
R8215219-08 - 06/02/2014

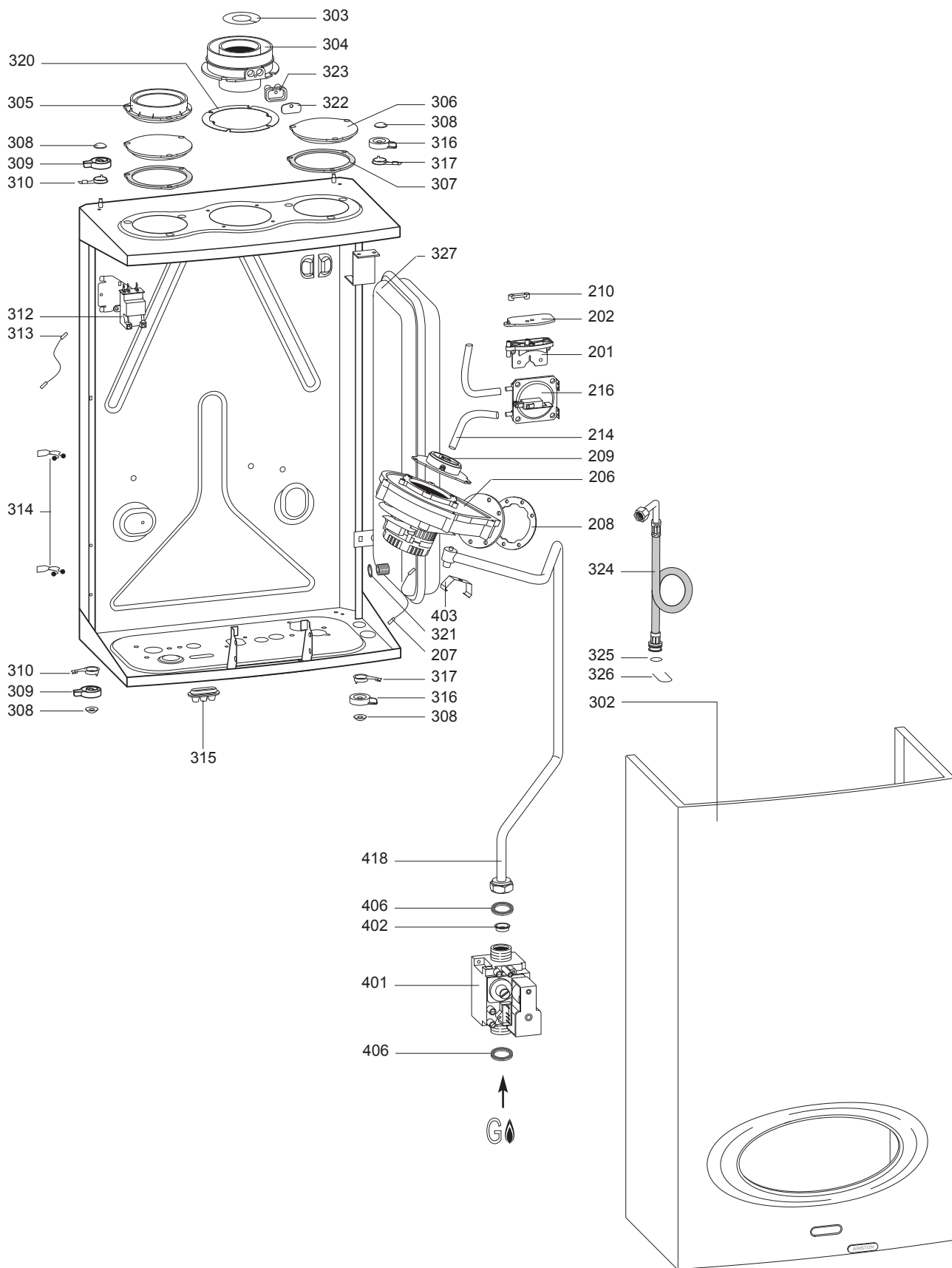
ACO

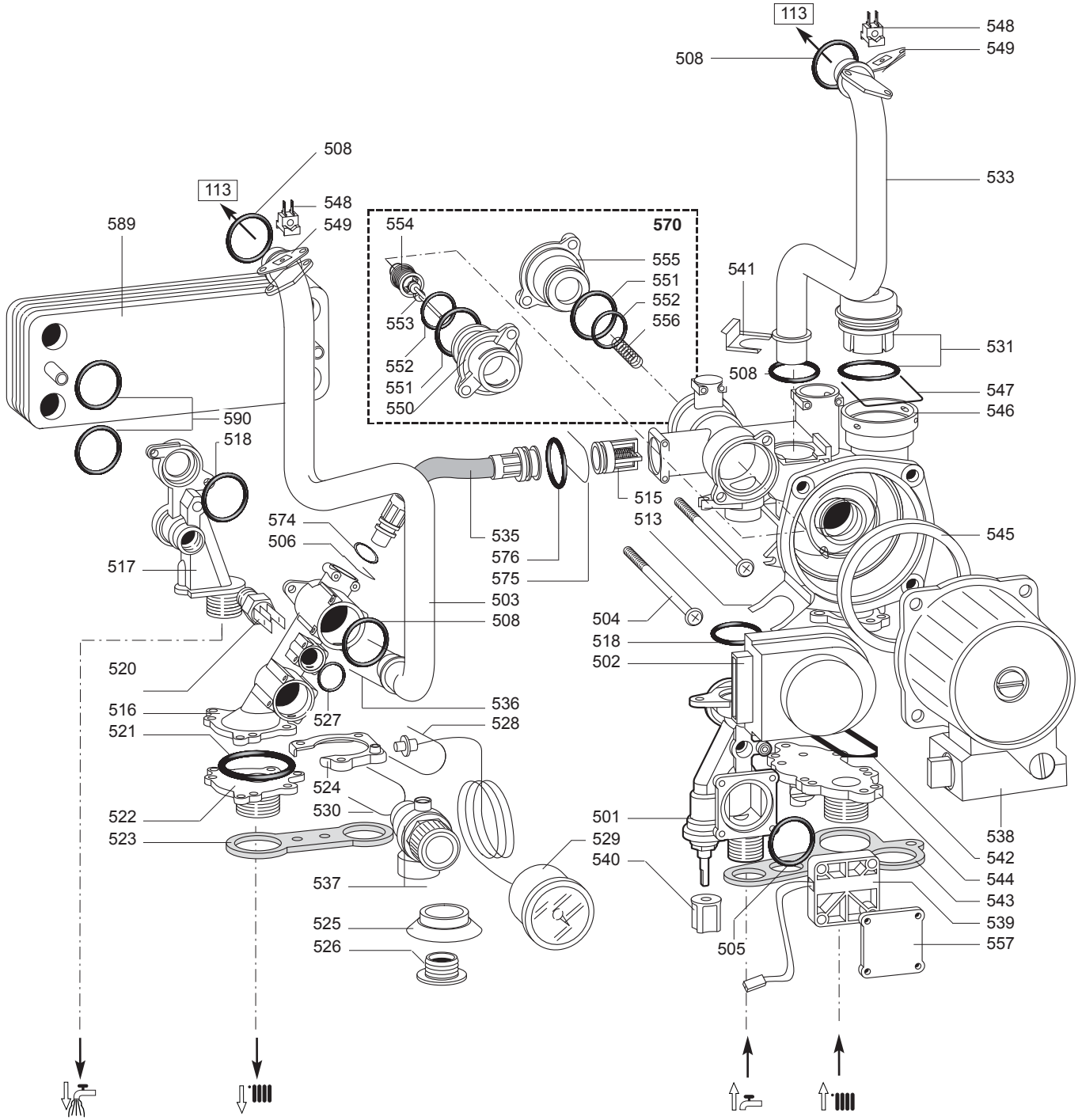
Gas-wall condensing boilers

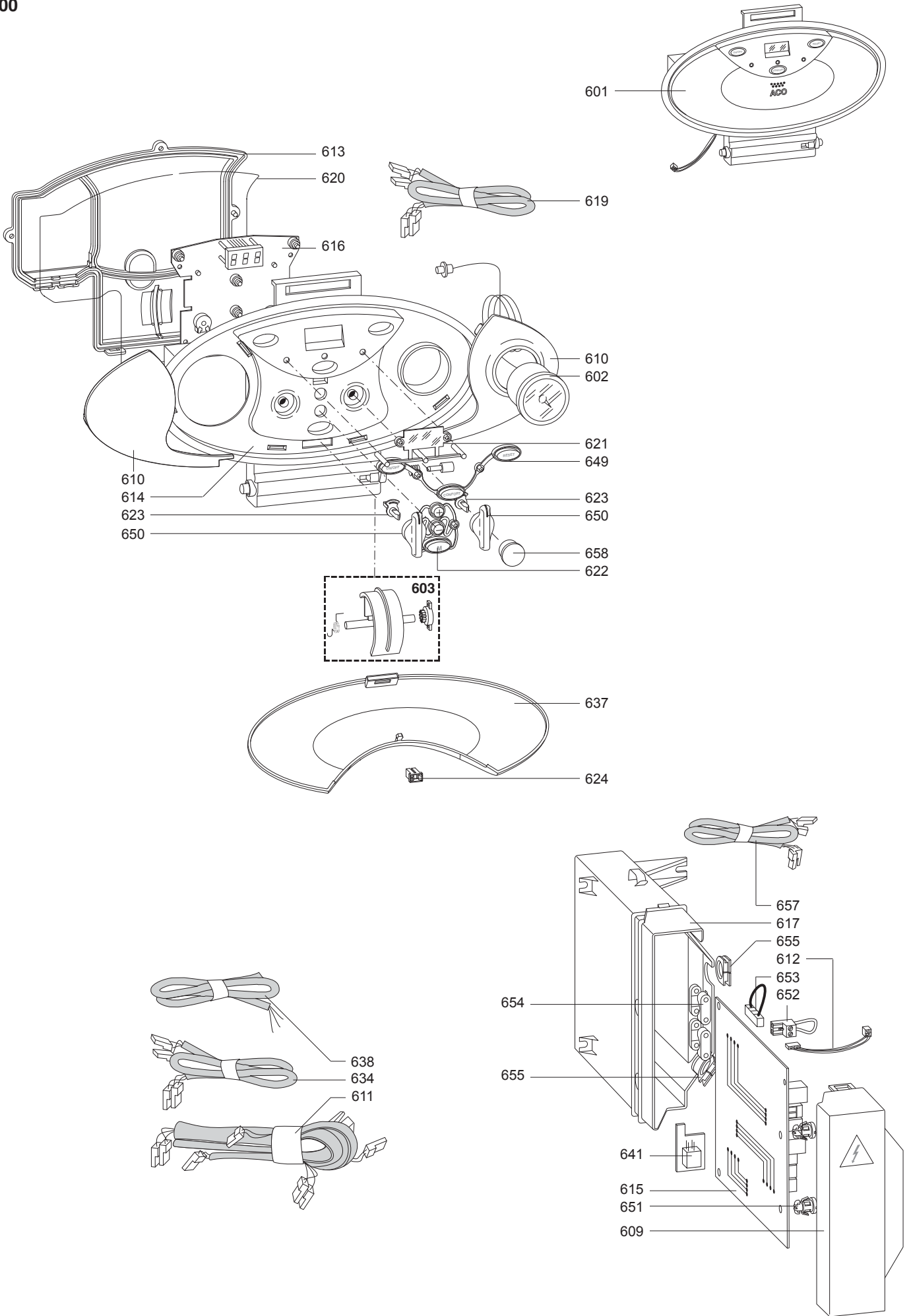
1	537064	ACO 27 MFFI met (IT SP PT)	09-2002	12-2007
1	537065	ACO 27 MFFI gpl IT	09-2002	12-2007
2	537066	ACO 27 RFFI met (IT SP PT)	09-2002	12-2007
2	537067	ACO 27 RFFI gpl IT	09-2002	12-2007
3	3300000	ACO 32 MFFI met (IT SP PT)	04-2004	07-2007
3	3300001	ACO 32 MFFI gpl (IT SP PT)	04-2004	07-2007
4	3300002	ACO 32 RFFI met (IT SP PT)	04-2004	07-2007
4	3300003	ACO 32 RFFI gpl (IT SP PT)	04-2004	07-2007

Col	Reference	Model type	Begin	End
-----	-----------	------------	-------	-----

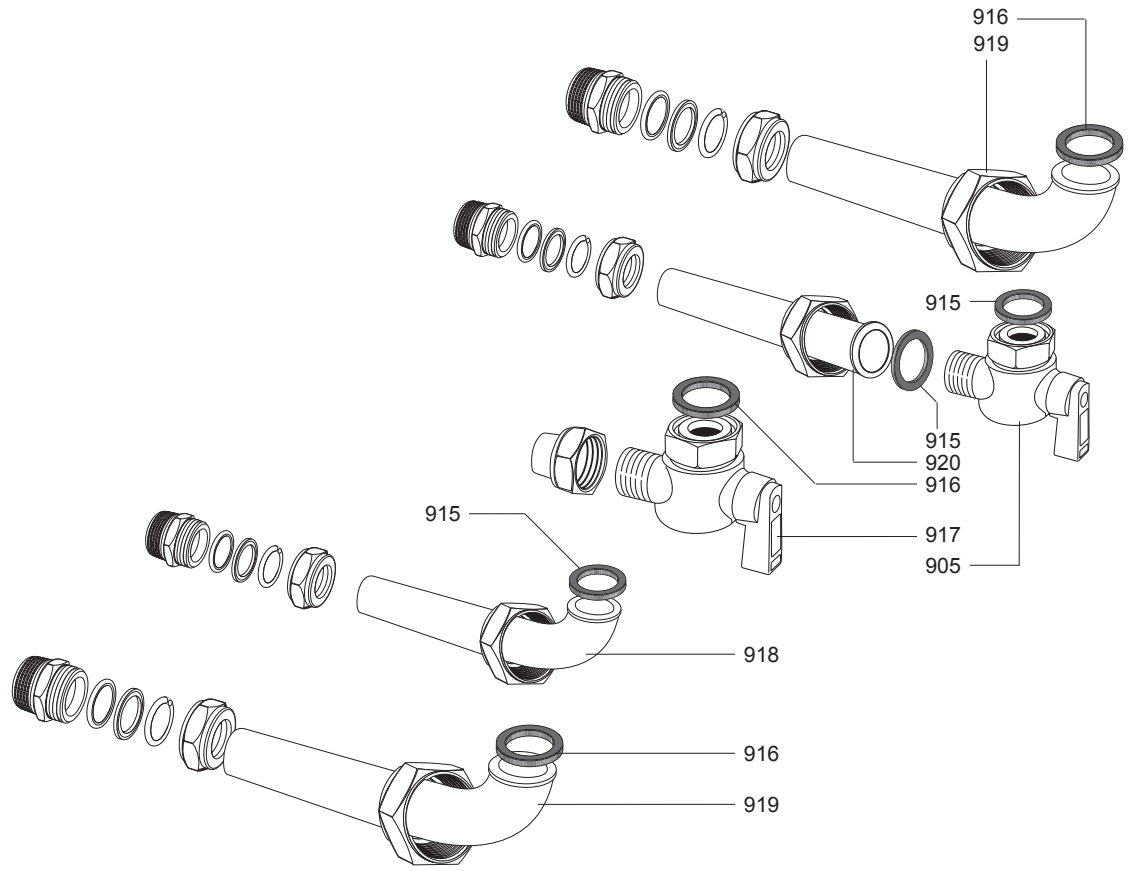








Description	Manf. Pt. N	Type	ACO 21 MFF / ACO 21 RFF / ACO 32 MFF / ACO 32 RFF																	
			1	2	3	4	5	6	7	8	9	10	11	12	13	14	15	16	17	18
0600 ELECTRICAL BOX																				
0601 CONTROL PANEL	65102895		•		•															
CONTROL PANEL (COMPLETE)	65102898			•		•														
0602 PRESSURE GAUGE	65102220		•	•	•	•														
0603 COMPLETE HINGE	65103578		•	•	•	•														
0609 ELECTRIC BOX COVER	65102195		•	•	•	•														
0610 TRIM	65102894		•	•	•	•														
0611 HIGH VOLTAGE WIRING	65102897		•		•															
HIGH VOLTAGE WIRING	65102901			•		•														
0612 WIRING (INTERFACE - MAIN P.C.B.)	65102184		•	•	•	•														
0613 REAR CLAMP	65102194		•	•	•	•														
0614 CONTROL PANEL	65102209		•		•															
CONTROL PANEL	65102303			•		•														
0615 P.C.B. VER.06 (ACO-MCU)	65103508		•	•	•	•														
0616 P. C. B. (DISPLAY)	65102235		•	•	•	•														
0617 P.C.B. COVER PLATE	65102234		•	•	•	•														
0619 WIRING (INTERFACE - DISPLAY P.C.B.)	65102185		•	•	•	•														
0620 GASKET	65102265		•	•	•	•														
0621 DISPLAY GLASS	65102249		•	•	•	•														
0622 PUSH BUTTON GROUP (MENU)	65102213		•	•	•	•														
0623 SPINDLE (KNOB)	65100755		•	•	•	•														
0624 PUSH (CASE DOOR)	65100676		•	•	•	•														
0634 LOW VOLTAGE WIRING	65102183		•		•															
LOW VOLTAGE WIRING	65102307			•		•														
0637 CASE DOOR	65102208		•	•	•	•														
0638 CABLE (POWER SUPPLY)	65102187		•	•	•	•														
0641 MODULE KIT (EEPROM ACO)	65103509		•	•	•	•														
0649 PUSH BUTTON GROUP (MENU)	65102211		•	•	•	•														
0650 KNOB	65102222		•	•	•	•														
0651 CLIPS	990357		•	•	•	•														
0652 CONNECTOR (ROOM THERMOSTAT)	990381		•	•	•	•														
0653 CONNECTOR	65102254		•	•	•	•														
0654 CABLE CLAMP	571562		•	•	•	•														
0655 CABLE HOLDER	65100754		•	•	•	•														
0657 CABLE (FAN)	65102186		•	•	•	•														
0658 KNOB COVER	65102302			•		•														



LIST OF THE ABBREVIATIONS

HW	: Hot water.
CW	: Cold water.
C	: Ceramic resistance (normal heating).
Ca	: Ceramic resistance (accelerated heating)
TP	: Immersion heater.
1F	: With fittings.
2F	: Without fittings.
3F	: With fittings and another outlet connection.
AMI	: With mixing valve.
SMI	: Without mixing valve.
PUISS	: Power of th appliance.
PN	: Appliance with normal pression.
LP	: Appliance with low pression.
PV	: Appliance with variable power.
PF	: Appliance with fixed power.

IDENTIFICATION PLATE

SERIAL NUMBER

10 Characters :	04 05 125 011	Sequential number Manufacturing day Year of manufacture
11 Characters :	1 95 065004 - 31	Technical number of the appliance Sequential number Year of manufacture
Month of manufacture : from 1 to 9 → Jan. to Sep., O → Oct., N → Nov., D → Dec.		
19 Characters :	08 05 0013199 900640031	Product reference Sequential number
Year of manufacture Month of manufacture		
20 Characters :	3675007 XX 2 07 070 00315	Sequential number Manufacturing day Year of manufacture
Product reference Millenium of manufacture		
21 Characters :	3675007 XX 07 070 0000315	Sequential number Manufacturing day
Product reference Year of manufacture		